



LEGEND



PAVEMENT PATCHING



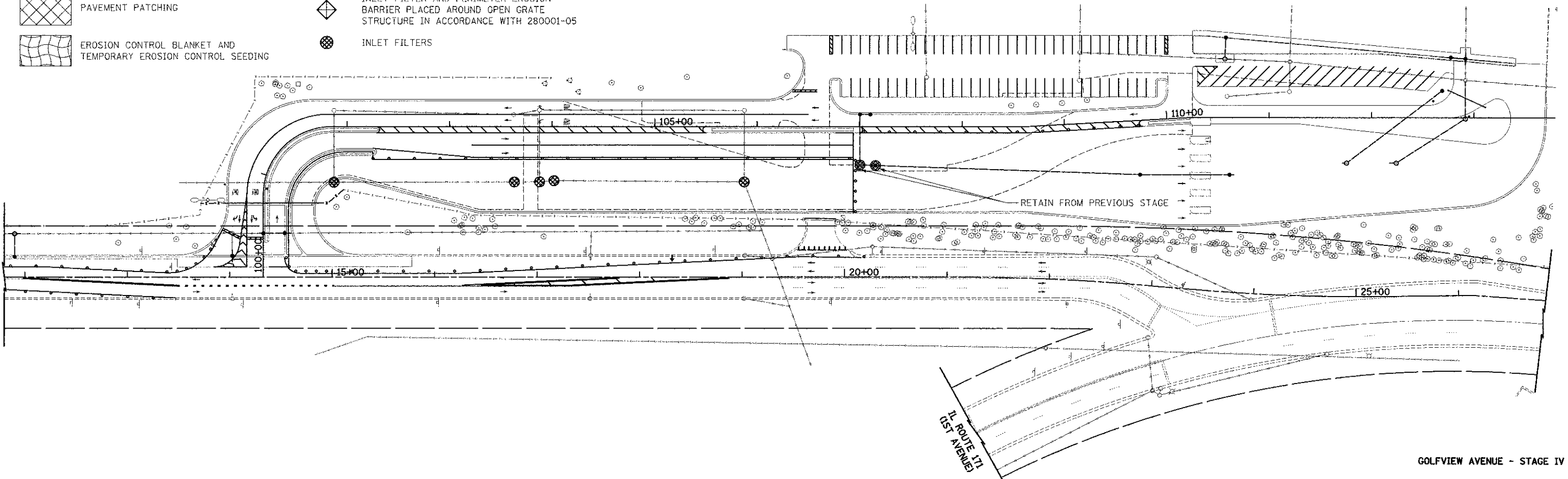
EROSION CONTROL BLANKET AND
TEMPORARY EROSION CONTROL SEEDING



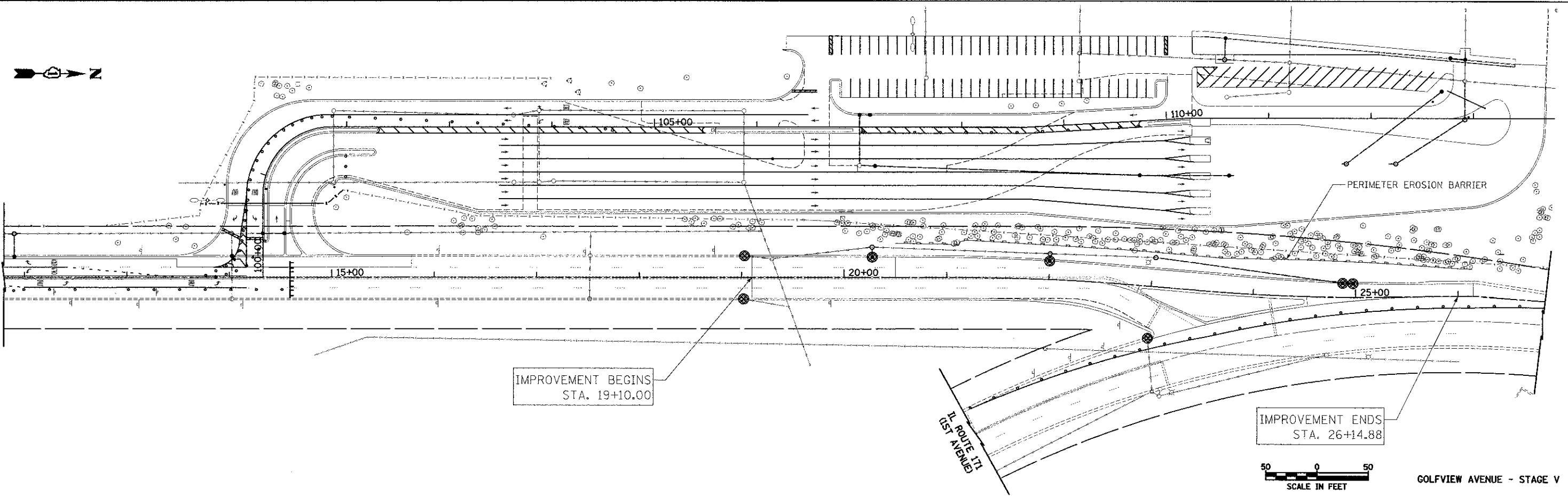
INLET FILTER AND PERIMETER EROSION
BARRIER PLACED AROUND OPEN GRATE
STRUCTURE IN ACCORDANCE WITH 280001-05



INLET FILTERS



GOLFVIEW AVENUE - STAGE IV



GOLFVIEW AVENUE - STAGE V



FILE NAME =	USER NAME = dte
... \2563_ERC_03.dgn	

DESIGNED - DTE	REVISED -
DRAWN - DTE	REVISED -
CHECKED - GAB	REVISED -
DATE - 10/22/2012	REVISED -

DESIGNED - DTE	REVISED -
DRAWN - DTE	REVISED -
CHECKED - GAB	REVISED -
DATE - 10/22/2012	REVISED -

STATE OF ILLINOIS
DEPARTMENT OF TRANSPORTATION

EROSION AND SEDIMENT CONTROL - STAGE IV & V

SCALE: 1" = 50' SHEET NO. 3 OF 3 SHEETS STA. 11+80.00 TO STA. 26+14.88

F.A.U. RTE.	SECTION	COUNTY	TOTAL SHEETS	SHEET NO.
3784	12-F3000-23-PK	COOK	133	50
FED. ROAD DIST. NO. 1 ILLINOIS			CONTRACT NO. 63764	
FED. AID PROJECT				