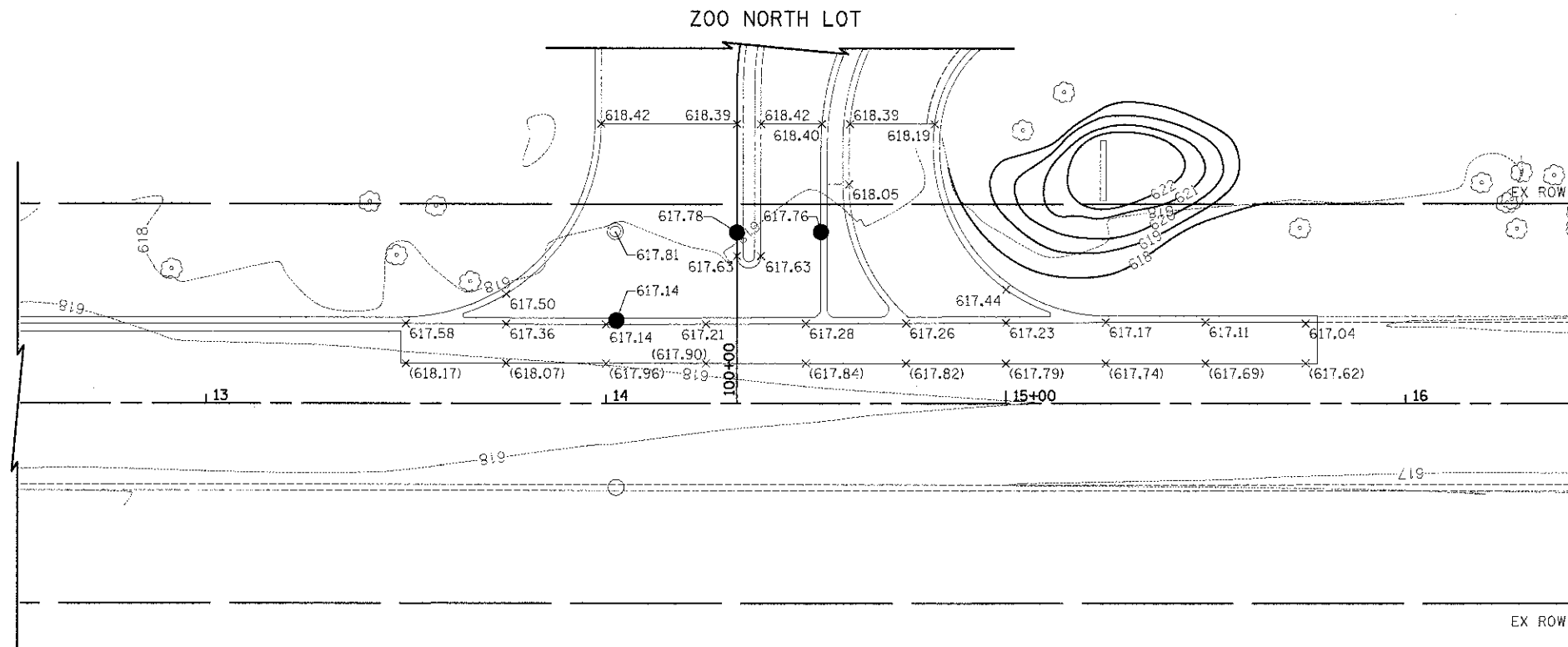


**LEGEND**

(XXX.XX) EXISTING PAVEMENT ELEVATION

XXX.XX PROPOSED PAVEMENT ELEVATION

IN THE RESURFACING AREA, ALL EXISTING ELEVATIONS WILL ALSO BE THE FINAL PROPOSED SURFACE ELEVATION.



GOLFVIEW AVENUE



FILE NAME = ...\\12-Grading\2563.INT_02.dgn	USER NAME = cta	DESIGNED DTE DRAWN DTE	REVISIONS REVISED - REVISED - REVISED - REVISED -	<b>STATE OF ILLINOIS DEPARTMENT OF TRANSPORTATION</b>	<b>INTERSECTION DETAILS</b>			F.A.L. RTE. 3784	SECTION 12-F3000-23-PK	COUNTY COOK	TOTAL SHEETS 133	SHEET NO. 61
PLOT SCALE = 20,000 1" = 20'					CHECKED GAB	SCALE: 1" = 20'	SHEET NO. 2 OF 3 SHEETS	STA.	TO STA.	CONTRACT NO. 63764		
PLOT DATE = 11/9/2012					DATE = 10/22/2012	FED. ROAD DIST. NO. 1 (ILLINOIS) FED. AID PROJECT						