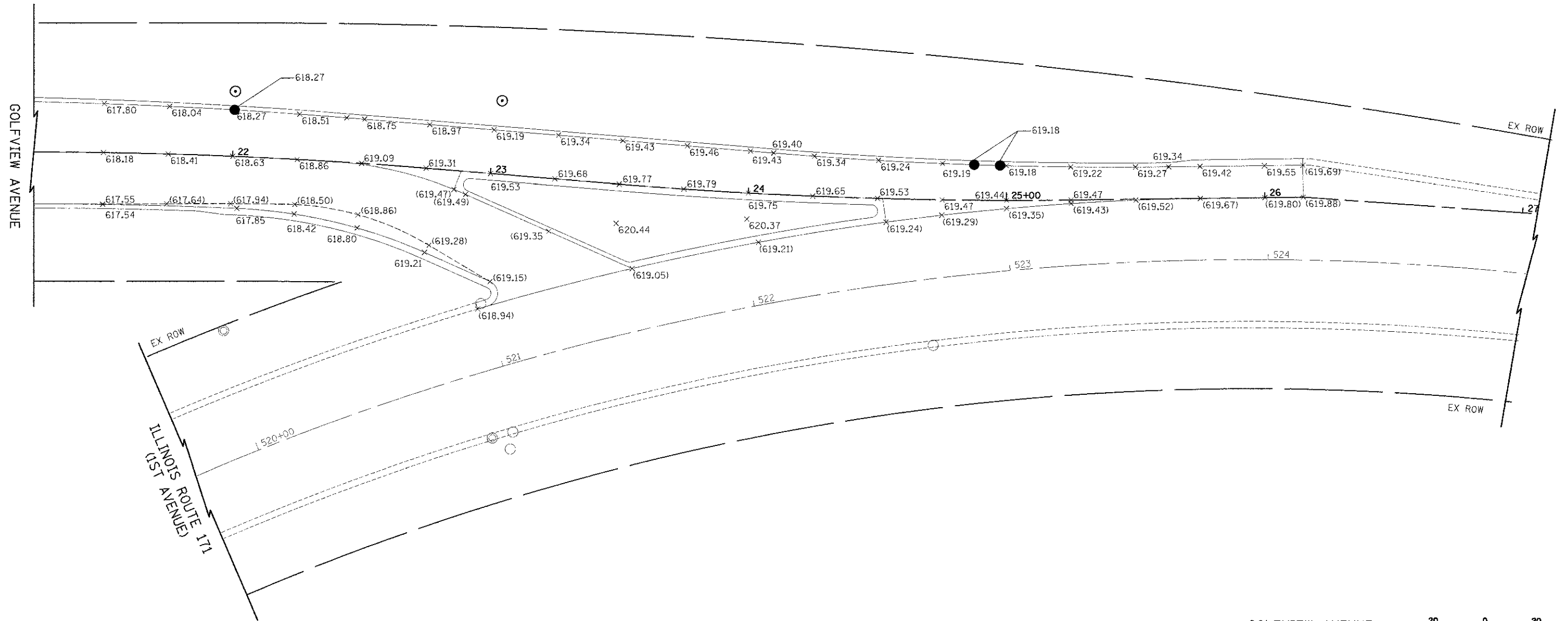


**LEGEND**

(XXX.XX) EXISTING PAVEMENT ELEVATION  
 XXX.XX PROPOSED PAVEMENT ELEVATION  
 IN THE RESURFACING AREA, ALL EXISTING ELEVATIONS WILL ALSO BE THE FINAL PROPOSED SURFACE ELEVATION.



GOLFVIEW AVENUE  
 ILLINOIS ROUTE 171



FILE NAME = ...N12-Grading\2553_INT_03.dgn	USER NAME = dte	DESIGNED DTE	REVISED -	<b>STATE OF ILLINOIS DEPARTMENT OF TRANSPORTATION</b>	<b>INTERSECTION DETAILS</b>			F.A.U. RTE. 3784	SECTION 12-F3000-23-PK	COUNTY COOK	TOTAL SHEETS 133	SHEET NO. 62
	PLOT SCALE = 20.0000' / 1" =	DRAWN DTE	REVISED -		SCALE: 1" = 20'	SHEET NO. 3 OF 3	SHEETS	STA.	TO STA.	CONTRACT NO. 63764		
	PLOT DATE = 11/20/2012	CHECKED GAB	REVISED -		FED. ROAD DIST. NO. 1 ILLINOIS FED. AID PROJECT							
		DATE = 10/22/2012	REVISED -									