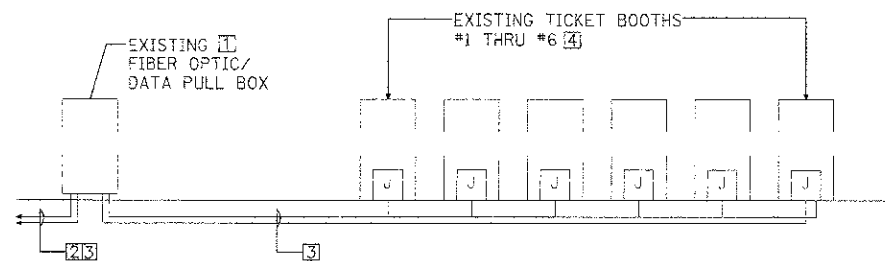


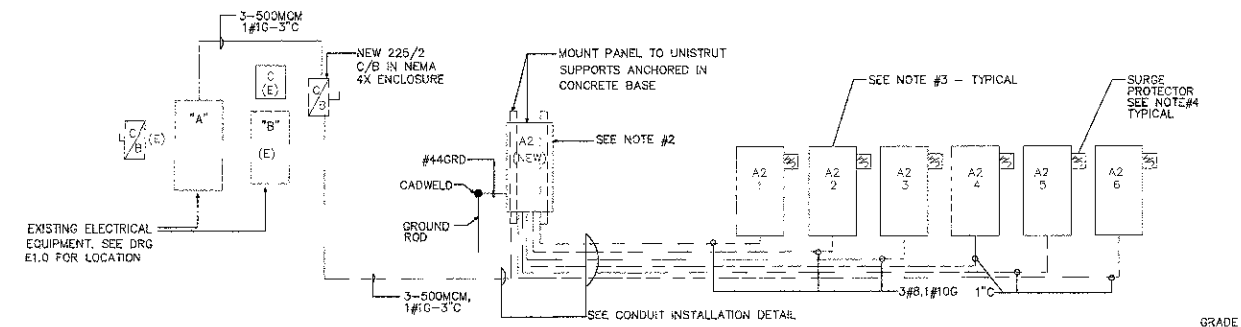
① ELECTRICAL DEMOLITION DIAGRAM

- ① EXISTING 400A 120/240V1Ø3W METER & SERVICE DROP TO REMAIN
- ② EXISTING PULL/SPLICE BOX TO REMAIN
- ③ EXISTING 225A 120/240V1Ø3W PANEL TO REMAIN. SEE PANEL "A" SCHEDULE
- ④ EXISTING 200A 120/240V1Ø3W PANEL TO REMAIN. SEE PANEL "B" SCHEDULE.
- ⑤ EXISTING 200A 240V1Ø PANEL "B" CONTACTOR TO REMAIN.
- ⑥ EXISTING CONDUIT & WIRE TO REMAIN
- ⑦ DISCONNECT EXISTING TICKET BOOTH FROM SOURCE TO FACILITATE REMOVAL OF TICKET BOOTH BY OTHERS
- ⑧ DISCONNECT & REMOVE WIRE FROM CONDUIT COMPLETELY, & REMOVE CONDUIT FROM PANEL. VERIFY EXACT NUMBER OF CONDUITS SERVING EXISTING TICKET BOOTHS, PRIOR TO PERFORMING ANY WORK.
- ⑨ EXISTING SUBFEED BREAKER TO REMAIN.



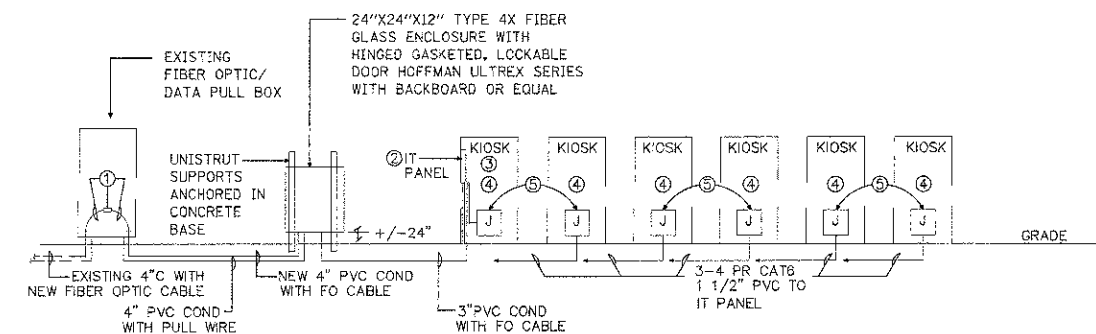
② EXISTING TICKET BOOTH SERVICE DIAGRAM

- ① EXISTING PULL BOX TO REMAIN
- ② EXISTING 2-4" SERVICE COND TO REMAIN
- ③ COORDINATE REMOVAL OF EXISTING FIBER/OPTIC/DATA FROM EXISTING CONDUIT WITH CHICAGO ZOOLOGICAL SOCIETY INFORMATION SERVICES, AT BROOKFIELD ZOO.
- ④ DISCONNECT ALL LOW VOLTAGE CABLES, ie, DATA, PHONE, CCTV, ETC. FROM WITHIN EXISTING TICKET BOOTHS TO FACILITATE TICKET BOOTH REMOVAL BY OTHERS.



③ NEW BOOTH ELECTRIC SERVICE DIAGRAM

1. FURNISH & INSTALL GROUND BUSHINGS & BOND METAL ENCLOSURES
2. PANEL "A2" SHALL BE NEMA 4X ENCLOSURE WITH HINGED & GASKETED DOOR & 3 POINT LATCH WITH LOCK
3. FURNISHED & PREWIRED WITH KIOSK
4. EC SHALL F & I SURGE PROTECTOR, SURGE PROTECTOR SHALL BE EQUAL TO : MCG SURGE PROTECTION : MODEL PT80-120T : 120/240V 1Ø 3W+G



④ NEW BOOTH FIBER OPTIC/LOW VOLTAGE DISTRIBUTION DIAGRAM

1. FURNISH AND INSTALL NEW 12 STRAND, SINGLE MODE OUTDOOR RATED FIBER OPTIC CABLE FROM DISCOVERY BUILDING DISTRIBUTION SWITCH AND EXTEND TO NEW DATA PULL / SPLICE CABINET SYSTEMAX AND INTO NEW IT PANEL IN FIRST KIOSK SYSTEMAX COMMSCOPE OR EQUAL
2. NEW NETWORK HARDWARE CABINET 36"H x 26"W x 12"D CABINET SHALL BE EQUAL TO: CHATSWORTH PRODUCTS, INC CABINET # 13050-723 PATCH PANEL MGMT BAR # 12176-701 FIBER SLACK MGR PANEL # 12955-719 DUPLEX RECEPTABLE # 12934-001
3. COPPER DATA CABLE SHALL BE 4PAIR CAT6, OUTDOOR RATED. SYSTEMAX / COMMSCOPE OR EQUAL
4. EACH KIOSK SHALL BE HARDWIRED WITH CAT 6 CABLE FOR 3 DATA TELEPHONE, POS REGISTER, CCTV CAMERA. SEE ARCH DRG FOR EXACT LOCATION. EACH CAT6 DATA CABLE SHALL BE SURGE PROTECTED WITH SOLID STATE BUILDING ENTRANCE PROTECTORS. SURGE PROTECTORS SHALL BE EQUAL TO ITW LINX SURGE GATE IGB CAT6-75
5. COORDINATE EXACT STUB UP LOCATION WITH KIOSK INSTALLER & GEN CONTRACTOR PRIOR TO ROUGH-IN.
6. FIBER OPTIC CABLE SPLICING SHALL BE PERFORMED BY A QUALIFIED TECHNICIAN WITH MINIMUM OF 5 YEARS OF FIBER OPTIC CABLE SPLICING EXPERIENCE.
7. NEW NETWORK SWITCH HARDWARE MODEL CISCO WS-C3560G-48-PS-S TO ACCOMMODATE TOTAL NUMBER OF NETWORK CONNECTIONS IN KIOSKS AND CANOPY CONNECTION FOR CAMERAS AND WIRELESS ACCESS POINTS.

|   |                   |                         |   |   |   |                |         |        |              |           |
|---|-------------------|-------------------------|---|---|---|----------------|---------|--------|--------------|-----------|
| FILE NAME = ...\\server\Lighting\2583.E.2.0.dgn | USER NAME = dte   | DESIGNED - WK           | REVISED -                                       | <b>STATE OF ILLINOIS<br/>DEPARTMENT OF TRANSPORTATION</b> | <b>ELECTRICAL DIAGRAMS &amp; SCHEDULES E2.0</b> | F.A. RTE.      | SECTION | COUNTY | TOTAL SHEETS | SHEET NO. |
| PL-OT SCALE = 1:0200' / 1"                      | DRAWN - FI        | REVISED -               | 3784  |   |   | 12-F3000-23-PK | COOK    | 133    | 102          |           |
| PL-OT DATE = 11/9/2012                          | CHECKED - VI      | REVISED -               | <b>CONTRACT NO. 63764</b>                       |   |   |                |         |        |              |           |
|   | DATE - 10/22/2012 | REVISED -               | FED. ROAD DIST. NO. [ILLINOIS] FED. AID PROJECT |   |   |                |         |        |              |           |
| SCALE: NONE                                     |                   | SHEET NO. 1 OF 1 SHEETS |   | STA. TO STA.  |   |                |         |        |              |           |