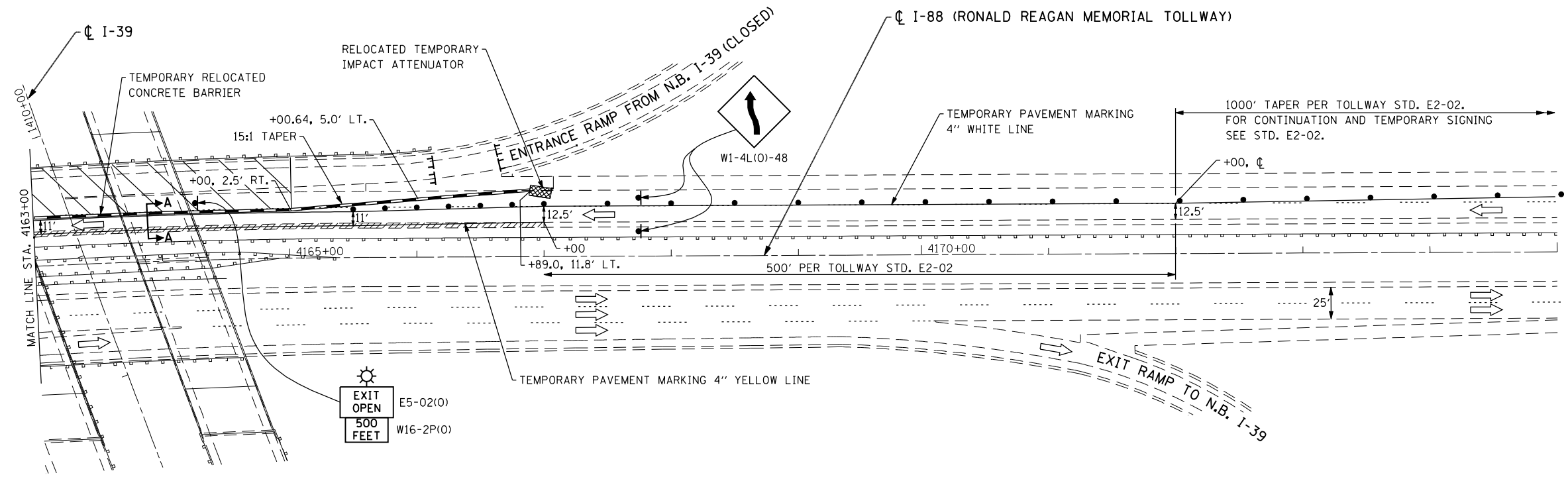
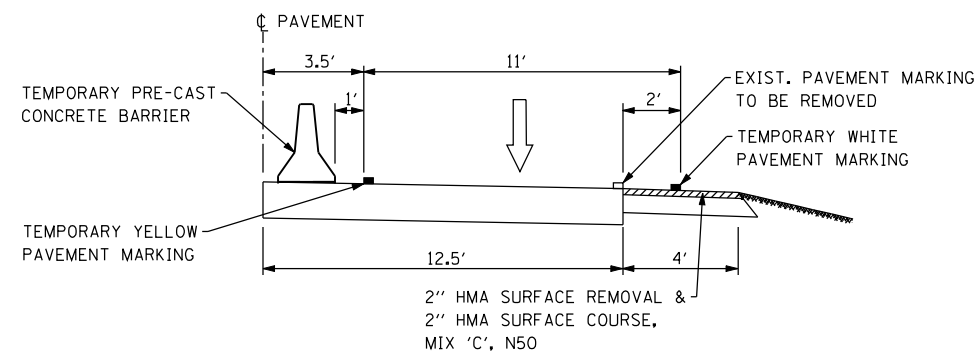
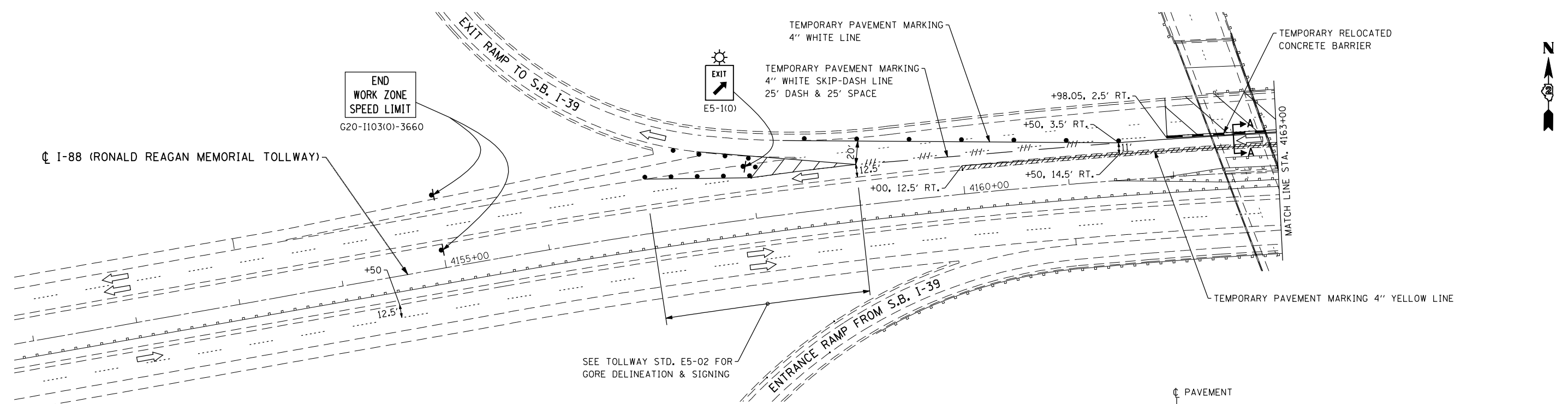


DATE	
BY	
SURVEYED	
PLOTTED	
TEMPLATE	
NO. BOOK	
AREAS CHECKED	
NO.	

DATE	
BY	
SURVEYED	
PLOTTED	
TEMPLATE	
NO. BOOK	
AREAS CHECKED	
NO.	



**LEGEND**

	PROPOSED HMA SURFACE REMOVAL, 2" HMA SURFACE COURSE, MIX 'C', N50, 2"
	TEMPORARY CONCRETE BARRIER
	IMPACT ATTENUATOR, TEMPORARY (NON-REDIRECTIVE) TEST LEVEL 3
	TRAFFIC FLOW ARROW
	WORK ZONE
	DRUMS SPACED AT INTERVALS AS NOTED
	PAVEMENT MARKING REMOVAL
	TEMPORARY SIGN WITH MESSAGE

FILE NAME = sht-stage4\_01 I-88.dgn  
 PLOT DATE = 9/6/2012  
 PLOT SCALE = 100.0000' / IN.

**CHRISTIAN-ROGE & ASSOCIATES, INC.**  
 ENGINEERS-PLANNERS-SURVEYORS  
 211 WEST WACKER DRIVE  
 CHICAGO, ILLINOIS 60606  
 PHONE: (312)372-2023 FAX: (312)372-8274

DESIGNED - E.M.	REVISED -
DRAWN - B.K.	REVISED -
CHECKED - G.F.L.	REVISED -
DATE - JULY 2012	REVISED -

**STATE OF ILLINOIS**  
**DEPARTMENT OF TRANSPORTATION**

**TRAFFIC CONTROL AND PROTECTION**  
**I-88 UNDER I-39**  
**STAGE IV**

SCALE: SHEET NO. OF SHEETS STA. TO STA.

F.A.I. RTE.	SECTION	COUNTY	TOTAL SHEETS	SHEET NO.
39	D2 BRIDGE PAINTING 2013-2	OGLE	26	13
				CONTRACT NO. 64J27
FED. ROAD DIST. NO. 1 ILLINOIS FED. AID PROJECT				