

F.A.P. RTE.	SECTION	COUNTY	TOTAL SHEETS	SHEET NO.
311	(1-1)R	KENDALL	514	1

FOR INDEX OF SHEETS, SEE SHEET NO. 2
 SUBSURFACE UTILITY ENGINEERING UTILIZED ON THIS PROJECT

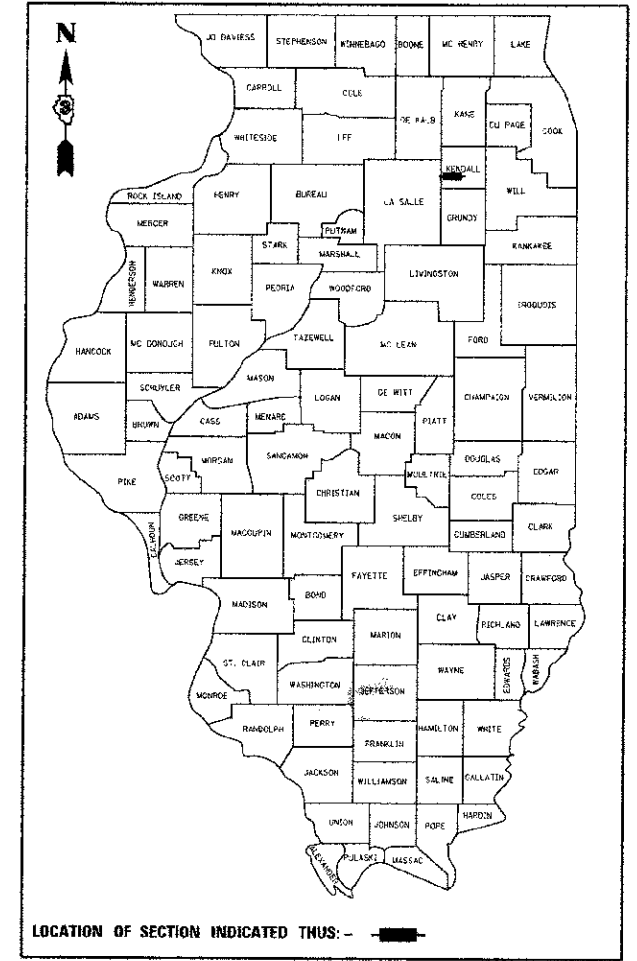
STATE OF ILLINOIS
 DEPARTMENT OF TRANSPORTATION
 DIVISION OF HIGHWAYS

**PROPOSED
 HIGHWAY PLANS**

FAP ROUTE 311 (IL 71)
 SECTION (1-1)R
 PROJECT: ACF-0311(046)
 KENDALL COUNTY

C - 93 - 022 - 04
 RECONSTRUCTION OF IL 71 FROM MINKLER/
 ORCHARD ROAD TO U.S. 34 IN OSWEGO

P-93-048-01
 D-93-021-04



LOCATION OF SECTION INDICATED THUS: **FUNCTIONAL CLASSIFICATION: OTHER PRINCIPAL ARTERIAL**

2011 ADT = 16300
 MU = 6.0%
 SU = 6.0%

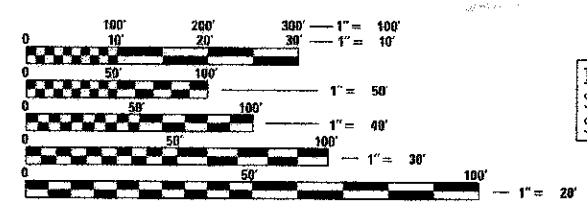
STATE OF ILLINOIS
 DEPARTMENT OF TRANSPORTATION
 DIVISION OF HIGHWAYS

SUBMITTED October 11 2012
Eric S. Threlkeld
 DEPUTY DIRECTOR OF HIGHWAYS, REGION ENGINEER

December 7 2012
John D. Baranowski, PE, Jr.
 acting ENGINEER OF DESIGN AND ENVIRONMENT

December 7 2012
William R. Frey, Jr.
 acting DIRECTOR OF HIGHWAYS, CHIEF ENGINEER

**PRINTED BY THE AUTHORITY
 OF THE STATE OF ILLINOIS**



FULL SIZE PLANS HAVE BEEN PREPARED USING STANDARD ENGINEERING SCALES. REDUCED SIZED PLANS WILL NOT CONFORM TO STANDARD SCALES. IN MAKING MEASUREMENTS ON REDUCED PLANS, THE ABOVE SCALES MAY BE USED.

MICROFILMED _____
 REEL NUMBER _____
 AWARDED _____
 RESIDENT ENGINEER _____
 AS BUILT CHANGES WERE MADE ON THE FOLLOWING SHEETS _____

J.U.L.I.E.
 JOINT UTILITY LOCATION INFORMATION FOR EXCAVATION
 1-800-892-0123

DISTRICT 3 NO. (815) 434-6131
 PROJECT ENGINEER: CRAIG REED, P.E.
 UNIT CHIEF: BRAD DUNCAN, P.E.
 TOWNSHIP: OSWEGO

CONTRACT NO: 66420

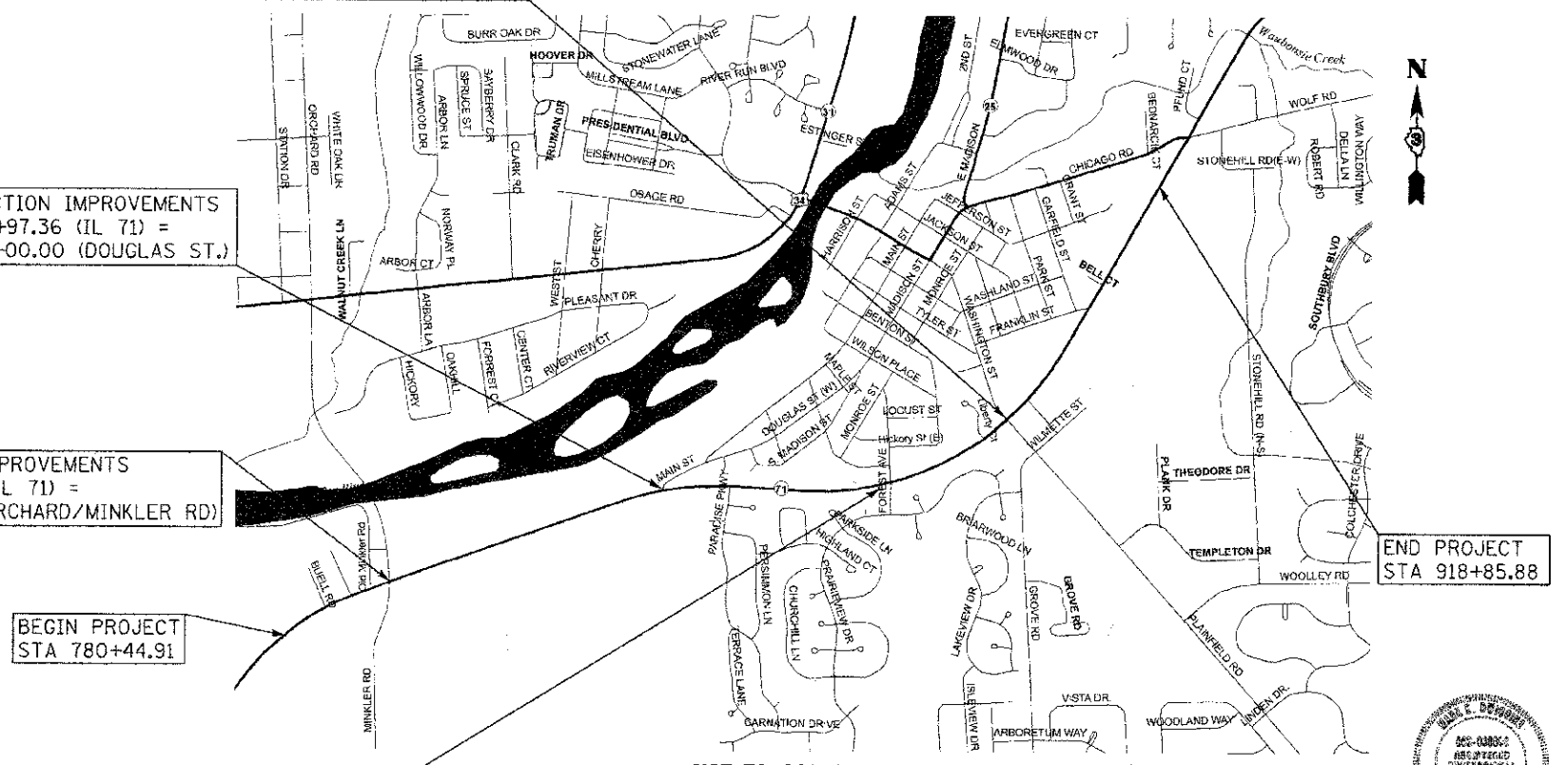
INTERSECTION IMPROVEMENTS
 STA 880+24.08 (IL 71) =
 STA 200+00.00 (WASHINGTON/PLAINFIELD RD.)

INTERSECTION IMPROVEMENTS
 STA 837+97.36 (IL 71) =
 STA 100+00.00 (DOUGLAS ST.)

INTERSECTION IMPROVEMENTS
 STA 798+20.85 (IL 71) =
 STA 62+59.67 (ORCHARD/MINKLER RD)

BEGIN PROJECT
 STA 780+44.91

INTERSECTION IMPROVEMENTS
 STA 863+44.48 (IL 71) =
 STA 50+00.00 (FOREST AVE.)



NOT TO SCALE

GROSS LENGTH = 13841 FT. = 2.62 MI.
 NET LENGTH = 13841 FT. = 2.62 MI.

July 18 2012
Mark E. Swiggins
 THE UPCHURCH GROUP, INC.

TUG PROJ. # 3105014
 PLOT DATE 7/18/2012
 FILE NAME PACIV11A.IDOT_DIST3\Oswego\Phase 1\cvrshr.dgn