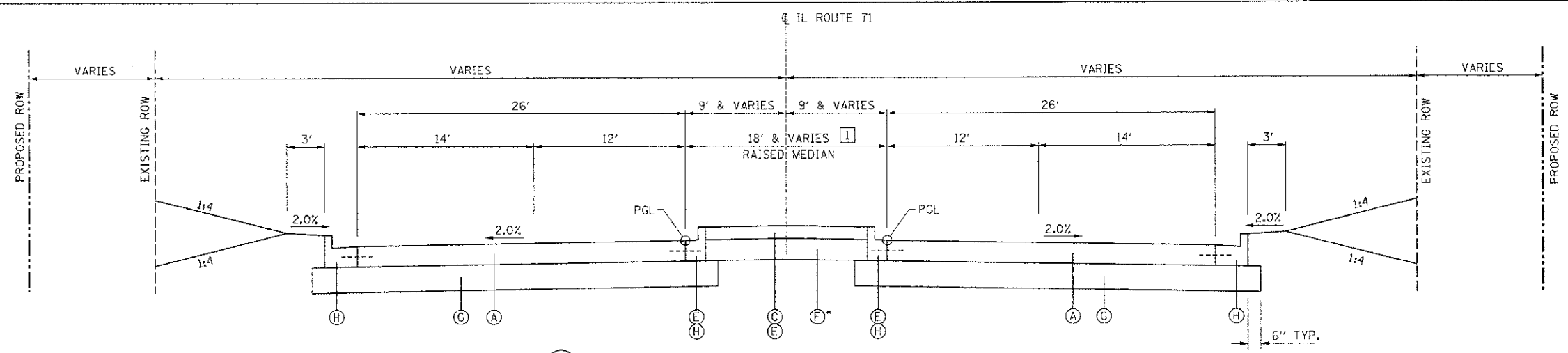


F.A.P. RTE.	SECTION	COUNTY	TOTAL SHEETS	SHEET NO.
311	(I-17R)	KENDALL	514	23
STA.		TO STA.		
FED. ROAD DIST. NO.		ILLINOIS FED. AID PROJECT		



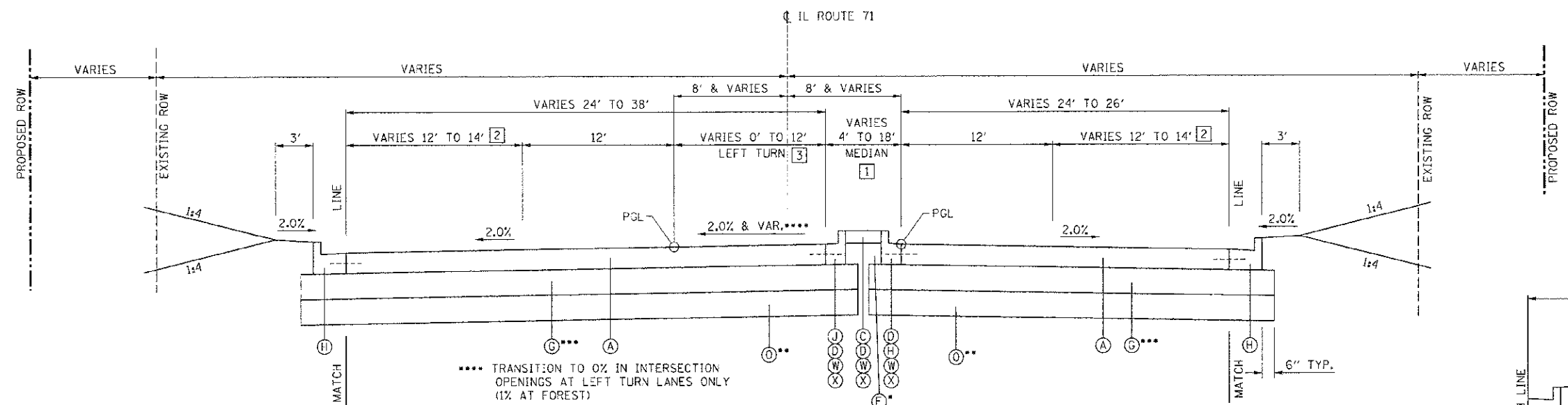
5 PROPOSED TYPICAL SECTION - IL ROUTE 71

STA 805+25.34 TO STA 813+00.00
 STA. 818+63.33 TO STA. 822+37.00
 LOOKING EAST

- 1 STA. 805+25.34 TO STA. 806+90.34 = TRANSITION FROM 25.33' TO 18.00' (RAISED MEDIAN)
- STA. 806+90.34 TO STA. 812+50.06 = 18.00' (RAISED MEDIAN)
- STA. 812+50.06 TO STA. 813+00.00 = 18.00' (SIDEROAD OPENING)
- STA. 818+63.33 TO STA. 821+05.00 = 18.00' (RAISED MEDIAN)
- STA. 821+05.00 TO STA. 821+15.00 = TRANSITION FROM RAISED MEDIAN TO CORRUGATED MEDIAN (18.00' TO 17.56')
- STA. 821+15.00 TO STA. 821+50.00 = 17.56' TO 16.00' (CORRUGATED MEDIAN)
- STA. 821+50.00 TO STA. 822+37.00 = 16.00' (CORRUGATED MEDIAN)

STRUCTURAL PAVEMENT DESIGN INFORMATION:
 STRUCTURAL DESIGN TRAFFIC: YEAR: 2018
 PV = 18,942 SU = 1,183 MU = 1,376
 ROAD/STREET CLASSIFICATION: CLASS 1
 PERCENT OF STRUCTURAL DESIGN TRAFFIC
 IN DESIGN LANE:
 P = 32% S = 45% M = 45%
 TRAFFIC FACTOR:
 RIGID TF: 10.17 MINIMUM TF: 6.03
 SUBGRADE SUPPORT RATING: POOR

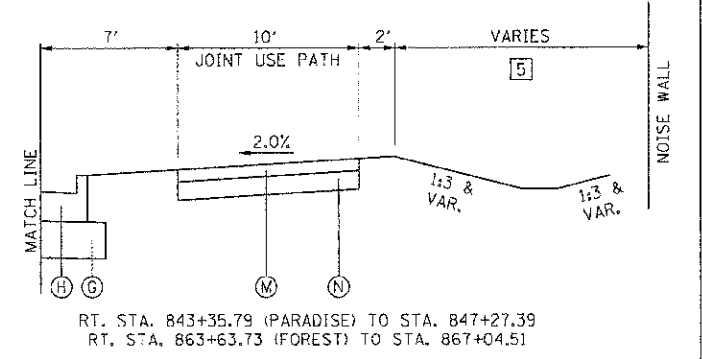
- LEGEND
- (A) PORTLAND CEMENT CONCRETE PAVEMENT 9 3/4" (JOINTED)
 - (B) HOT-MIX ASPHALT SHOULDER, 8"
 - (C) CONCRETE MEDIAN SURFACE, 4" (RAISED MEDIAN)
 - (D) CONCRETE MEDIAN, TYPE M-2.12 (TRAVERSABLE MEDIAN), 9 3/4"
 - (E) CONCRETE MEDIAN, TYPE M-2.12 CORRUGATED (SPECIAL) (CORRUGATED MEDIAN)
 - (F) SUB-BASE GRANULAR MATERIAL, TYPE C
 - (G) SUB-BASE GRANULAR MATERIAL, TYPE A (CRUSHED), 12"
 - (H) COMBINATION CONCRETE CURB AND GUTTER, TYPE B-6.24
 - (J) COMBINATION CONCRETE CURB AND GUTTER, TYPE B-6.12
 - (K) PORTLAND CEMENT CONCRETE SIDEWALK, 4"
 - (L) AGGREGATE SHOULDERS TYPE B, 6"
 - (M) INCIDENTAL HOT-MIX ASPHALT SURFACING (224 LBS / SY), 2"
 - (N) AGGREGATE BASE COURSE, TYPE A, 6"
 - (O) AGGREGATE SUBGRADE IMPROVEMENT 24"
 - (W) CONCRETE MEDIAN, TYPE SB (SPECIAL)
 - (X) CONCRETE MEDIAN, TYPE SM-4.12
- GRANULAR MATERIAL TO BE USED WHERE NEEDED AS FILL UNDER THE MEDIAN SURFACE OF THE VARIOUS MEDIAN TYPES.
 ** LIMITS: 863+44.48 TO 867+04.57
 *** OMIT FROM: 863+44.48 TO 867+04.57



6 PROPOSED TYPICAL SECTION - IL ROUTE 71

STA 813+00.00 (P.E.) TO STA 818+63.33
 STA. 842+95.63 (PARADISE) TO STA. 847+27.39
 STA. 863+44.48 (FOREST) TO STA. 867+04.57
 LOOKING EAST

- 1 STA. 813+00.00 TO STA. 813+60.15 = 6.00' (SIDEROAD OPENING)
- STA. 813+60.15 TO STA. 816+63.65 = 6.00' (RAISED MEDIAN)
- STA. 816+63.65 TO STA. 818+63.33 = TRANSITION FROM 6.00' TO 18.00' (RAISED MEDIAN)
- STA. 842+95.63 TO STA. 843+40.39 = 4.00' (SIDEROAD OPENING)
- STA. 843+40.39 TO STA. 845+27.39 = 4.00' (RAISED MEDIAN)
- STA. 845+27.39 TO STA. 845+37.39 = TRANSITION FROM RAISED MEDIAN TO TRAVERSABLE MEDIAN
- STA. 845+37.39 TO STA. 847+27.39 = TRANSITION FROM 4.00' TO 16.00' (TRAVERSABLE MEDIAN)
- STA. 863+44.48 TO STA. 864+18.01 = 4.00' (SIDEROAD OPENING)
- STA. 864+18.01 TO STA. 865+49.57 = 4.00' (RAISED MEDIAN)
- STA. 865+49.57 TO STA. 865+59.57 = TRANSITION FROM RAISED MEDIAN TO TRAVERSABLE MEDIAN
- STA. 865+59.57 TO STA. 867+04.57 = TRANSITION FROM 4.00' TO 16.00' (TRAVERSABLE MEDIAN)



RT. STA. 843+35.79 (PARADISE) TO STA. 847+27.39
 RT. STA. 863+63.73 (FOREST) TO STA. 867+04.57

5 NOISE WALL LOCATION
 65.00' RT. STA. 843+74.00 TO STA. 847+27.39
 65.00' RT. STA. 864+45.00 TO STA. 867+04.57

REVISIONS	
NAME	DATE

ILLINOIS DEPARTMENT OF TRANSPORTATION

TYPICAL CROSS SECTIONS

SCALE: VERT. HORIZ. DATE: 7/5/2012

DRAWN BY: SAE
 CHECKED BY: MED

LT. STA. 843+40.39 (PARADISE) TO STA. 847+27.39
 LT. STA. 864+18.01 (FOREST) TO STA. 867+04.57

2 NOISE WALL LOCATION
 46.66' LT. STA. 843+40.39 TO STA. 845+11.72
 46.66' LT. STA. 845+11.72 TO 60.50' LT. STA. 845+18.92
 60.50' LT. STA. 845+18.92 TO STA. 847+27.39

I:\proj\3109914\1\1\typ\sec-66.dgn
 FILE NAME: p:\proj\3109914\1\1\typ\sec-66.dgn
 PLOT DATE: 7/5/2012
 PLOT TIME: 11:11:11 AM