

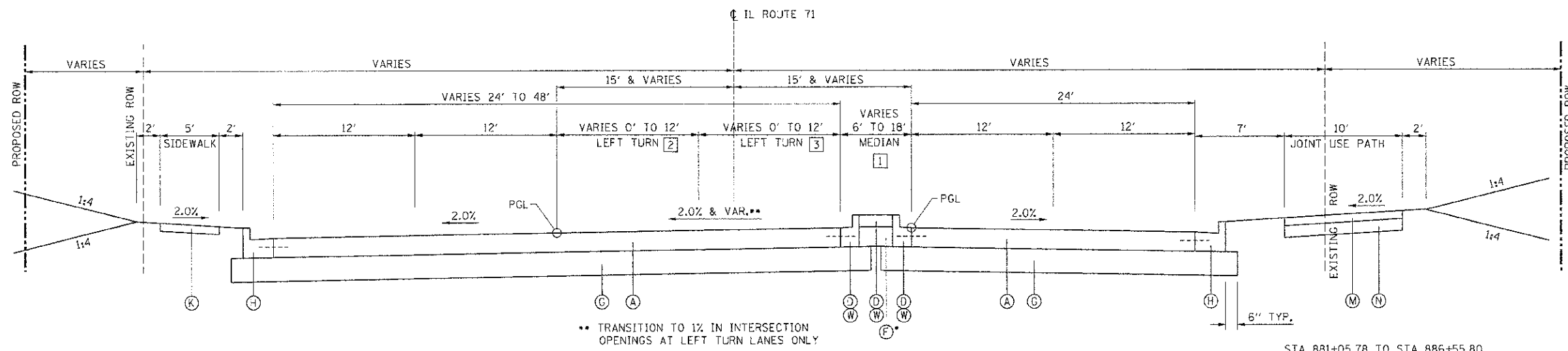
9 PROPOSED TYPICAL SECTION - IL ROUTE 71
STA 873+04.93 TO STA 880+24.08 (PLAINFIELD)
LOOKING EAST

STRUCTURAL PAVEMENT DESIGN INFORMATION:
STRUCTURAL DESIGN TRAFFIC: YEAR: 2018
PV = 18,942 SU = 1,183 MU = 1,376
ROAD/STREET CLASSIFICATION: CLASS 1
PERCENT OF STRUCTURAL DESIGN TRAFFIC
IN DESIGN LANE:
P = 32% S = 45% M = 45%
TRAFFIC FACTOR:
RICID TF: 10.17 MINIMUM TF: 6.03
SUBGRADE SUPPORT RATING: POOR

- 1 STA. 873+04.93 TO STA. 874+50.00 = 16.00' (TRAVERSABLE MEDIAN)
STA. 874+50.00 TO STA. 875+82.85 = TRANSITION FROM 16.00' TO 22.82' (TRAVERSABLE MEDIAN)
STA. 875+82.85 TO STA. 877+22.85 = TRANSITION FROM 22.82' TO 18.00' (TRAVERSABLE MEDIAN)
STA. 877+22.85 TO STA. 877+28.85 = TRANSITION FROM TRAVERSABLE MEDIAN TO RAISED MEDIAN
STA. 877+22.85 TO STA. 879+52.29 = 18.00' (RAISED MEDIAN)
STA. 879+52.29 TO STA. 880+24.08 = 18.00' (SIDEROAD OPENING)
- 2 STA. 875+82.85 TO STA. 877+22.85 = TRANSITION FROM 0.00' TO 12.00'
STA. 877+22.85 TO STA. 879+52.29 = 12.00'
- 3 STA. 873+04.93 TO STA. 874+59.90 = TRANSITION FROM 0.00' TO 12.00'
STA. 874+59.90 TO STA. 879+52.29 = 12.00'
- 4 NOISE WALL
65.00' RT. STA. 873+04.93 TO STA. 874+60.00

LEGEND

- (A) PORTLAND CEMENT CONCRETE PAVEMENT 9 3/4" (JOINTED)
- (B) HOT-MIX ASPHALT SHOULDER, 8"
- (C) CONCRETE MEDIAN SURFACE, 4" (RAISED MEDIAN)
- (D) CONCRETE MEDIAN, TYPE M-2.12 (TRAVERSABLE MEDIAN), 9 3/4"
- (E) CONCRETE MEDIAN, TYPE M-2.12 CORRUGATED (SPECIAL) (CORRUGATED MEDIAN)
- (F) SUB-BASE GRANULAR MATERIAL, TYPE C
- (G) SUB-BASE GRANULAR MATERIAL, TYPE A (CRUSHED), 12"
- (H) COMBINATION CONCRETE CURB AND GUTTER, TYPE B-6.24
- (J) COMBINATION CONCRETE CURB AND GUTTER, TYPE B-6.12
- (K) PORTLAND CEMENT CONCRETE SIDEWALK, 4"
- (L) AGGREGATE SHOULDERS TYPE B, 6"
- (M) INCIDENTAL HOT-MIX ASPHALT SURFACING (224 LBS / 5Y), 2"
- (N) AGGREGATE BASE COURSE, TYPE A, 6"
- (O) AGGREGATE SUBGRADE IMPROVEMENT 24"
- (W) CONCRETE MEDIAN, TYPE SB (SPECIAL)



10 PROPOSED TYPICAL SECTION - IL ROUTE 71
STA 880+24.08 (PLAINFIELD) TO STA 886+56.58
LOOKING EAST

- 1 STA. 880+24.08 TO STA. 880+95.32 = 6.00' (SIDEROAD OPENING)
STA. 880+95.32 TO STA. 884+16.47 = 6.00' (RAISED MEDIAN)
STA. 884+16.47 TO STA. 884+26.47 = TRANSITION FROM RAISED MEDIAN TO TRAVERSABLE MEDIAN
STA. 884+16.47 TO STA. 886+56.58 = TRANSITION FROM 6.00' TO 18.00' (TRAVERSABLE MEDIAN)
- 2 STA. 880+95.32 TO STA. 885+36.61 = 12.00'
STA. 885+36.61 TO STA. 886+56.58 = TRANSITION FROM 12.00' TO 0.00'
- 3 STA. 880+95.32 TO STA. 884+16.47 = 12.00'
STA. 884+16.47 TO STA. 885+36.61 = TRANSITION FROM 12.00' TO 0.00'

GRANULAR MATERIAL TO BE USED WHERE NEEDED AS FILL UNDER THE MEDIAN SURFACE OF THE VARIOUS MEDIAN TYPES.

REVISIONS	
NAME	DATE

ILLINOIS DEPARTMENT OF TRANSPORTATION

TYPICAL CROSS SECTIONS

SCALE: VERT. HORIZ. DATE 7/5/2012

DRAWN BY SAE CHECKED BY MED