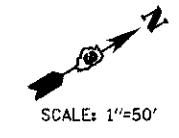


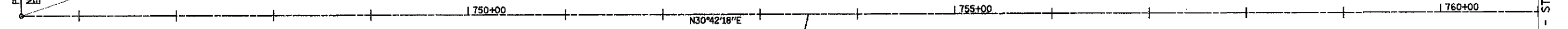
F.A.P. RTE.	SECTION	COUNTY	TOTAL SHEETS	SHEET NO.
311	01-10R	KENDALL	514	76
STA. 780+44.91 TO STA. 918+85.88				
FED. ROAD DIST. NO.		ILLINOIS	FED. AID PROJECT	

BENCHMARK	DESCRIPTION	ELEVATION	STATION	OFFSET
BM65	CHIS (X) TOP N. EDGE LIGHT POLE FOUNDATION SE QUAD. OF IL. 71 & ORCHARD RD.	649.093	798+71	40' RT
BM75	CHIS (X) TOP NE. BOLT OF F.H. SE QUAD. OF IL. 71 & PARADISE PKWY	664.823	843+26	65' RT
BM92	CHIS (X) ON CAP BOLT F.H. SE QUAD. OF IL. 71 & MUNICIPAL RD.	666.010	896+27	39' RT
BM93	CHIS (X) TOP BOLT F.H. SW QUAD. OF IL. 71 & BELL CT.	670.202	900+06	41' RT



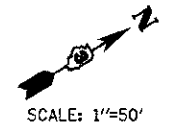
NO TIE INFORMATION AVAILABLE

POT STA. 745+40.47
N=1819347.9880
E=568961.7430

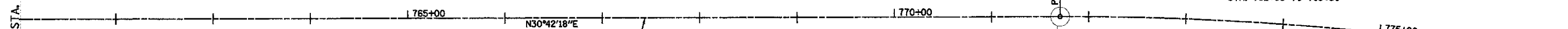


MATCH LINE - STA. 761 + 00

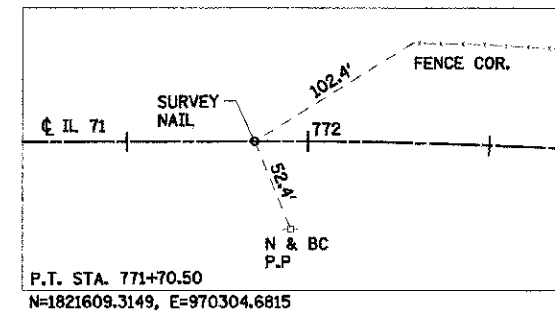
PROP. CURVE NO. 1
PI STA. 783+62.63 (TANGENT)
N=1822633.9710, E=970913.1960
Δ = 41° 05' 09" (RT)
D = 1° 48' 06"
T = 1,191.73'
R = 3,180.16'
L = 2,280.43'
E = 215.96'
e = 2.8%
PC STA. 771+70.50
N=1821609.3149, E=970304.6815
PT STA. 794+50.94
N=1823006.3744, E=972045.2409
TRANSITION 2.8% TO 2%
STA. 782+90 TO 785+50



MATCH LINE - STA. 761 + 00



MATCH LINE - STA. 777 + 00



REVISIONS	
NAME	DATE

ILLINOIS DEPARTMENT OF TRANSPORTATION

ALIGNMENT AND TIES

SCALE: VERT. 1"=50'
HORIZ. 1"=50'

DATE 07/06/2012

DRAWN BY WS/KD
CHECKED BY JAP/DJB

TUG PROJ: 63065814
PLOT DATE: 7/9/2012
FILE NAME: F:\BNS-1156\11 71 Omega\1\CADD\CD\1106-01 T.dgn

BLOOM COMPANIES, LLC
 Differentiate Innovation and Integrity
 600 W. Fulton Street Suite 201 • Chicago, IL 60601
 Phone: (312) 876-5550 Fax: (312) 876-8852