

F.A.P. RTE.	SECTION	COUNTY	TOTAL SHEETS	SHEET NO.
311	(1-1)R	KENDALL	514	78
STA. 780+44.91		TO STA. 918+85.88		
FED. ROAD DIST. NO.		ILLINOIS	FED. AID PROJECT	

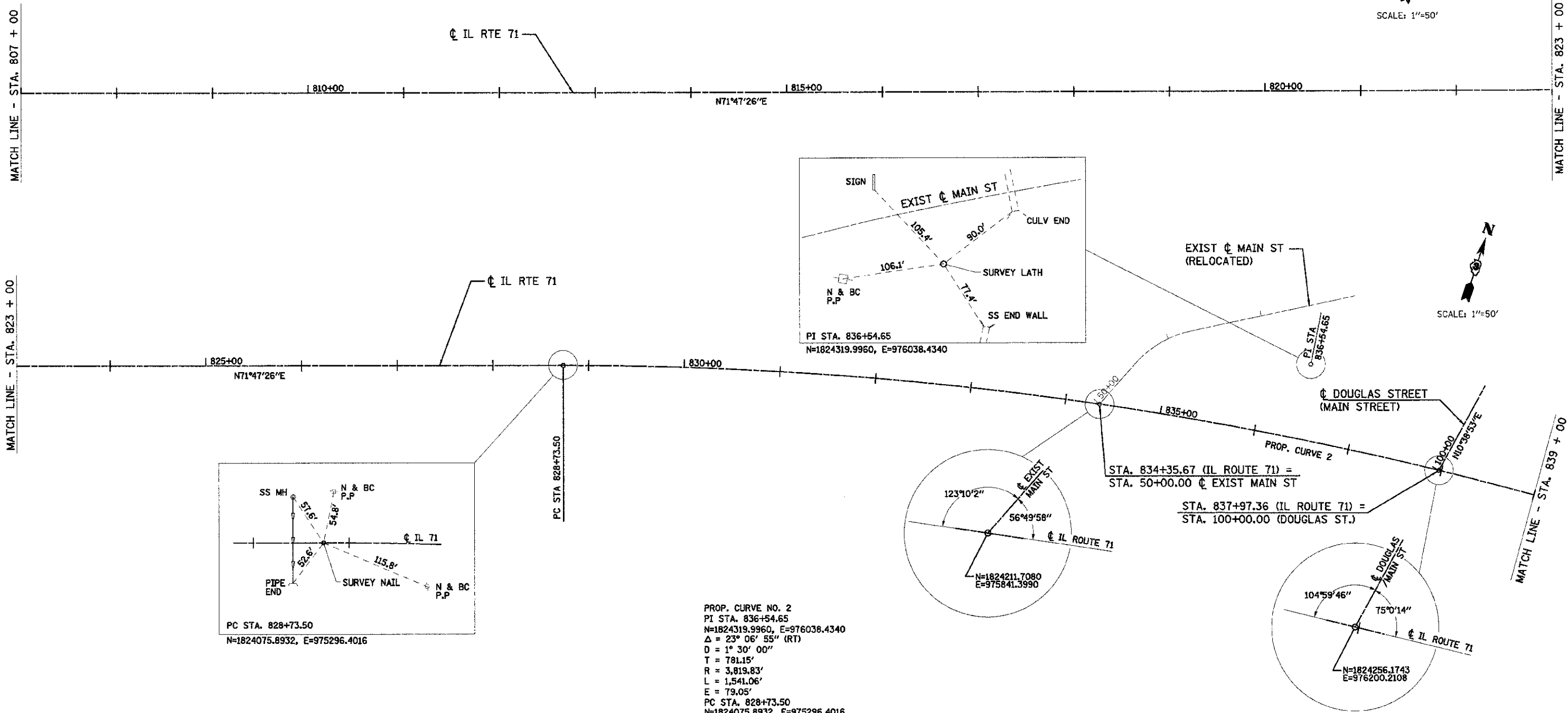


MATCH LINE - STA. 807 + 00

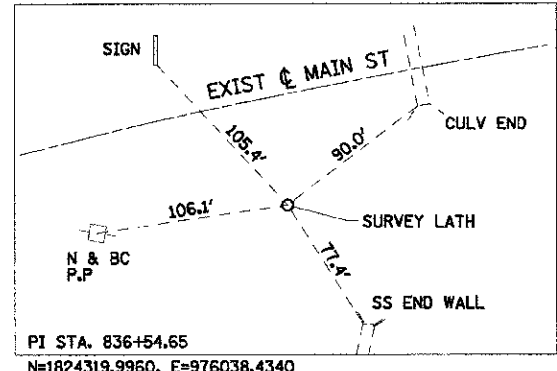
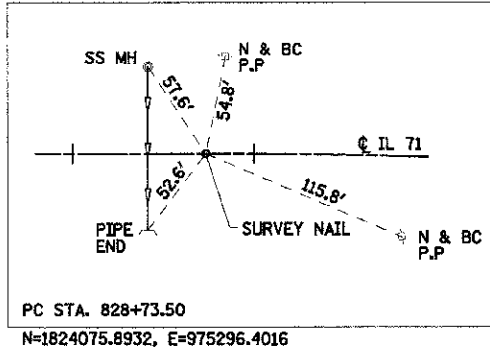
MATCH LINE - STA. 823 + 00

MATCH LINE - STA. 823 + 00

MATCH LINE - STA. 839 + 00



SCALE: 1"=50'



PROP. CURVE NO. 2  
 PI STA. 836+54.65  
 $N=1824319.9960, E=976038.4340$   
 $\Delta = 23^{\circ} 06' 55''$  (RT)  
 $D = 1^{\circ} 30' 00''$   
 $T = 781.15'$   
 $R = 3,819.83'$   
 $L = 1,541.06'$   
 $E = 79.05'$   
 PC STA. 828+73.50  
 $N=1824075.8932, E=975296.4016$   
 PT STA. 844+14.55  
 $N=1824253.1942, E=976816.7243$

STA. 834+35.67 (IL ROUTE 71) =  
 STA. 50+00.00  $\phi$  EXIST MAIN ST

STA. 837+97.36 (IL ROUTE 71) =  
 STA. 100+00.00 (DOUGLAS ST.)

REVISIONS	
NAME	DATE

ILLINOIS DEPARTMENT OF TRANSPORTATION

**ALIGNMENT AND TIES**

SCALE: VERT. 1"=50'  
 HORIZ. 1"=50'  
 DATE: 07/06/2012

DRAWN BY: WS/KD  
 CHECKED BY: JAP/DJB

TUG PROJ: 12052614  
 FILE NAME: F:\12052614\12052614.dwg  
 II 71 Drawings\LD\800\00\12052614.dwg

