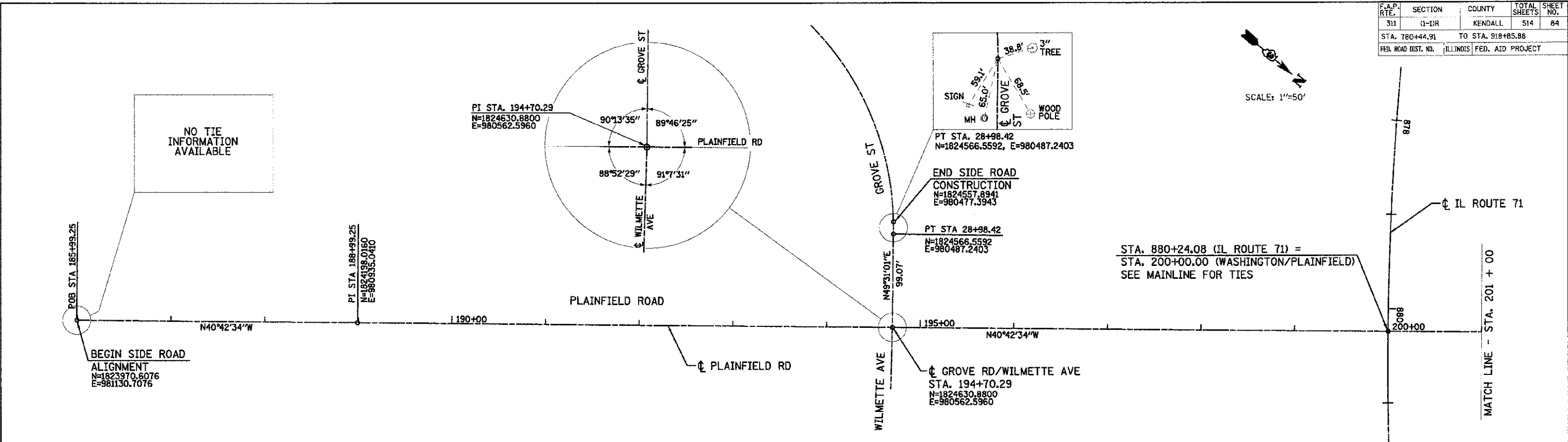
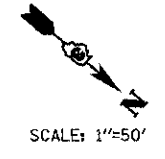
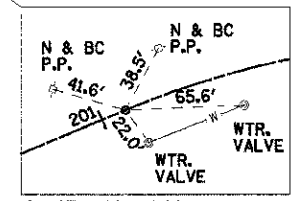
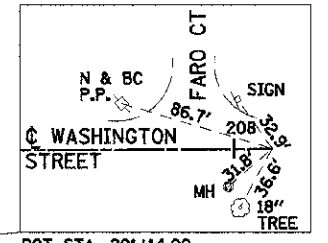
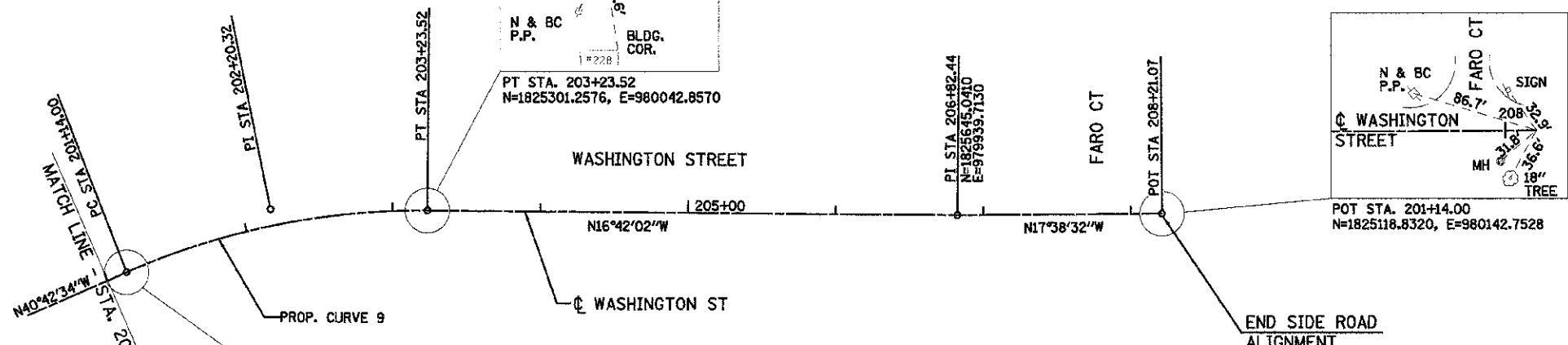
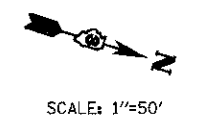
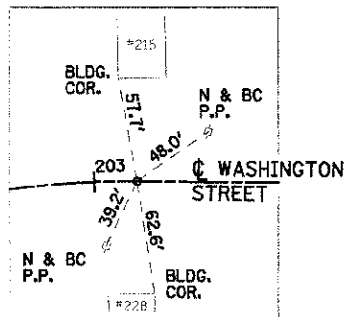


F.A.P. RTE.	SECTION	COUNTY	TOTAL SHEETS	SHEET NO.
311	1-1R	KENDALL	514	84
STA. 780+44.91		TO STA. 918+85.88		
FED. ROAD DIST. NO.		ILLINOIS FED. AID PROJECT		



Prop. Curve No. 9
 PI STA. 202+20.32 (TANGENT)
 N=1825198.4241, E=980073.4098
 $\Delta = 24^\circ 00' 31''$ (RT)
 D = $11^\circ 27' 33''$
 T = 106.32'
 R = 500.00'
 L = 209.52'
 E = 11.18'
 e = N/C
 T.R. = N/A
 S.E. = N/A
 PC STA. 201+14.00
 N=1825118.8320, E=980142.7528
 PT STA. 203+23.52
 N=1825301.2576, E=980042.8570



REVISIONS	
NAME	DATE

ILLINOIS DEPARTMENT OF TRANSPORTATION

ALIGNMENT AND TIES

SCALE: VERT. 1"=50'
 HORIZ. 1"=50'

DATE: 07/06/2012

DRAWN BY: WS/KD
 CHECKED BY: JAP/DJB

TUC PROJ. #060584
 PLOT DATE = 7/5/2012
 FILE NAME = F:\BNS-115W 11 71 Design\AL_CADD\CDA\Nun\31159.AL T 8.dgn

BLOOM COMPANIES, LLC
 Infrastructure Innovation and Expertise
 600 W. Fullerton Street, Suite 707 • Chicago, IL 60611
 Phone: (312) 676-8000 Fax: (312) 676-8807