

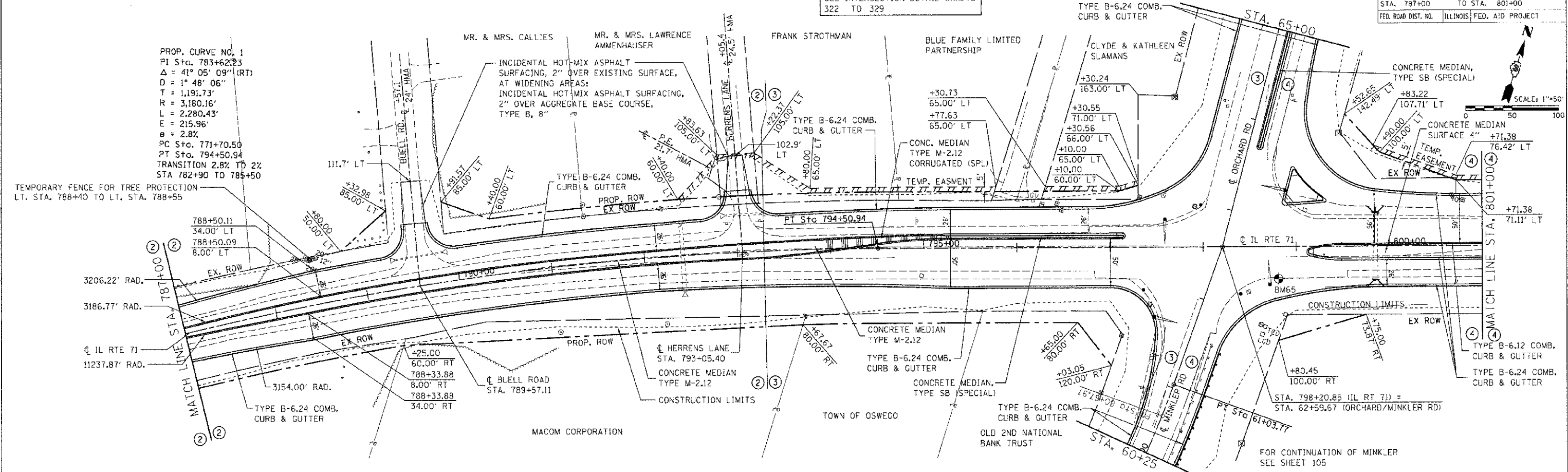
F.A.P. RTE.	SECTION	COUNTY	TOTAL SHEETS	SHEET NO.
311	(1-1)R	KENDALL	514	95
STA. 797+00		TO STA. 801+00		
FED. ROAD DIST. NO.		ILLINOIS FED. AID PROJECT		

FOR STATION & OFFSET CALLOUTS AT NEW ROAD TAPERS AND RADII SEE INTERSECTION DETAIL SHEETS 322 TO 329

FOR CONTINUATION OF ORCHARD SEE SHEET 106

PROP. CURVE NO. 1
 PI Sta. 783+62.23
 $\Delta = 41^\circ 05' 09''$ (RT)
 $D = 1^\circ 48' 06''$
 $T = 1,191.73'$
 $R = 3,180.16'$
 $L = 2,280.43'$
 $E = 215.96'$
 $e = 2.8\%$
 PC Sta. 771+70.50
 PT Sta. 794+50.94
 TRANSITION 2.8% TO 2%
 STA 782+90 TO 785+50

TEMPORARY FENCE FOR TREE PROTECTION
 LT. STA. 788+40 TO LT. STA. 788+55



STATION	BENCHMARK	DESCRIPTION	ELEVATION	STATION	OFFSET
786+00	BM65	CHIS (X) TOP N. EDGE LIGHT POLE FOUNDATION SE QUAD. OF IL. 71 & ORCHARD RD.	649.093	798-71	40' RT
787+00					
788+00					
789+00					
790+00					
791+00					
792+00					
793+00					
794+00					
795+00					
796+00					
797+00					
798+00					
799+00					
800+00					
801+00					