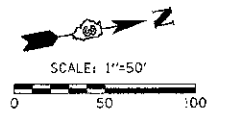
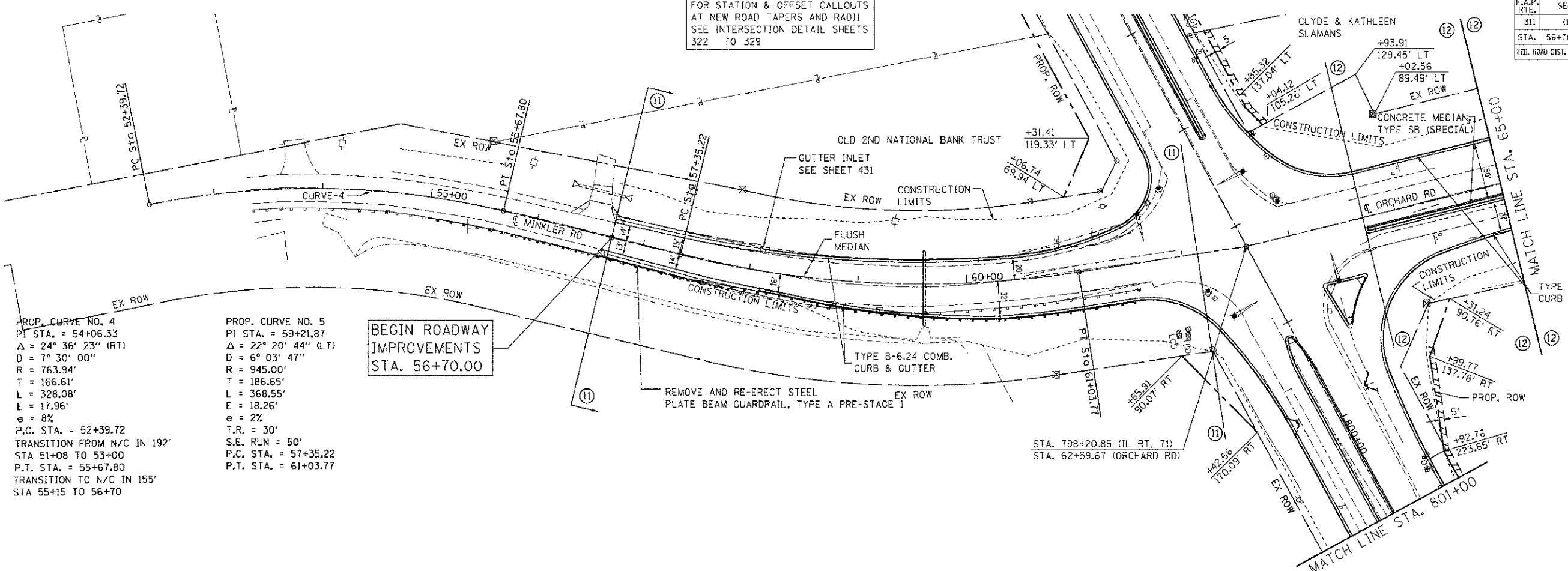


F.A.P. RTE.	SECTION	COUNTY	TOTAL SHEETS	SHEET NO.
311	11-11R	KENDALL	514	105
STA. 56+70		TO STA. 65+00		
FED. ROAD DIST. NO.		ILLINOIS FED. AID PROJECT		



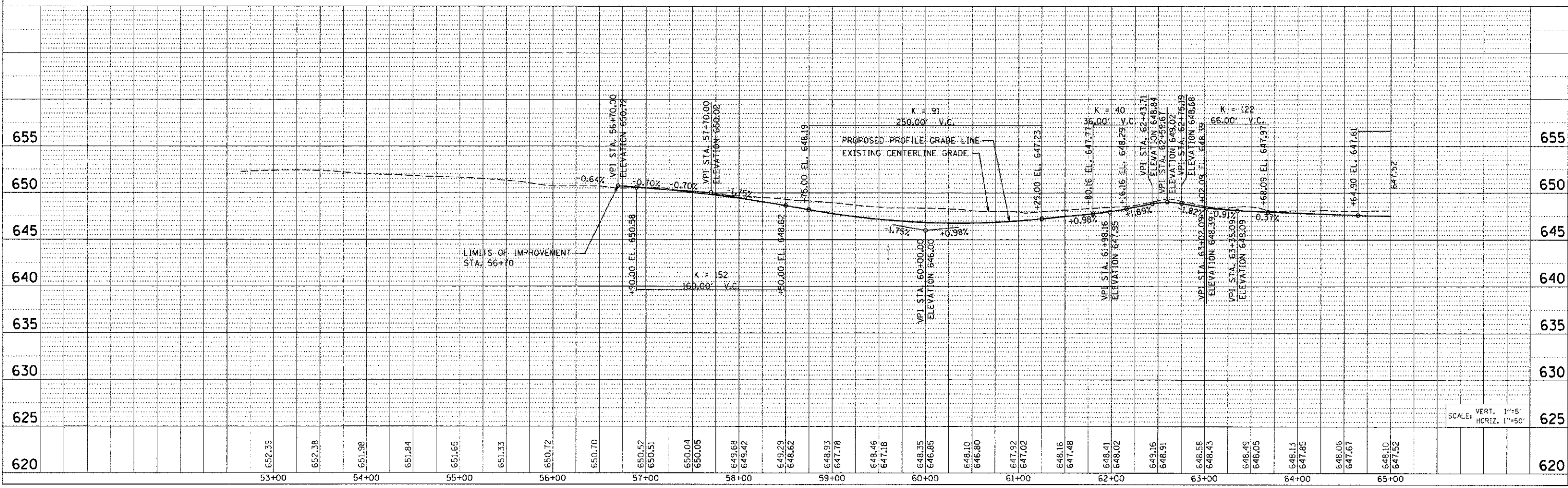
FOR STATION & OFFSET CALLOUTS AT NEW ROAD TAPERS AND RADII SEE INTERSECTION DETAIL SHEETS 322 TO 329



PROP. CURVE NO. 4
 PT STA. = 54+06.33
 $\Delta = 24^\circ 36' 23''$ (RT)
 $D = 7^\circ 30' 00''$
 $R = 763.94'$
 $T = 166.61'$
 $L = 328.08'$
 $E = 17.96'$
 $e = 8\%$
 P.C. STA. = 52+39.72
 TRANSITION FROM N/C IN 192'
 STA 51+08 TO 53+00
 P.T. STA. = 55+67.80
 TRANSITION TO N/C IN 155'
 STA 55+15 TO 56+70

PROP. CURVE NO. 5
 PI STA. = 59+21.87
 $\Delta = 22^\circ 20' 44''$ (LT)
 $D = 6^\circ 03' 47''$
 $R = 945.00'$
 $T = 186.65'$
 $L = 368.55'$
 $E = 18.26'$
 $e = 2\%$
 T.R. = 30'
 S.E. RUN = 50'
 P.C. STA. = 57+35.22
 P.T. STA. = 61+03.77

BEGIN ROADWAY IMPROVEMENTS STA. 56+70.00



SCALE: VERT. 1"=5'
 HORIZ. 1"=50'

TUG PROJ: 2305814
 PLOT DATE: 7/25/2012
 FILE NAME: p:\civil\1\doc\1\dist3\cswego\phase 11\PL171-11.dgn