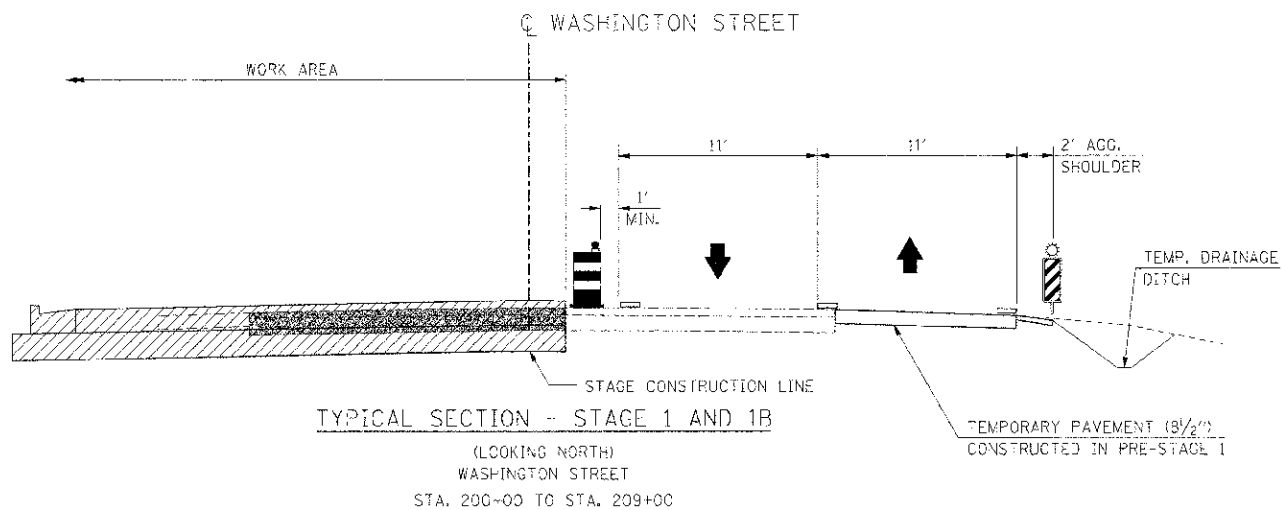
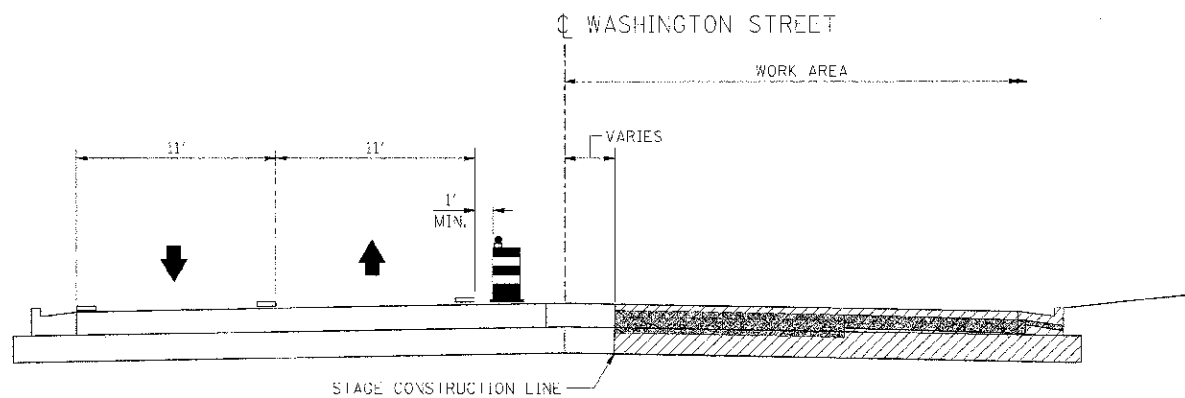


F.A.P. RTE.	SECTION	COUNTY	TOTAL SHEETS	SHEET NO.
S:1	(E-1) R	KENDALL	514	127
STA.	TO STA.			
FED. ROAD DIST. NO.	ILLINOIS FED. AID PROJECT			



TYPICAL SECTION - STAGE 1 AND 1B




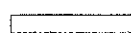
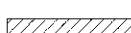


(LOOKING NORTH)
WASHINGTON STREET
STA. 200+00 TO STA. 209+00



TYPICAL SECTION - STAGE 1D AND 1E

(LOOKING NORTH)
WASHINGTON STREET
STA. 200+00 TO STA. 209+00

LEGEND

-  VERTICAL PANEL
-  DRUM WITH STEADY BURNING LIGHT
-  TRAFFIC FLOW
-  PREVIOUS STAGE CONSTRUCTION
-  CURRENT STAGE CONSTRUCTION
-  PAVEMENT REMOVAL
-  TEMPORARY PAVEMENT MARKING

REVISIONS	
NAME	DATE

ILLINOIS DEPARTMENT OF TRANSPORTATION
MAINTENANCE OF TRAFFIC
STAGE 1 & SUBSTAGES
TYPICAL SECTIONS - SIDEROADS

SCALE: NONE
DATE 7/3/2012

DRAWN BY AAD
CHECKED BY RG

IE PROJ: 66420
 FILE NAME: G:\66420\CD\1171\NOTES\11BESH1