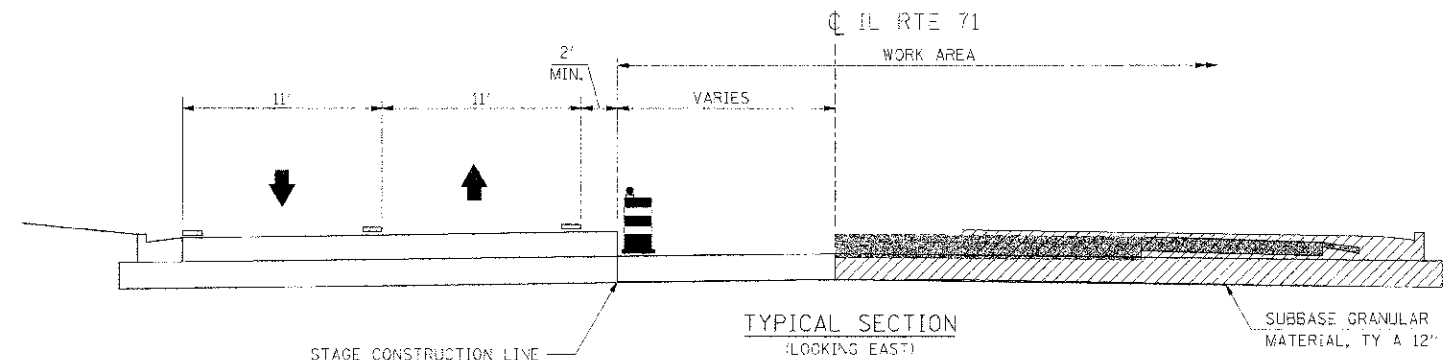
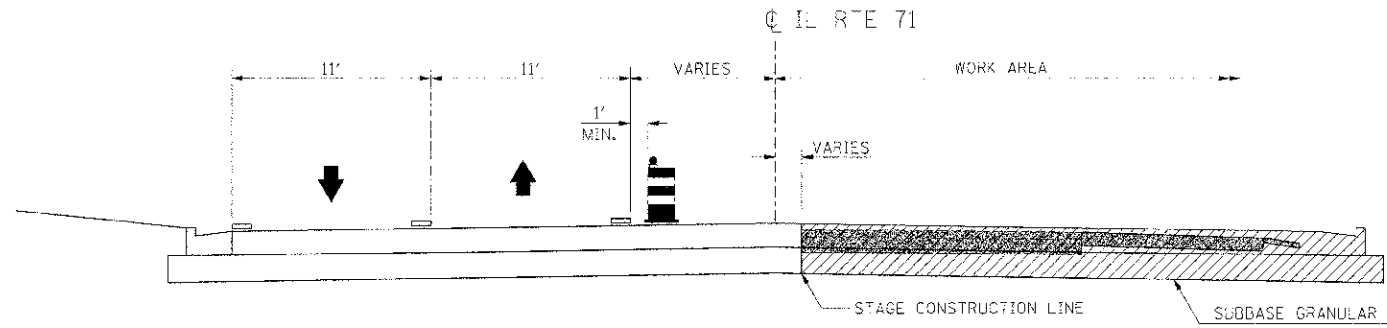


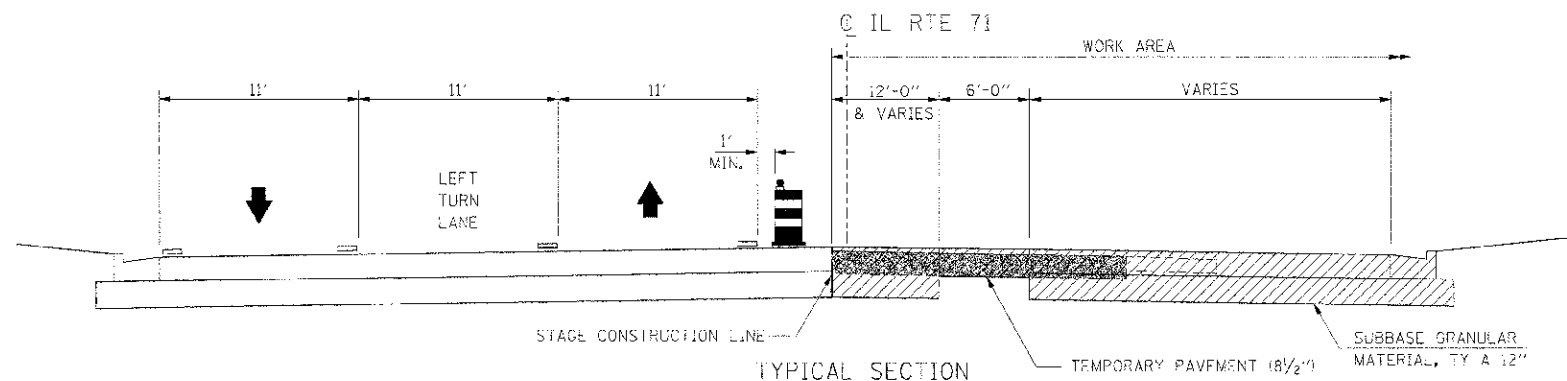
F.A.P. RT.	SECTION	COUNTY	TOTAL SHEETS	SHEET NO.
311	U-D R	KENDAL	514	128
STA.	TO STA.			
FED. ROAD DIST. NO.	ILLINOIS FED. AID PROJECT			



TYPICAL SECTION
(LOOKING EAST)
ILLINOIS ROUTE 71
STA. 808+00 TO STA. 859+80
STA. 870+00 TO STA. 874+00
STA. 884+00 TO STA. 918+00










TYPICAL SECTION
(LOOKING EAST)
ILLINOIS ROUTE 71
STA. 859+80 TO STA. 870+00
STA. 874+00 TO STA. 880+24.08



TYPICAL SECTION
(LOOKING EAST)
ILLINOIS ROUTE 71
STA. 880+24.08 TO STA. 884+00

LEGEND

-  VERTICAL PANEL
-  DRUM WITH STEADY BURNING LIGHT
-  TRAFFIC FLOW
-  PREVIOUS STAGE CONSTRUCTION
-  CURRENT STAGE CONSTRUCTION
-  PAVEMENT REMOVAL
-  TEMPORARY PAVEMENT MARKING

REVISIONS	
NAME	DATE

ILLINOIS DEPARTMENT OF TRANSPORTATION
MAINTENANCE OF TRAFFIC
STAGE 2
TYPICAL SECTIONS - MAINLINE

SCALE: NONE
DATE: 7/3/2012

DRAWN BY: AAD
CHECKED BY: RG

IE PROJ: 66420
PLOT DATE: 7/3/2012
FILE NAME: G:\66420\CAD\17_1407_TS_281.DWG