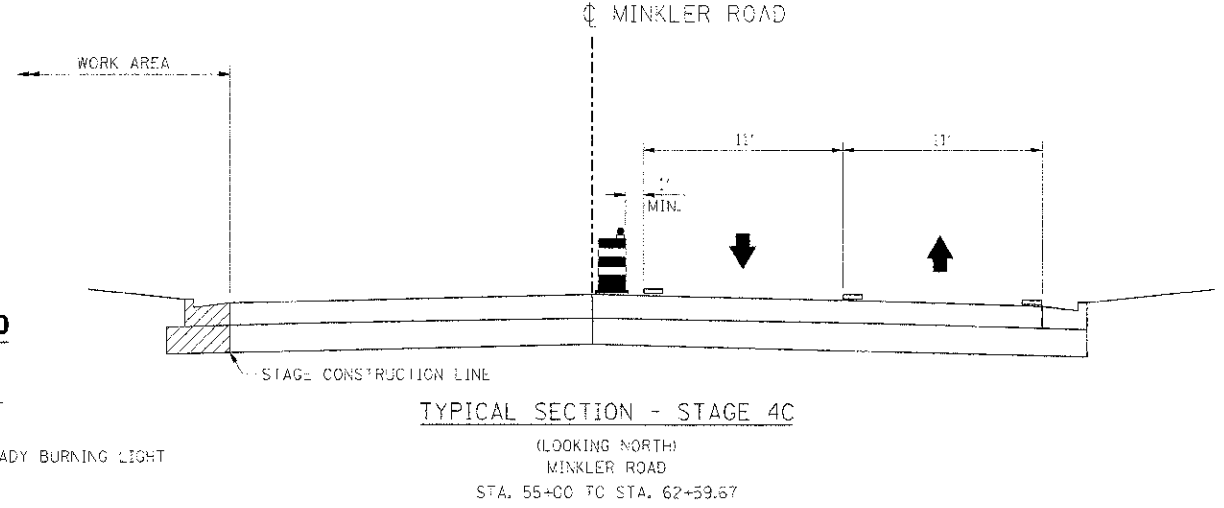
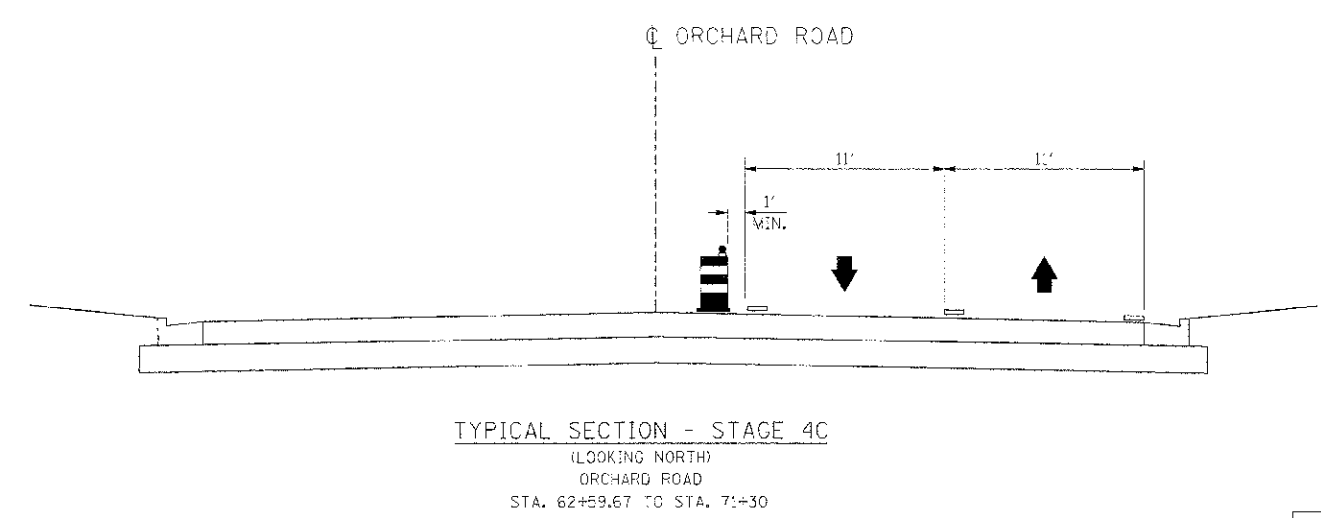
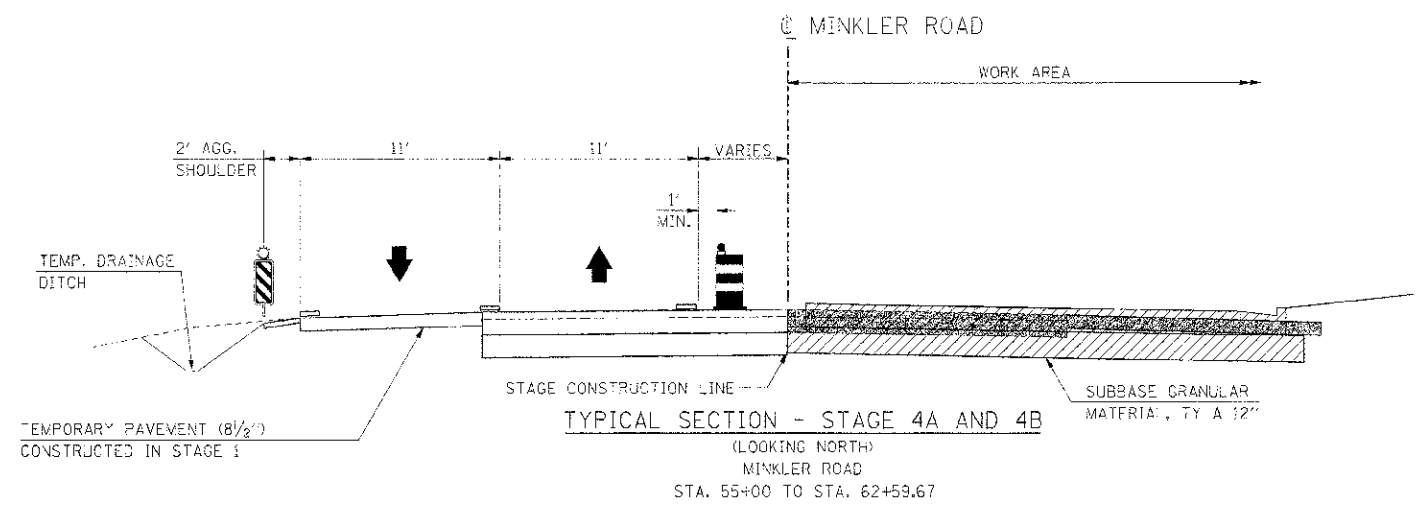
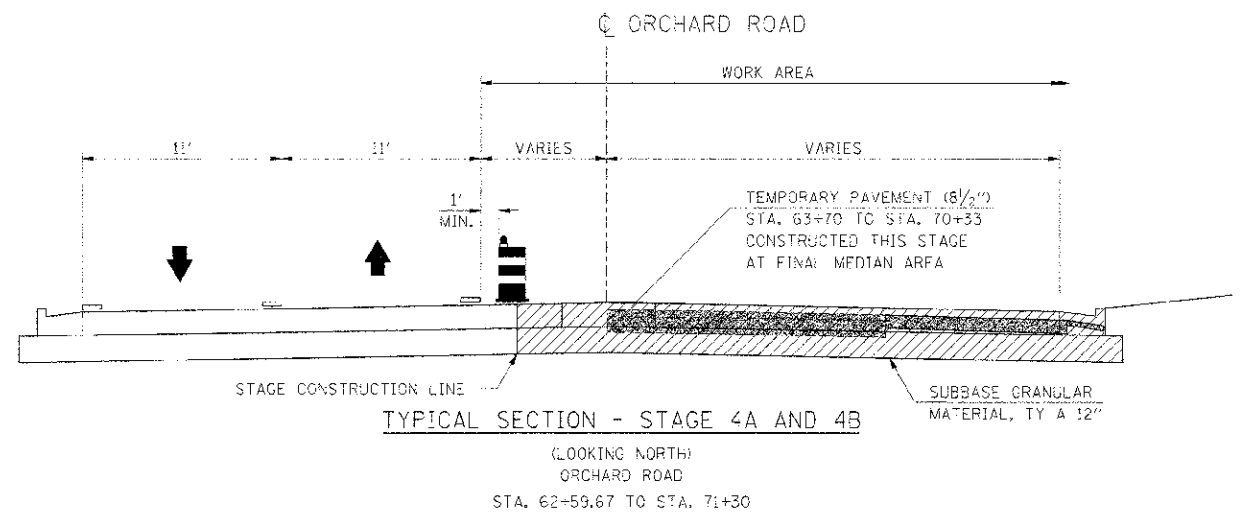
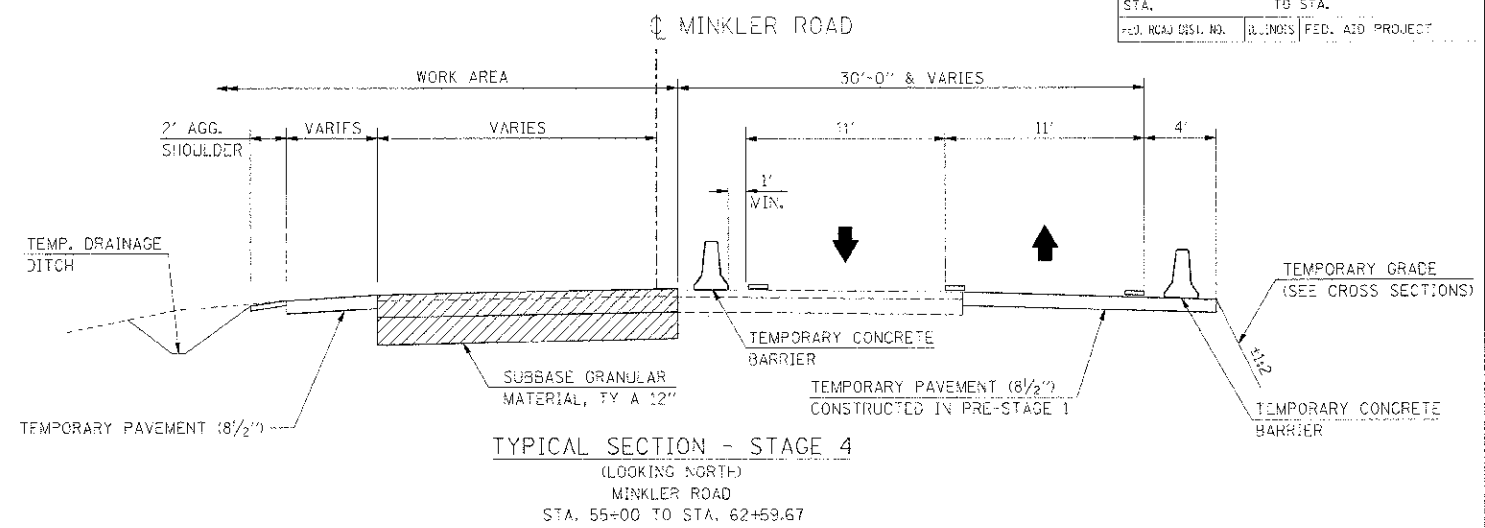
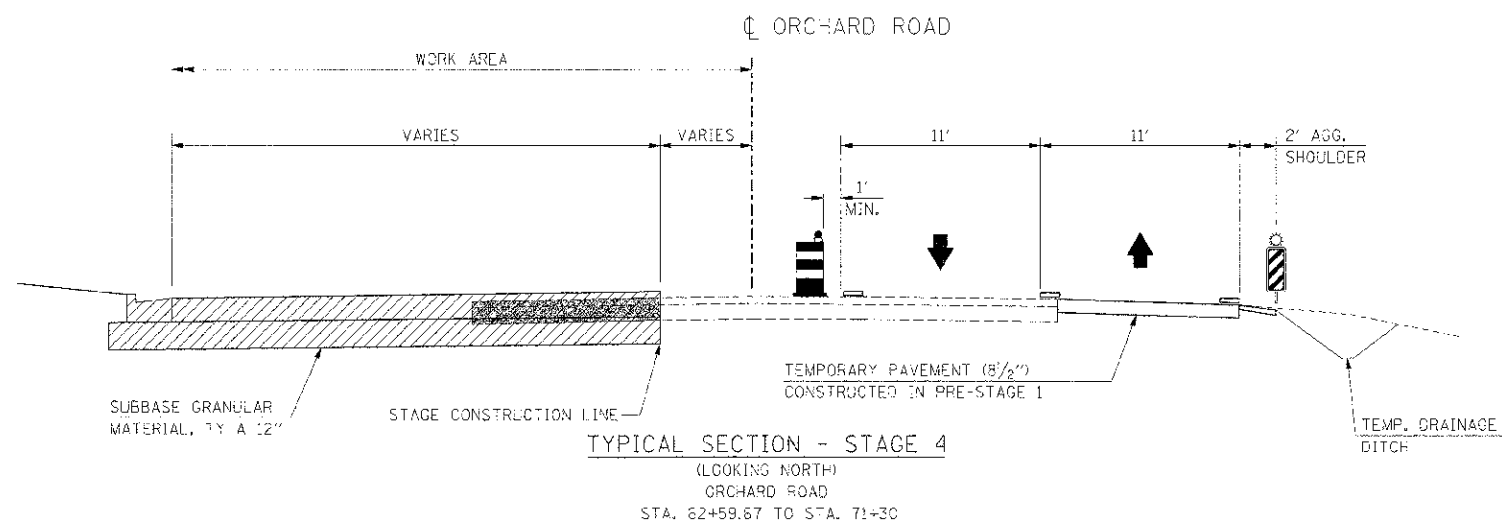


F.A.P. RTE.	SECTION	COUNTY	TOTAL SHEETS	SHEET NO.
313	(1-2) R	KENDALL	514	133
STA.	TO STA.			
62+59.67	71+30			
FED. ROAD DIST. NO.	B.L. NOS.	FED. AID PROJECT		



- LEGEND**
- VERTICAL PANEL
 - DRUM WITH STEADY BURNING LIGHT
 - TRAFFIC FLOW
 - PREVIOUS STAGE CONSTRUCTION
 - CURRENT STAGE CONSTRUCTION
 - PAVEMENT REMOVAL
 - TEMPORARY PAVEMENT MARKING

REVISIONS	
NAME	DATE

ILLINOIS DEPARTMENT OF TRANSPORTATION
MAINTENANCE OF TRAFFIC
STAGE 4 & SUB-STAGES
TYPICAL SECTIONS - SIDEROADS

SCALE: NCAE
 DATE: 7/3/2012

DRAWN BY: AAD
 CHECKED BY: RC

ICF PROJ. # 5420205
 PLOT DATE = 7/3/2012
 FILE NAME = E:\313\PROJECTS\11.71.MET.TS.482.GPJ