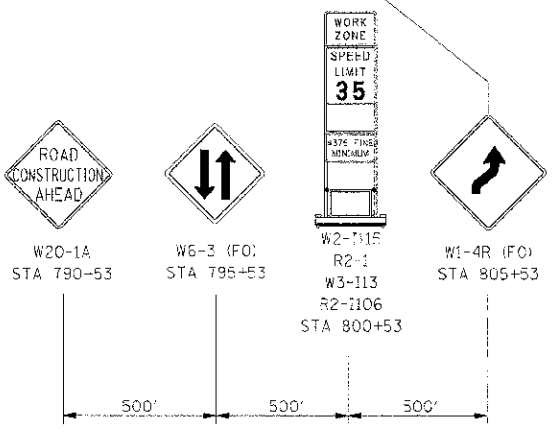
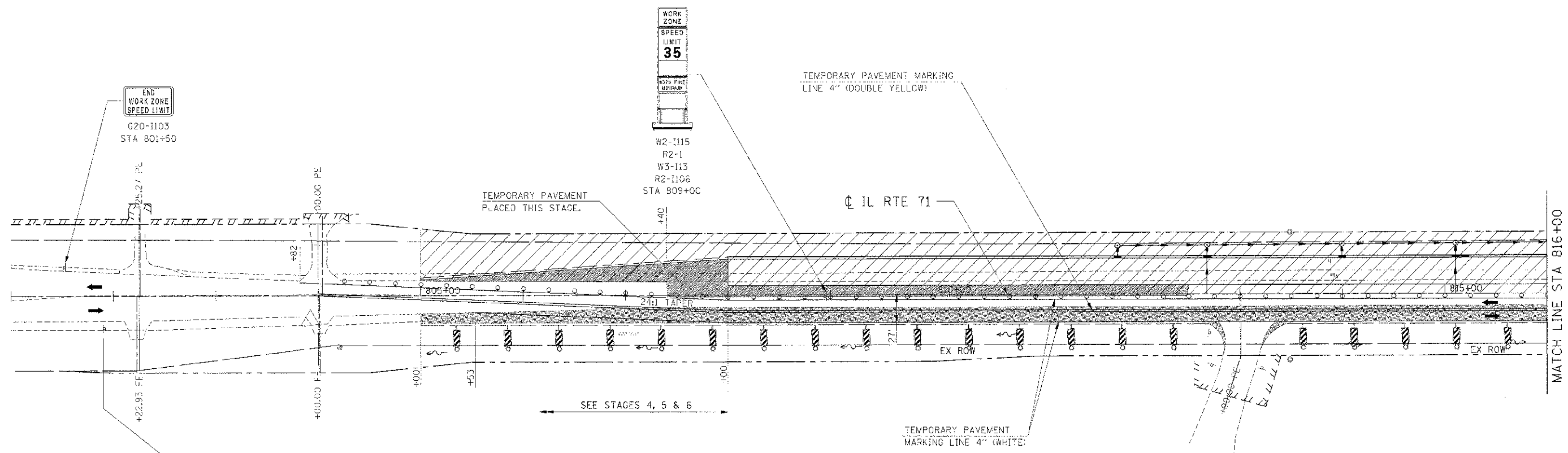


F.A.P. RTE.	SECTION	COUNTY	TOTAL SHEETS	SHEET NO.
311	(1-D) R	KENDALL	514	150
STA. 801+00		TO STA. 816+00		
FED. ROAD DIST. NO.		ILLINOIS FED. AID PROJECT		



**LEGEND**

- DRUM
- VERTICAL PANEL
- TYPE III BARRICADE
- TRAFFIC FLOW
- STAGE CONSTRUCTION
- TEMPORARY WIDENING / PAVEMENT

**NOTE:**  
CONTRACTOR SHALL MAINTAIN ACCESS TO ENTRANCES AND SIDE ROADS AT ALL TIMES EXCEPT AS NOTED TO BE CLOSED.

REVISIONS	
NAME	DATE

ILLINOIS DEPARTMENT OF TRANSPORTATION  
**MAINTENANCE OF TRAFFIC**  
**STAGE 1 (IL RTE 71)**  
**STA 801+00 TO STA 816+00**

SCALE: 1"=50'  
DATE: 11/12/2012

DRAWN BY:  
CHECKED BY: RG

IE PROJ: 595925  
PLOT DATE: 7/3/2012  
FILE NAME: G:\S\66420\STATION\71\MOI\_1103.SW