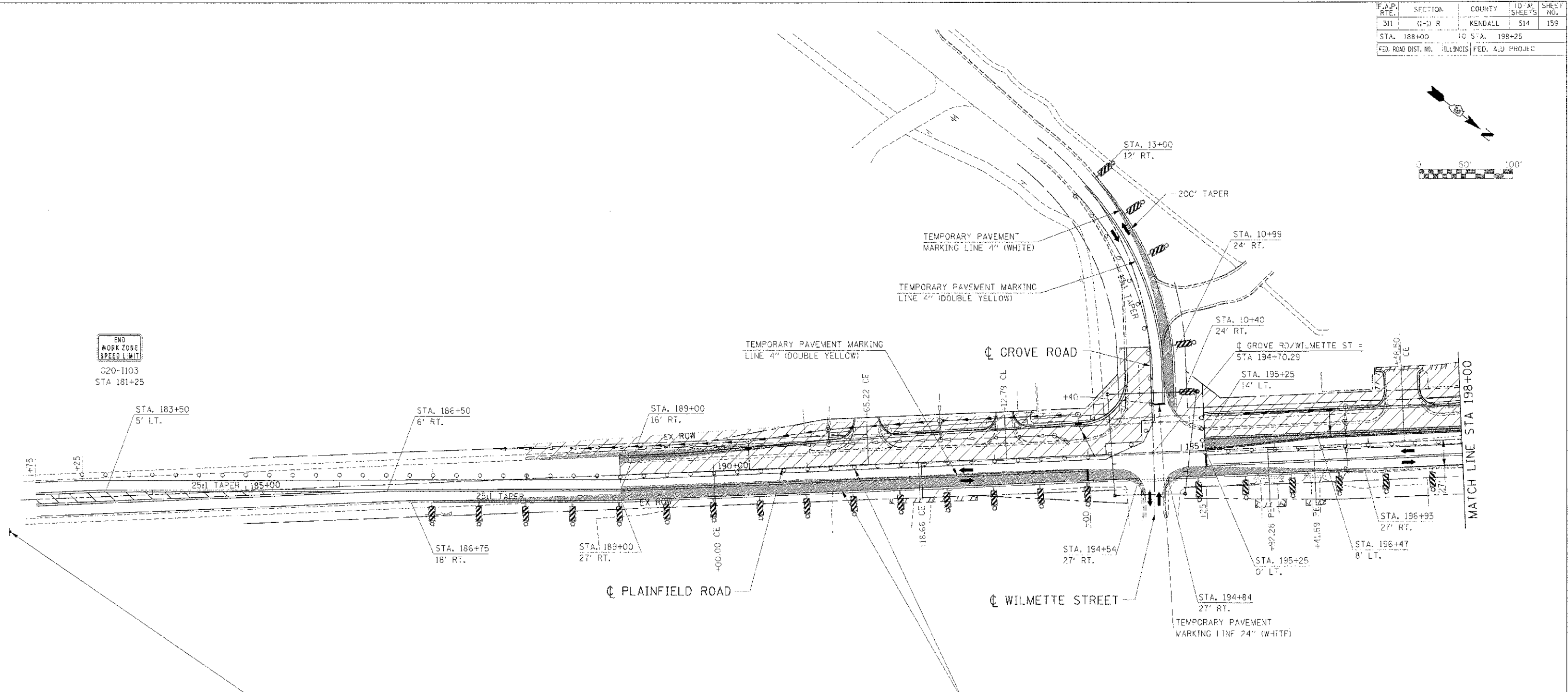
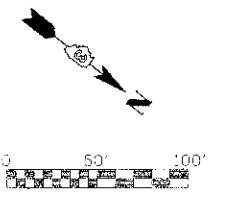
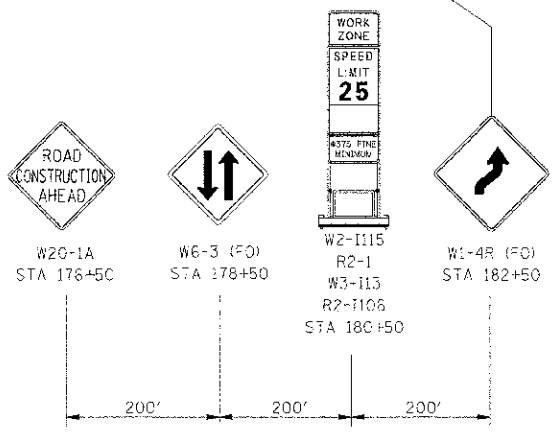


F.A.P. RTE.	SECTION	COUNTY	T.O. AS SHEETS	SHEET NO.
311	(3-2) R	KENDALL	514	158
STA. 188+00			TO STA. 198+25	
ILLINOIS FED. AID PROJEC				



END WORK ZONE SPEED LIMIT
G20-1103
STA 181+25



LEGEND

- DRUM
- VERTICAL PANEL
- TYPE III BARRICADE
- TRAFFIC FLOW
- STAGE CONSTRUCTION
- TEMPORARY WIDENING / PAVEMENT

NOTE:
CONTRACTOR SHALL MAINTAIN ACCESS TO ENTRANCES AND SIDE ROADS AT ALL TIMES EXCEPT AS NOTED TO BE CLOSED.

REVISIONS	
NAME	DATE

ILLINOIS DEPARTMENT OF TRANSPORTATION
**MAINTENANCE OF TRAFFIC
STAGE 1 PLAINFIELD ROAD
STA 188+00 TO STA 198+00**
SCALE: 1"=50'
DATE: 7/3/2012
DRAWN BY: [blank]
CHECKED BY: RG

IE PROJ: 66420
PLOT DATE: 7/3/2012
FILE NAME: G:\311\66420\CADD\11\1103-1.dwg