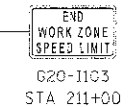
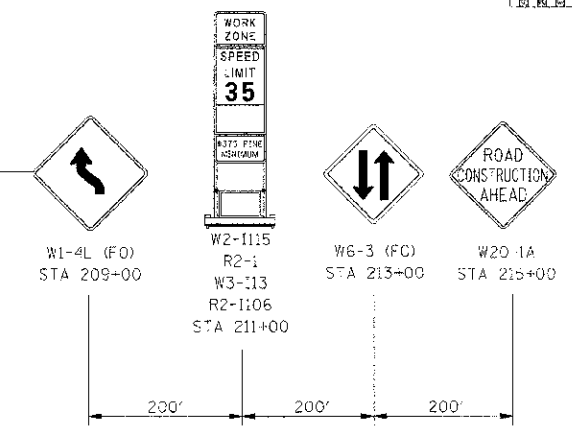
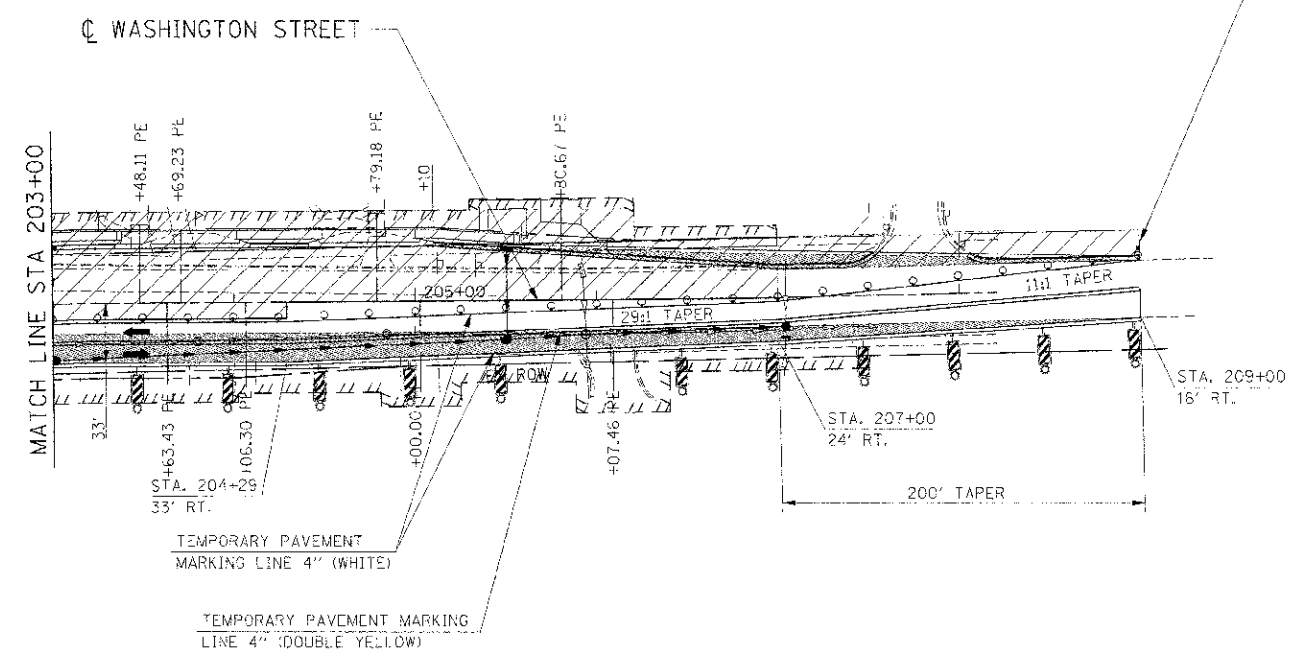
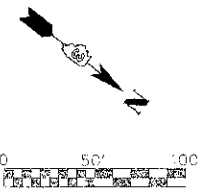


F.A.P. RTE.	SECTION	COUNTY	TOTAL SHEETS	SHEET NO.
311	(1-1) R	KENDALL	514	160
STA. 185+00		TO STA. 198+25		
FED. ROAD DIST. NO.		ILLINOIS FED. AID PROJECT		



- LEGEND**
- DRUM
 - VERTICAL PANEL
 - TYPE III BARRICADE
 - TRAFFIC FLOW
 - STAGE CONSTRUCTION
 - TEMPORARY WIDENING / PAVEMENT

NOTE:
 CONTRACTOR SHALL MAINTAIN ACCESS TO ENTRANCES AND SIDE ROADS AT ALL TIMES EXCEPT AS NOTED TO BE CLOSED.

REVISIONS	
NAME	DATE

ILLINOIS DEPARTMENT OF TRANSPORTATION
**MAINTENANCE OF TRAFFIC
 STAGE 1 WASHINGTON ST
 STA 203+00 TO STA 209+00**
 SCALE: 1"=50'
 DATE 7/3/2012
 DRAWN BY
 CHECKED BY RC

IE PROJ: 66420
 PLOT DATE: 7/3/2012
 FILE NAME: G:\S\66420\1171\HOT_1122.SHT