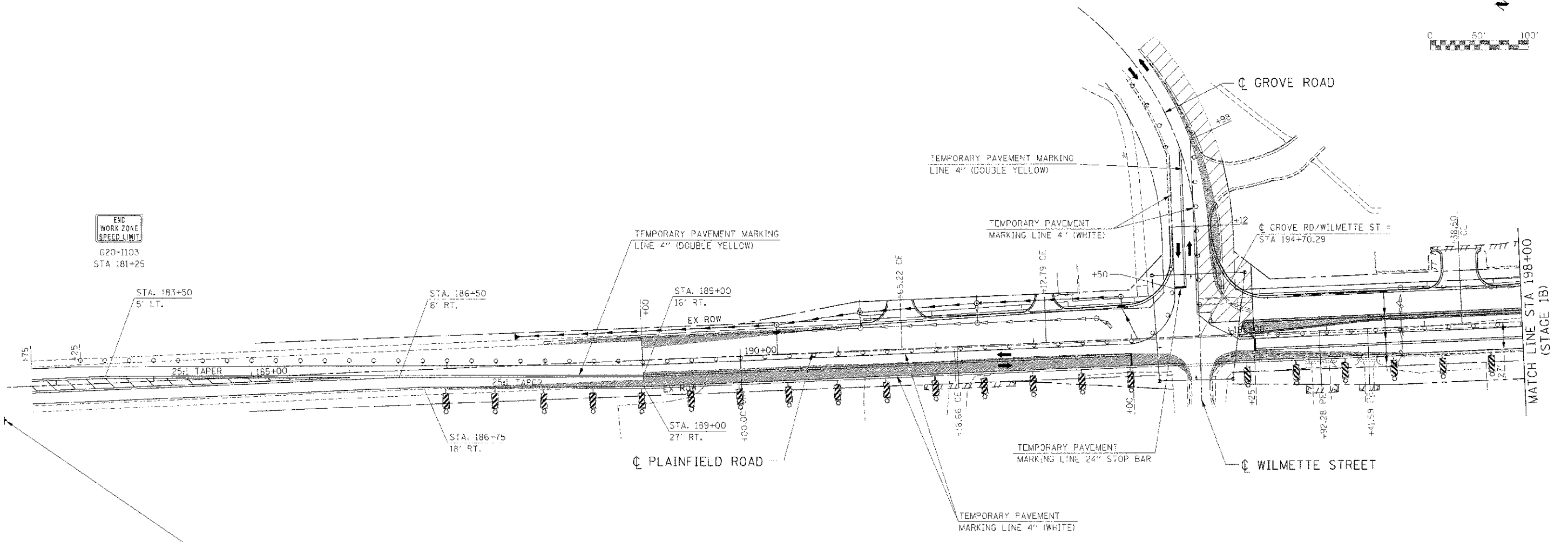
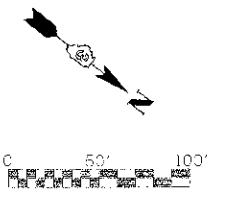
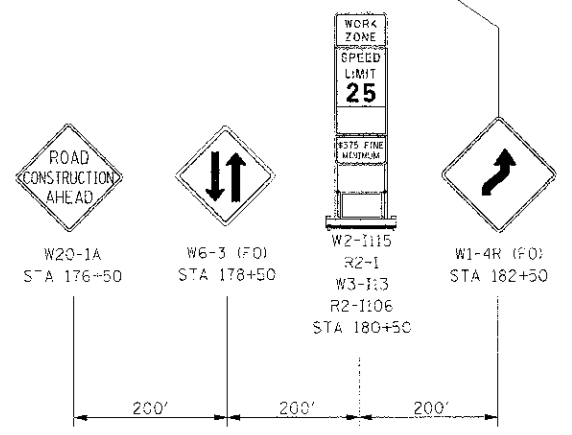


F.A.P. RTF.	SECTION	COUNTY	TOTAL SHEETS	SHEET NO.
311	(1) (1) R	KENDALL	514	169
STA. 189+00		TO STA. 198+25		
FED. ROAD DIST. NO. ILLINOIS FED. AID PROJECT				



END WORK ZONE SPEED LIMIT
G20-1103
STA 181+25



LEGEND

- DRUM
- VERTICAL PANEL
- TYPE III BARRICADE
- TRAFFIC FLOW
- STAGE CONSTRUCTION
- TEMPORARY WIDENING / PAVEMENT

NOTE:
CONTRACTOR SHALL MAINTAIN ACCESS TO ENTRANCES AND SIDE ROADS AT ALL TIMES EXCEPT AS NOTED TO BE CLOSED.

REVISIONS	
NAME	DATE

ILLINOIS DEPARTMENT OF TRANSPORTATION
**MAINTENANCE OF TRAFFIC
STAGE 1B PLAINFIELD ROAD
STA 188+00 TO STA 198+00**
SCALE: 1"=50'
DATE: 7/3/2012
DRAWN BY: _____
CHECKED BY: RG

IE PROJ: 66420
PL07.DWG
FILE NAME: G:\550605\05\010\11\7\10\11\B_215.rvt