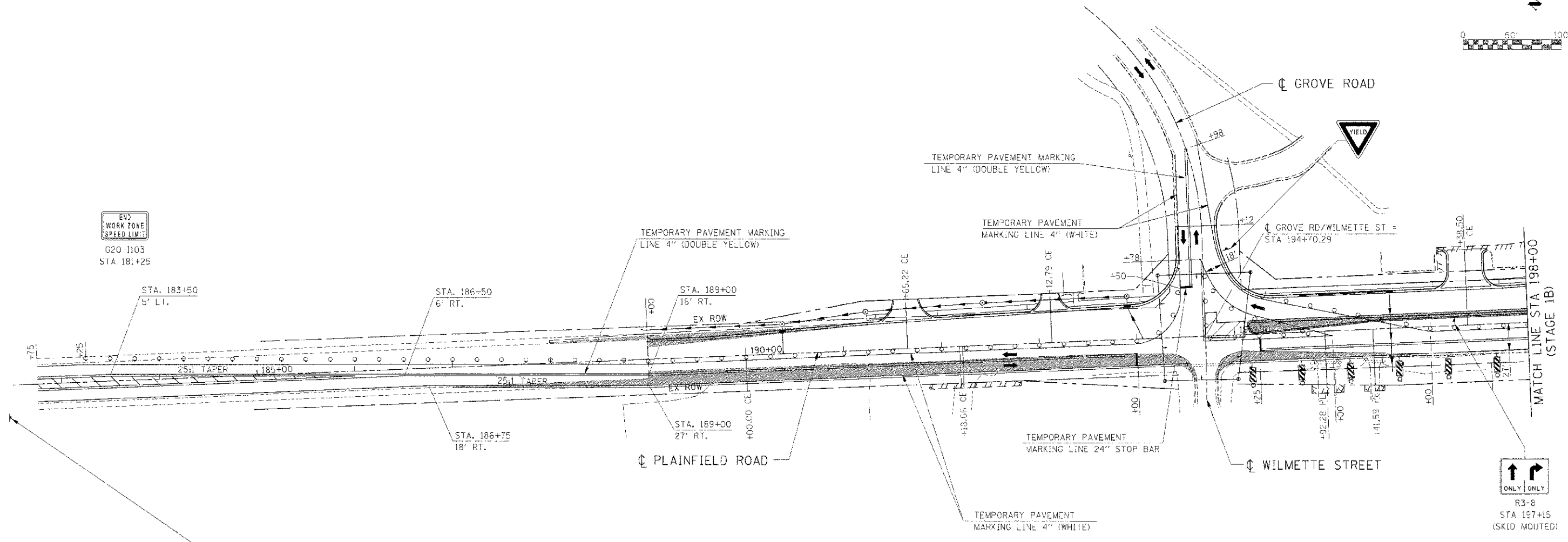
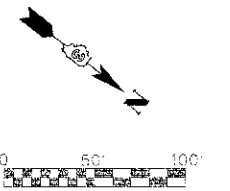
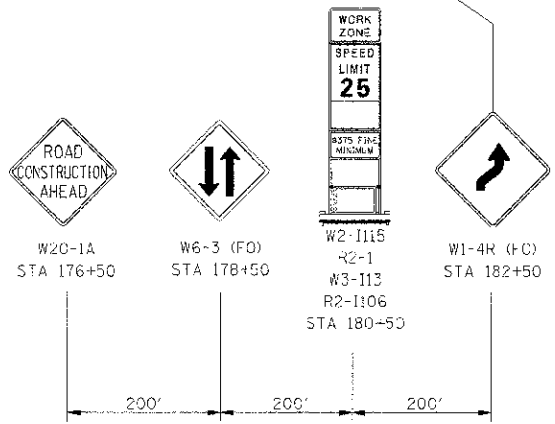


P.A. RTE.	SECTION	COUNTY	TOTAL SHEETS	SHEET NO.
311	1-1 R	KENDALL	514	171
STA. 188+00 TO STA. 198+25			TC STA. 198+25	
ILLINOIS FED. AID PROJECT				



EWS
WORK ZONE
SPEED LIMIT
G20-1103
STA 181+25

R3-8
STA 187+15
(SKID MOUNTED)



LEGEND

- DRUM
- VERTICAL PANEL
- TYPE III BARRICADE
- TRAFFIC FLOW
- STAGE CONSTRUCTION
- TEMPORARY WIDENING / PAVEMENT

NOTE:
CONTRACTOR SHALL MAINTAIN ACCESS TO ENTRANCES AND SIDE ROADS AT ALL TIMES EXCEPT AS NOTED TO BE CLOSED.

REVISIONS	
NAME	DATE

ILLINOIS DEPARTMENT OF TRANSPORTATION

**MAINTENANCE OF TRAFFIC
STAGE 1C PLAINFIELD ROAD
STA 188+00 TO STA 198+00**

SCALE: 1"=50'
DATE: 11/5/2012
DRAWN BY: _____
CHECKED BY: RC

I.E. CONSULTANTS, INC. PROJECT: 66420
 FILE NAME: G:\66420\66420.DWG
 FILE DATE: 11/5/2012 10:11:11 AM