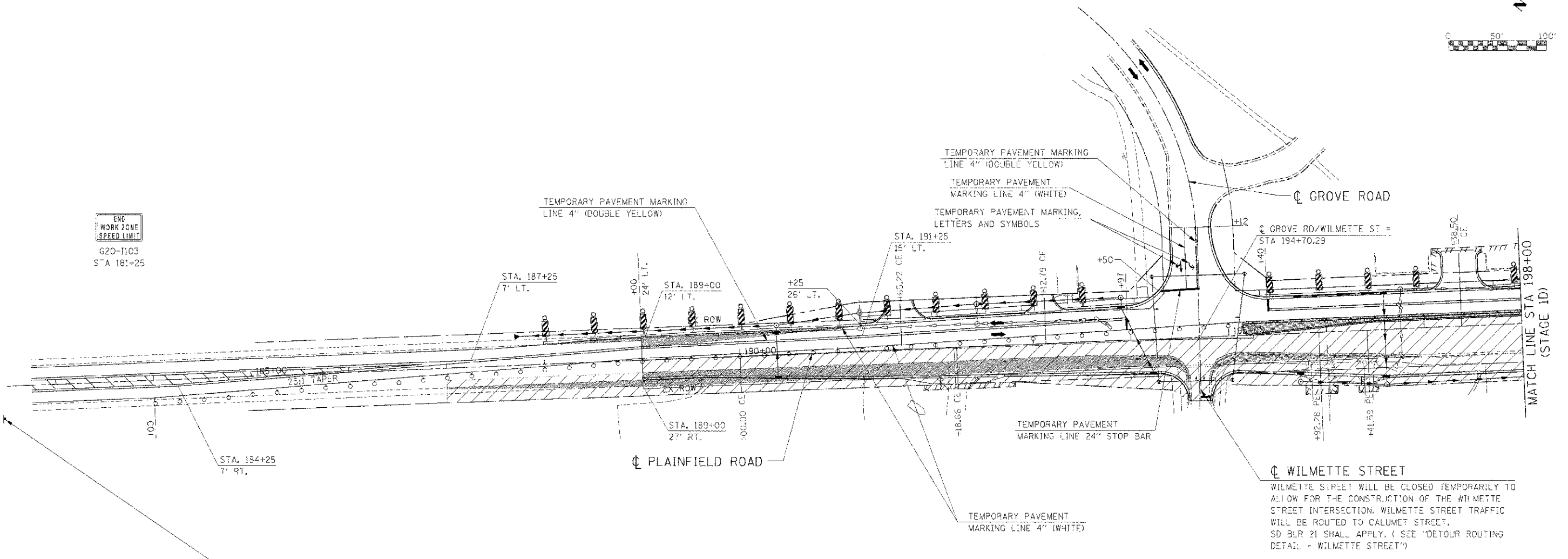
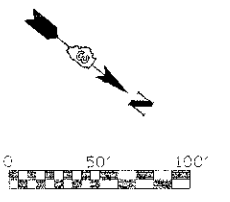
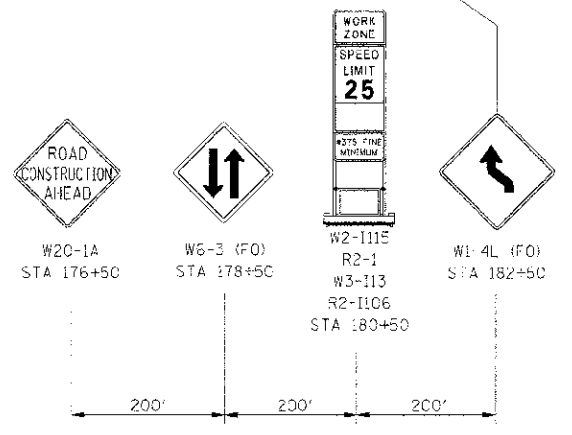


| F.A.P. RTE. | SECTION | COUNTY | TOTAL SHEETS | SHEET NO. |
|----------------------------|---------|---------------------------|--------------|-----------|
| 311 | (1-D) R | KENDALL | 514 | 173 |
| STA. 188+00 TO STA. 198+25 | | ILLINOIS FED. AID PROJECT | | |



END WORK ZONE SPEED LIMIT
G20-1103
STA 181+25

WILMETTE STREET WILL BE CLOSED TEMPORARILY TO ALLOW FOR THE CONSTRUCTION OF THE WILMETTE STREET INTERSECTION. WILMETTE STREET TRAFFIC WILL BE ROUTED TO CALUMET STREET. SD BLP 21 SHALL APPLY. (SEE "DETOUR ROUTING DETAIL - WILMETTE STREET")



LEGEND

- DRUM
- VERTICAL PANEL
- TYPE III BARRICADE
- TRAFFIC FLOW
- STAGE CONSTRUCTION
- TEMPORARY WIDENING / PAVEMENT

NOTE:
CONTRACTOR SHALL MAINTAIN ACCESS TO ENTRANCES AND SIDE ROADS AT ALL TIMES EXCEPT AS NOTED TO BE CLOSED.

| REVISIONS | |
|-----------|------|
| NAME | DATE |
| | |
| | |
| | |
| | |
| | |
| | |
| | |
| | |
| | |
| | |

ILLINOIS DEPARTMENT OF TRANSPORTATION
**MAINTENANCE OF TRAFFIC
STAGE 1D PLAINFIELD ROAD
STA 188+00 TO STA 198+00**
SCALE: 1"=50'
DATE: 7/3/2012
DRAWN BY:
CHECKED BY: RG

IE PROJ: 66420
 PLOT DATE: 7/3/2012
 FILE NAME: G:\ASSETS\66420\171\171.DWG