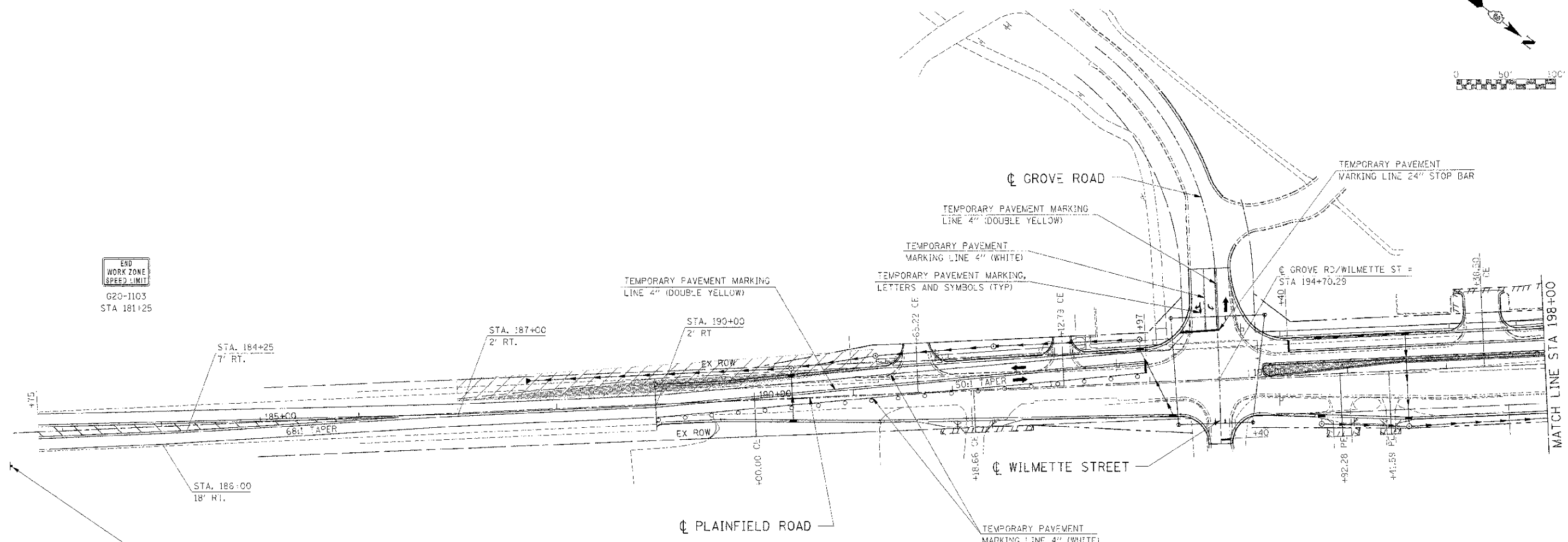
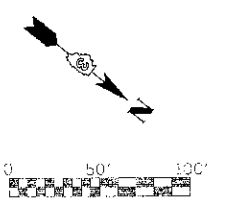
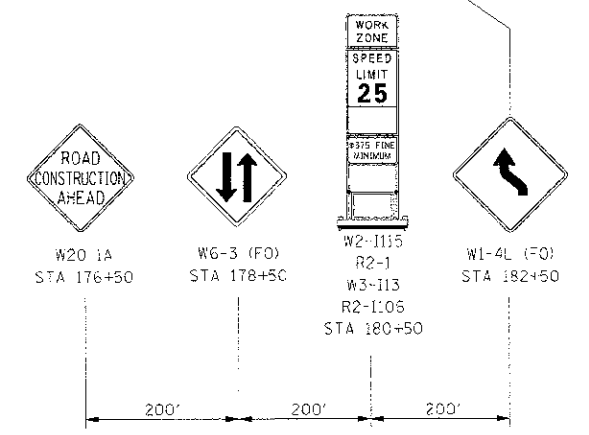


R.A.P. RTE.	SECTION	COUNTY	TOTAL SHEETS	SHEET NO.
311	(1-3) R	KENDALL	514	186
STA. 193+00 TO STA. 198+25				
FED. ROAD DIST. NO.		ILLINOIS FED. AID PROJECT		



E90
WORK ZONE
SPEED LIMIT
G20-1103
STA 181+25



LEGEND

- DRUM
- VERTICAL PANEL
- TYPE III BARRICADE
- TRAFFIC FLOW
- STAGE CONSTRUCTION
- TEMPORARY WIDENING / PAVEMENT

REVISIONS	
NAME	DATE

NOTE:
CONTRACTOR SHALL MAINTAIN ACCESS TO ENTRANCES AND SIDE ROADS AT ALL TIMES EXCEPT AS NOTED TO BE CLOSED.

ILLINOIS DEPARTMENT OF TRANSPORTATION
**MAINTENANCE OF TRAFFIC
STAGE 2 PLAINFIELD ROAD
STA 188+00 TO STA 198+00**
SCALE: 1"=50'
DATE: 7/3/2012
DRAWN BY: _____
CHECKED BY: R0

IE PROJ: SPR09/5
PL01 DATE: 7/3/2012
FILE NAME: G:\56565\CAD\311\MOT-2-21.BHT