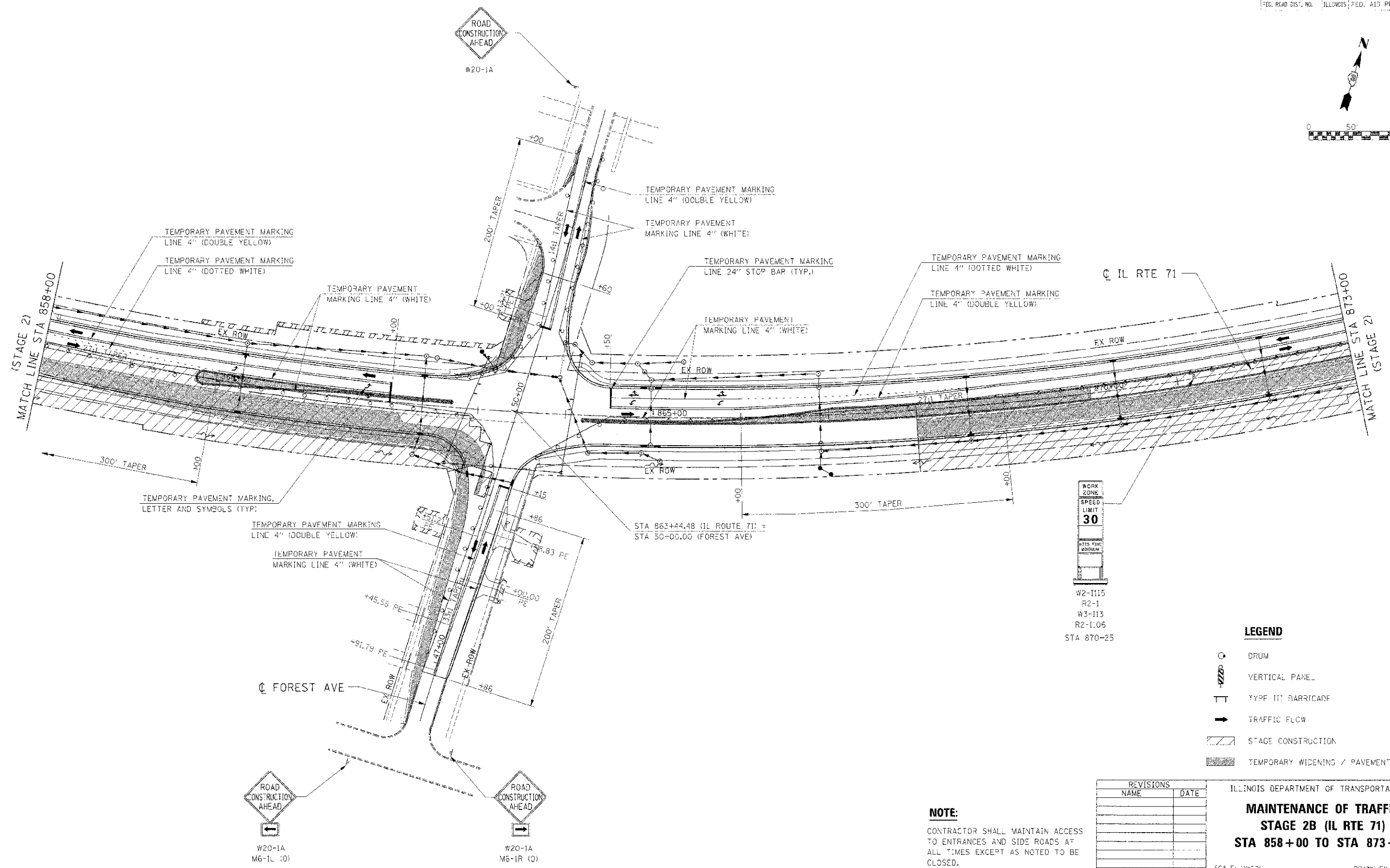
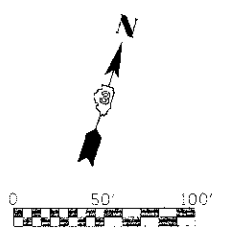


STATE	SECTION	COUNTY	TOTAL SHEETS	SHEET NO.
ILL.	11-D R	KENDALL	514	189
STA. 858+00	70 STA.	873+00		
FED. ROAD DIST. NO. ILLINOIS FED. AID PROJECT				



**LEGEND**

- DRUM
- VERTICAL PANEL
- TYPE III BARRICADE
- TRAFFIC FLOW
- STAGE CONSTRUCTION
- TEMPORARY WIDENING / PAVEMENT

REVISIONS	
NAME	DATE

ILLINOIS DEPARTMENT OF TRANSPORTATION  
**MAINTENANCE OF TRAFFIC**  
**STAGE 2B (IL RTE 71)**  
**STA 858+00 TO STA 873+00**

SCALE: 1"=50'  
 DATE: 7/3/2012

DRAWN BY: AAD  
 CHECKED BY: RG

**NOTE:**  
 CONTRACTOR SHALL MAINTAIN ACCESS TO ENTRANCES AND SIDE ROADS AT ALL TIMES EXCEPT AS NOTED TO BE CLOSED.

IE PROJ. 0905025  
 PLOT DATE: 7/3/2012  
 FILE NAME: G:\905025\905025.DWG