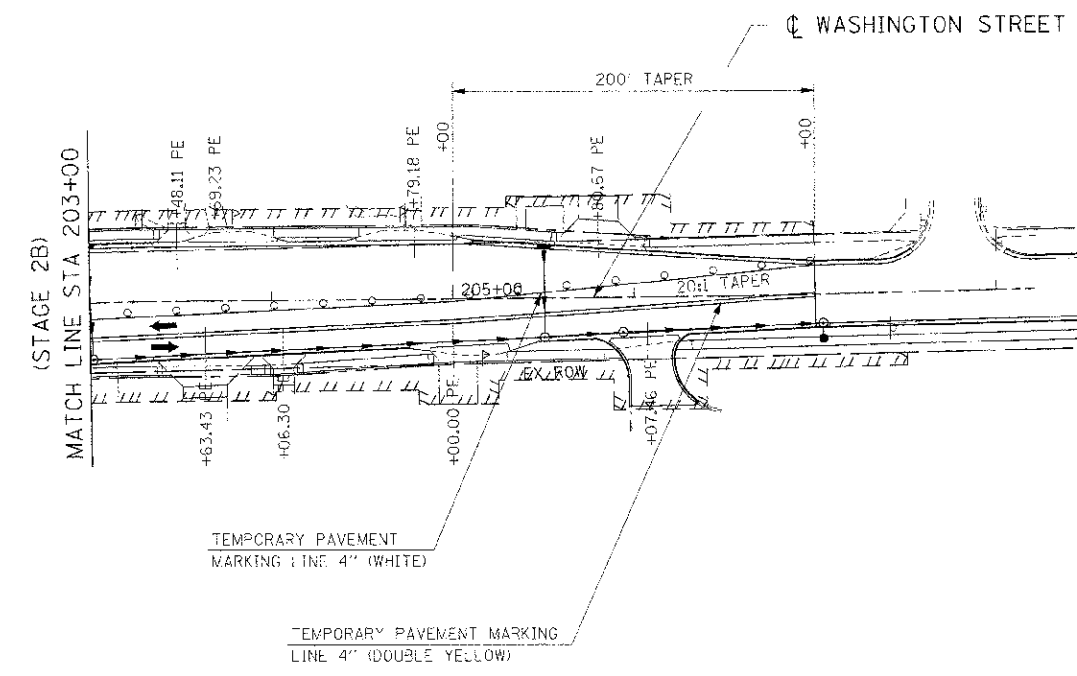
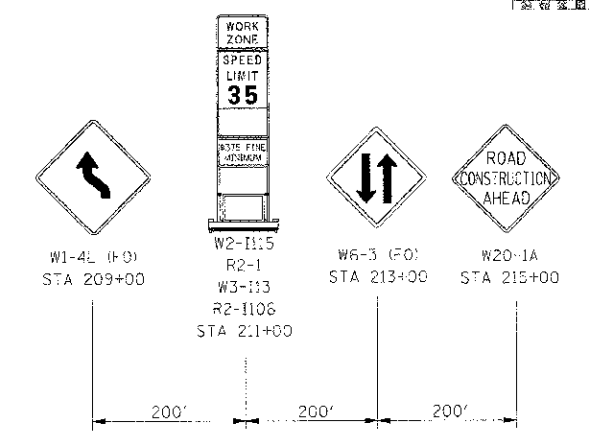
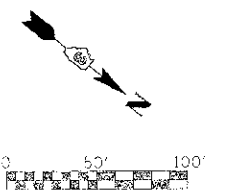


F.A.P. RTE.	SECTION	COUNTY	TOTAL SHEETS	SHEET NO.
311	(1-1) R	KENDALL	514	195
STA. 188+00		TO STA. 198+25		
FED. ROAD DIST. NO.		ILLINOIS		FED. AID PROJECT



**LEGEND**

- DRUM
- VERTICAL PANEL
- TYPE III BARRICADE
- TRAFFIC FLOW
- STAGE CONSTRUCTION
- TEMPORARY WIDENING / PAVEMENT

**NOTE:**

CONTRACTOR SHALL MAINTAIN ACCESS TO ENTRANCES AND SIDE ROADS AT ALL TIMES EXCEPT AS NOTED TO BE CLOSED.

REVISIONS	
NAME	DATE

ILLINOIS DEPARTMENT OF TRANSPORTATION

**MAINTENANCE OF TRAFFIC  
STAGE 2B WASHINGTON ST  
STA 203+00 TO STA 209+00**

SCALE: 1"=50'  
DATE: 1/3/2012

DRAWN BY:  
CHECKED BY: RG

IE PROJ: 66420  
 PLOT DATE: 1/3/2012  
 FILE NAME: G:\ASB625\GAD\171\NOT.20.22.21F