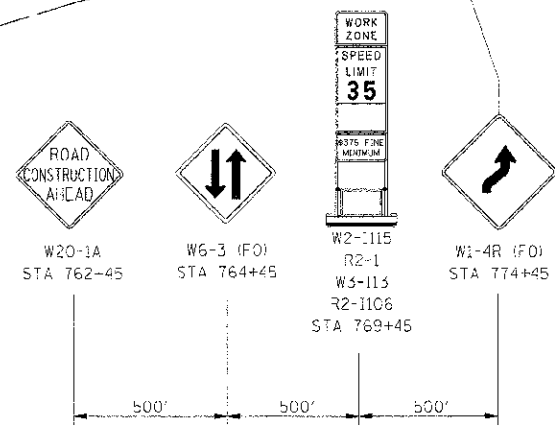
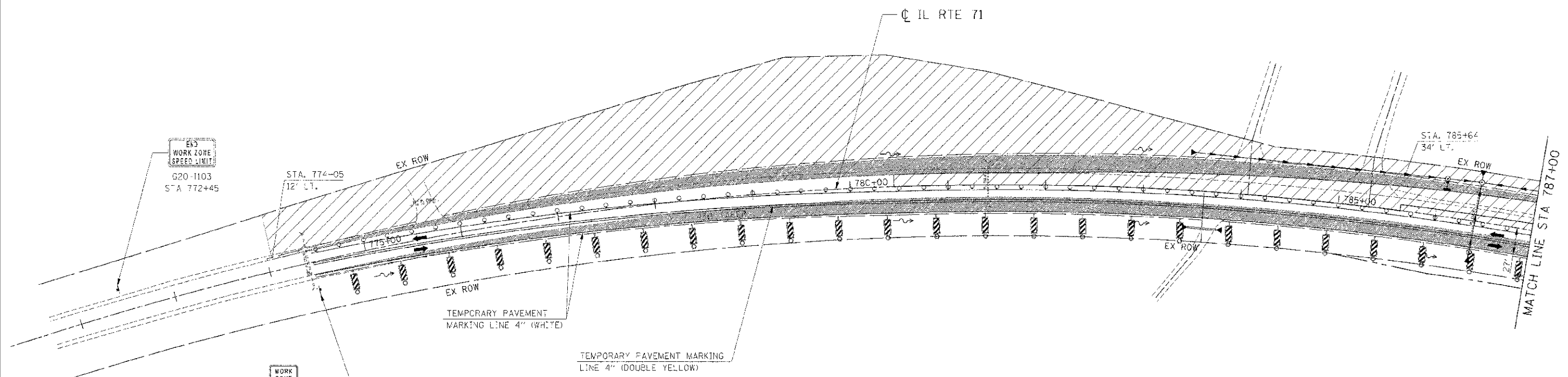
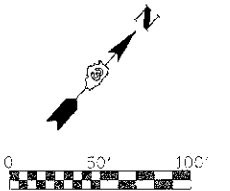


F.A.P. NO.	SECTION	COUNTY	TOTAL SHEETS	SHEET NO.
311	(1) R	KENDALL	514	210
STA. 771+70.50		TO STA. 787+00		
FED. ROAD DIST. NO.		ILLINOIS FED. AID PROJECT		



**LEGEND**

- DRUM
- VERTICAL PANEL
- TYPE II BARRICADE
- TRAFFIC FLOW
- STAGE CONSTRUCTION
- TEMPORARY WIDENING / PAVEMENT

**NOTE:**  
 CONTRACTOR SHALL MAINTAIN ACCESS TO ENTRANCES AND SIDE ROADS AT ALL TIMES EXCEPT AS NOTED TO BE CLOSED.

REVISIONS	
NAME	DATE

ILLINOIS DEPARTMENT OF TRANSPORTATION  
**MAINTENANCE OF TRAFFIC**  
**STAGE 4 (IL RTE 71)**  
**STA 771+70.50 TO STA 787+00**  
 SCALE: 1"=50'  
 DATE: 7/3/2012  
 DRAWN BY: AAD  
 CHECKED BY: RG

IE PROJ: 66420  
 PLOT DATE: 7/3/2012  
 FILE NAME: G:\66420\CD\NL11.PLOT\_4.BUSK1