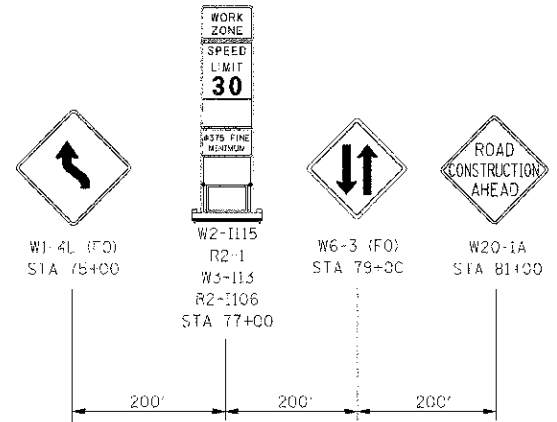
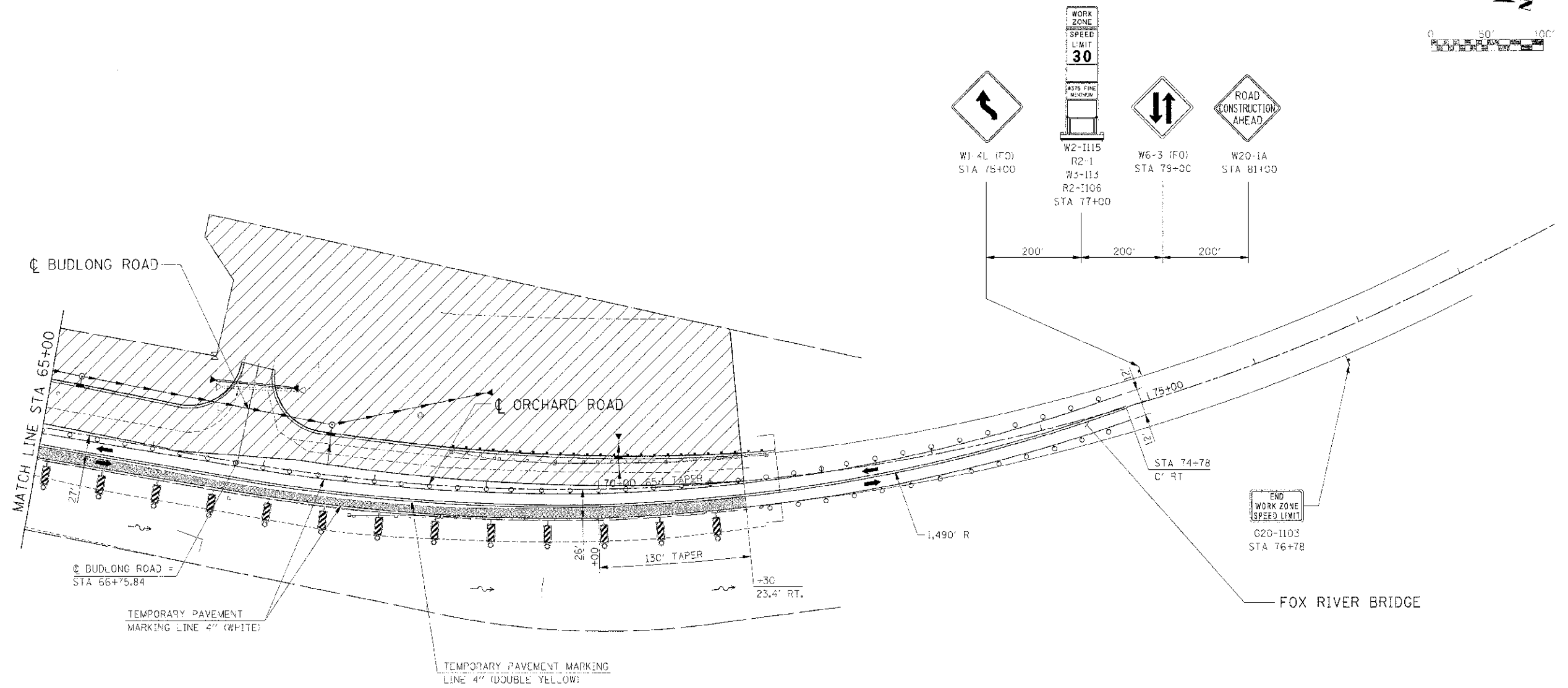
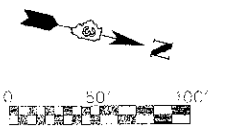


F.A.P. RTEL	SECTION	COUNTY	TOTAL SHEETS	SHEET NO.
31	(2-1) R	KENDALL	514	213
STA. 65+00		TO STA. 78+00		
FED. ROAD DIST. NO. ILLINOIS FED. AID PROJECT				



**LEGEND**

- DRAW
- VERTICAL PANEL
- TYPE III BARRICADE
- TRAFFIC FLOW
- STAGE CONSTRUCTION
- TEMPORARY WIDENING / PAVEMENT

**NOTE:**  
CONTRACTOR SHALL MAINTAIN ACCESS TO ENTRANCES AND SIDE ROADS AT ALL TIMES EXCEPT AS NOTED TO BE CLOSED.

REVISIONS	
NAME	DATE

ILLINOIS DEPARTMENT OF TRANSPORTATION

**MAINTENANCE OF TRAFFIC  
STAGE 4 ORCHARD ROAD  
STA 65+00 TO STA 78+00**

SCALE: 1"=50'  
DATE: 7/3/2012

DRAWN BY:  
CHECKED BY: RG

IE PROJ: 080625  
 CT DATE: 7/3/2012  
 FILE NAME: G:\SRP\080625\CAD\171\_P01\_4\_20.dwg