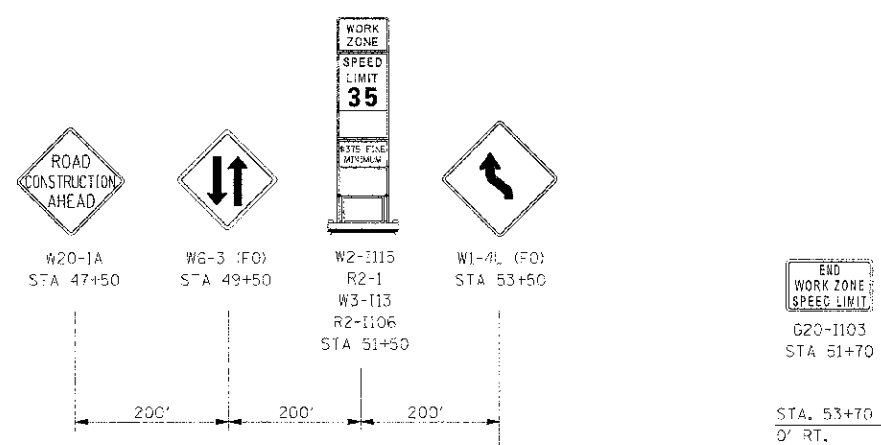
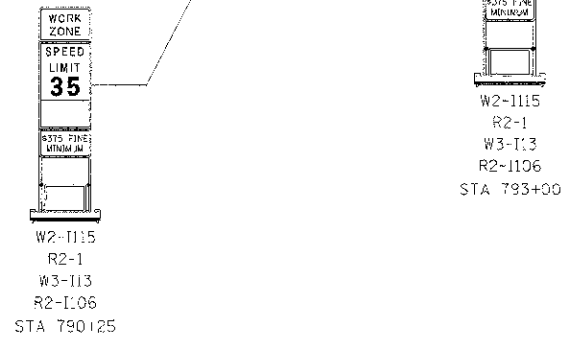
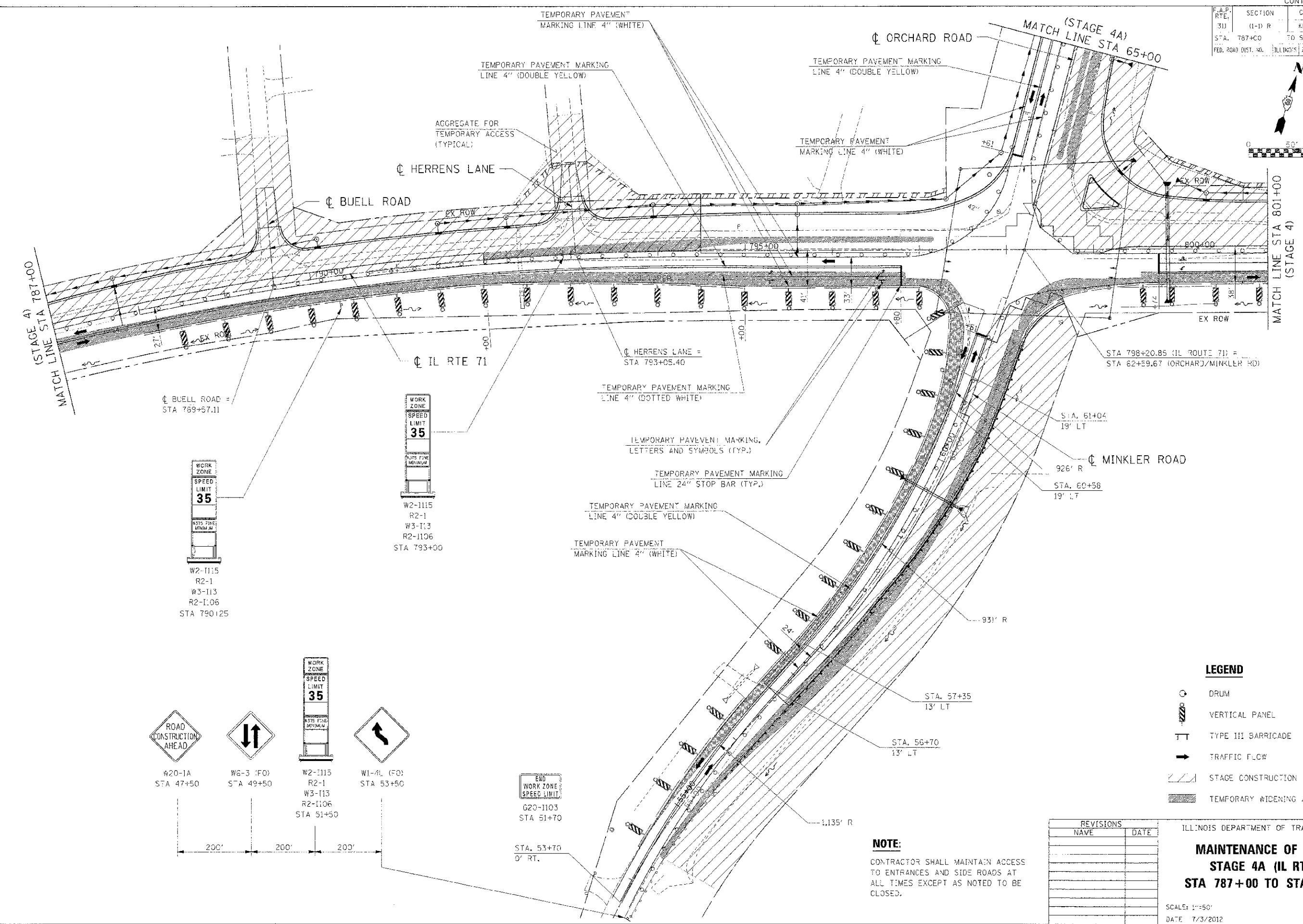
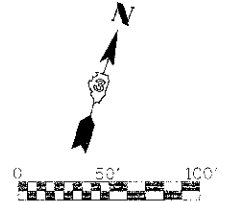


F.A.P. NO.	SECTION	COUNTY	TOTAL SHEETS	SHEET NO.
311	(1-D) R	KENDALL	514	214
STA. 787+00	TO STA. 801+00			
FED. ROAD DIST. NO.	ILLINOIS	FED. AID PROJECT		



LEGEND

- DRUM
- VERTICAL PANEL
- TYPE III BARRICADE
- TRAFFIC FLOW
- STAGE CONSTRUCTION
- TEMPORARY WIDENING / PAVEMENT

REVISIONS	
NAME	DATE

ILLINOIS DEPARTMENT OF TRANSPORTATION
MAINTENANCE OF TRAFFIC
STAGE 4A (IL RTE 71)
STA 787+00 TO STA 801+00

SCALE: 1"=50'
 DATE: 7/3/2012

DRAWN BY: _____
 CHECKED BY: RG

NOTE:
 CONTRACTOR SHALL MAINTAIN ACCESS TO ENTRANCES AND SIDE ROADS AT ALL TIMES EXCEPT AS NOTED TO BE CLOSED.

IE PROJ. #595625
 PLOT DATE: 7/3/2012
 FILE NAME: G:\311625\DRAWING\71.MDI, 44, 02.DWT