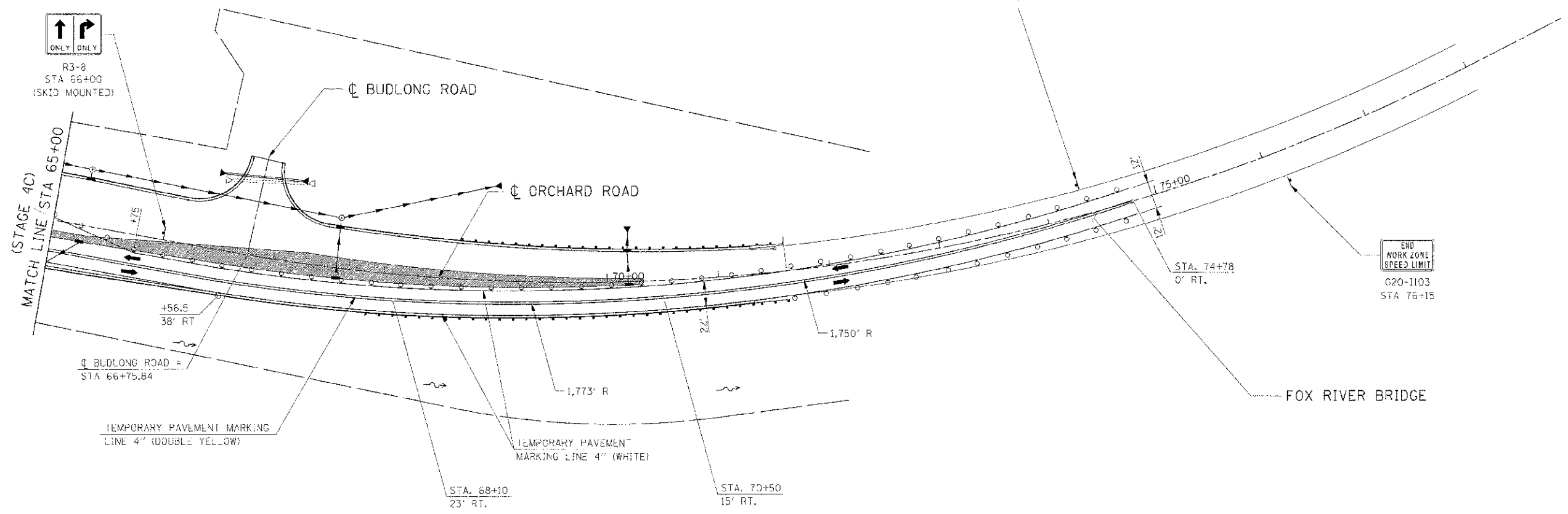
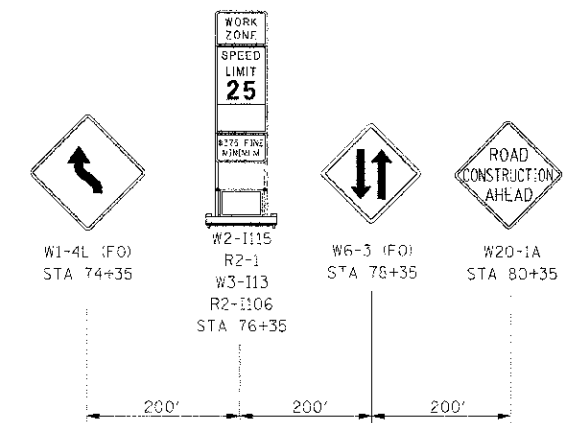
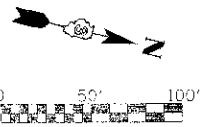


F.A.P.1	SECTION	COUNTY	TOTAL SHEETS	SHEET NO.
311	(1-1) R	KENDALL	314	220
STA. 65+00		TO STA.		78+00
FED. ROAD DIST. NO. ILLINOIS FED. AID PROJECT				



R3-8  
STA 66+00  
(SKID MOUNTED)



G20-1103  
STA 76+15

**LEGEND**

- DRJM
- VERTICAL PANEL
- TYPE III BARRICADE
- TRAFFIC FLOW
- STAGE CONSTRUCTION
- TEMPORARY WIDENING / PAVEMENT

REVISIONS	
NAME	DATE

ILLINOIS DEPARTMENT OF TRANSPORTATION

**MAINTENANCE OF TRAFFIC  
STAGE 4C ORCHARD ROAD  
STA 65+00 TO STA 78+00**

SCALE: 1"=50'  
DATE: 7/3/2012

DRAWN BY  
CHECKED BY: RG

**NOTE:**  
CONTRACTOR SHALL MAINTAIN ACCESS TO ENTRANCES AND SIDE ROADS AT ALL TIMES EXCEPT AS NOTED TO BE CLOSED.

IE P201L \*6299025  
 PLOT DATE = 7/17/2012  
 FILE NAME = R:\S\6627\CD\171\HOT\_4C\_2R.DWG