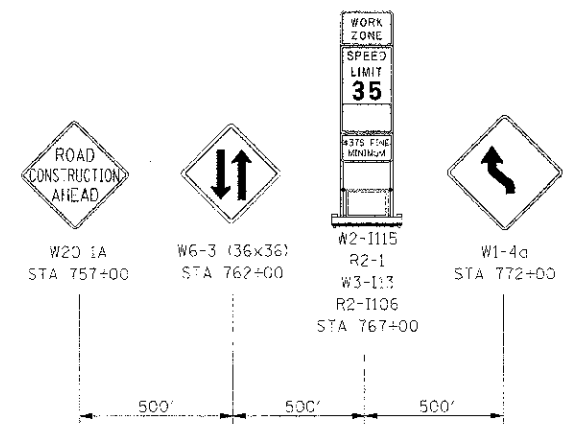
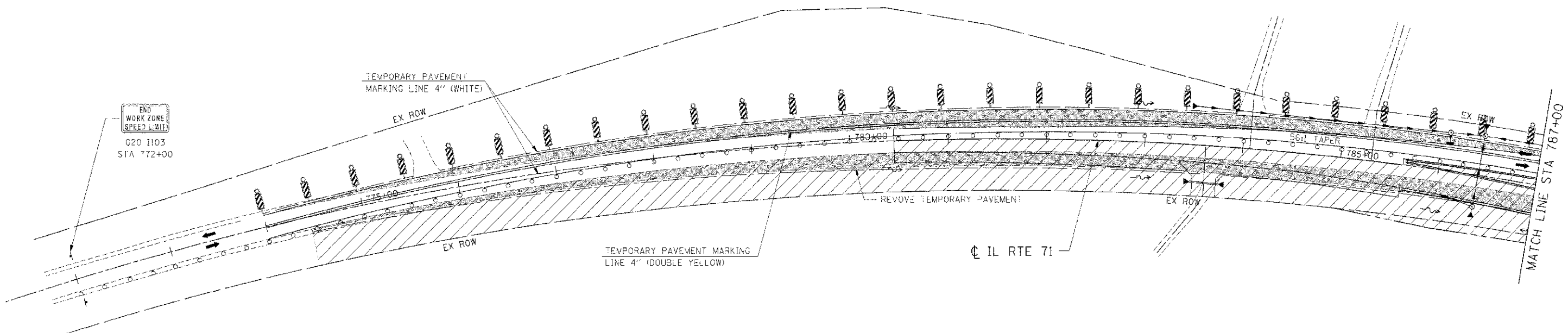
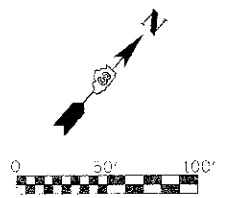


F.A. NO.	SECTION	COUNTY	TOTAL SHEETS	SHEET NO.
311	(1-1) R	KENDALL	514	221
STA. 771+70.50		TO STA. 787+00		
FED. ROAD DIST. NO.		ILLINOIS	FED. AID PROJECT	



LEGEND

- DRUM
- VERTICAL PANEL
- TYPE II BARRICADE
- TRAFFIC FLOW
- STAGE CONSTRUCTION
- TEMPORARY WIDENING / PAVEMENT

NOTE:
CONTRACTOR SHALL MAINTAIN ACCESS TO ENTRANCES AND SIDE ROADS AT ALL TIMES EXCEPT AS NOTED TO BE CLOSED.

REVISIONS	
NAME	DATE

ILLINOIS DEPARTMENT OF TRANSPORTATION
**MAINTENANCE OF TRAFFIC
STAGE 5 (IL RTE 71)
STA 771+70.50 TO STA 787+00**
SCALE: 1"=50'
DATE: 7/3/2012
DRAWN BY: AAC
CHECKED BY: RC

I.E. PROFILE: 0255025
 PLOT DATE: 7/3/2012
 FILE NAME: 664205025\040\1_71.MOT 8.PLSHT