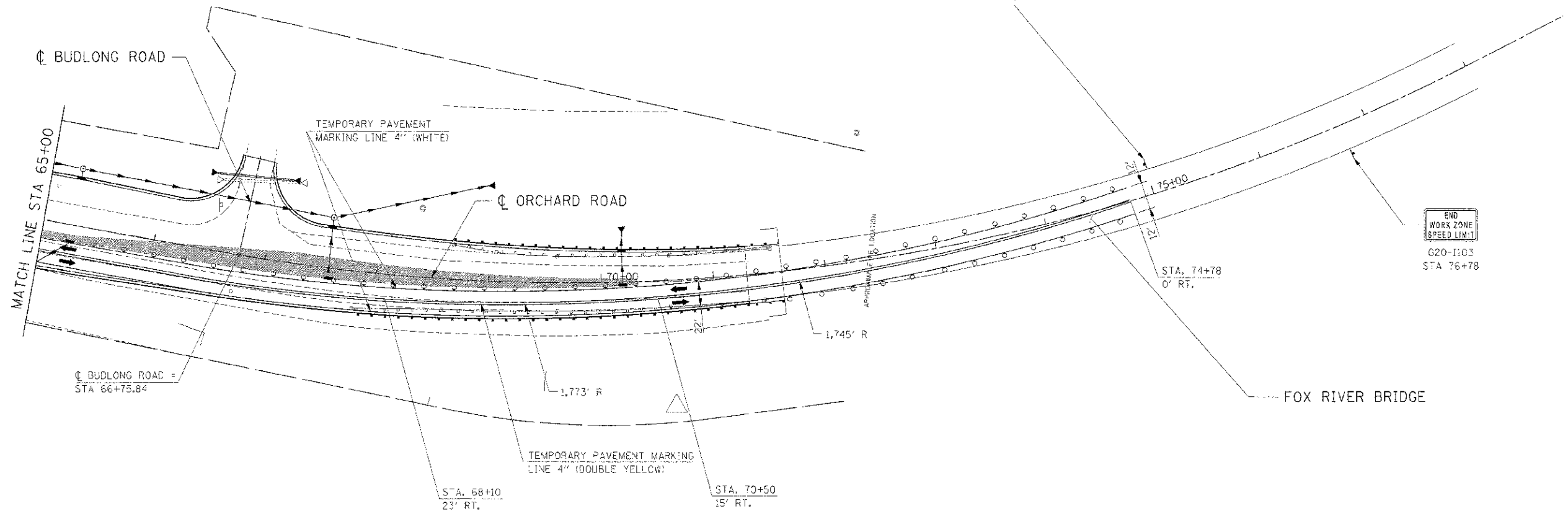
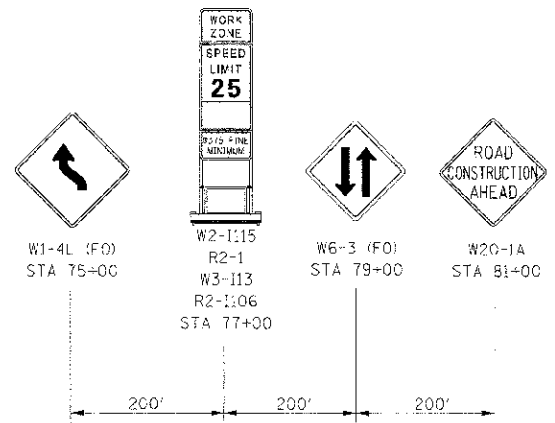
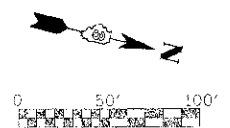


SECTION	COUNTY	TOTAL SHEETS	SHEET NO.
11-1: R	KENDALL	514	224
STA. 65+00 TO STA. 78+00		78+00	
FED. ROAD DIST. NO. ILLINOIS FED. AID PROJECT			



END WORK ZONE SPEED LIMIT
G20-1:03
STA 76+78

LEGEND

- DRUM
- VERTICAL PANEL
- TYPE III BARRICADE
- TRAFFIC FLOW
- STAGE CONSTRUCTION
- TEMPORARY WIDENING / PAVEMENT

NOTE:

CONTRACTOR SHALL MAINTAIN ACCESS TO ENTRANCES AND SIDE ROADS AT ALL TIMES EXCEPT AS NOTED TO BE CLOSED.

REVISIONS	
NAME	DATE

ILLINOIS DEPARTMENT OF TRANSPORTATION

**MAINTENANCE OF TRAFFIC
STAGE 5 ORCHARD ROAD
STA 65+00 TO STA 78+00**

SCALE: 1"=50'
DATE: 7/3/2012
DRAWN BY:
CHECKED BY: RG

IE PROJ: 66420
 PLOT DATE: 7/3/2012
 FILE NAME: C:\AS\66420\CAD\171\107_5.28.SHT