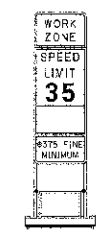
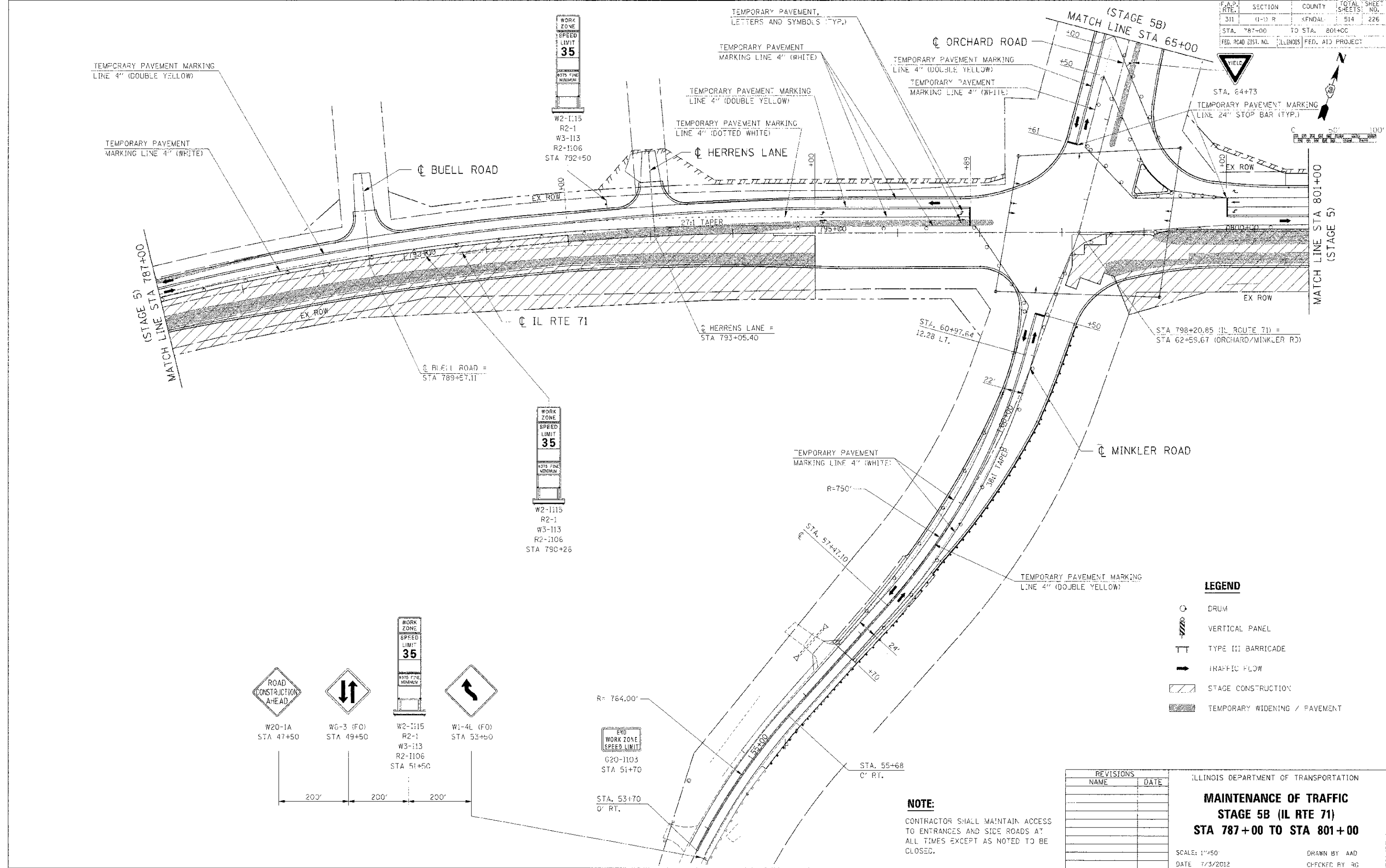


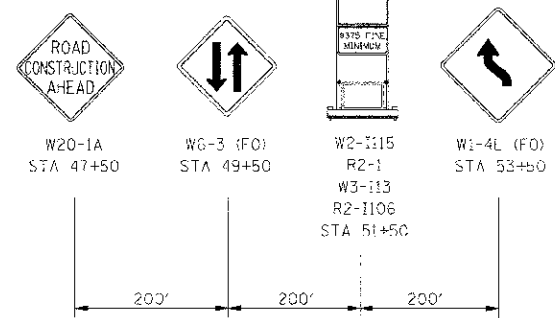
F.A.P. RTE.	SECTION	COUNTY	TOTAL SHEETS	SHEET NO.
311	(1-1) R	KENDAL	514	226
STA. 787+00 TO STA. 801+00		FED. ROAD DIST. NO. ILLINOIS FED. AID PROJECT		



W2-1115
R2-1
W3-1113
R2-1106
STA 792+50



W2-1115
R2-1
W3-1113
R2-1106
STA 790+26



LEGEND

- DRUM
- ▨ VERTICAL PANEL
- ⊥ TYPE III BARRICADE
- ➔ TRAFFIC FLOW
- ▨ STAGE CONSTRUCTION
- ▨ TEMPORARY WIDENING / PAVEMENT

REVISIONS

NAME	DATE

ILLINOIS DEPARTMENT OF TRANSPORTATION
MAINTENANCE OF TRAFFIC
STAGE 5B (IL RTE 71)
STA 787+00 TO STA 801+00

SCALE: 1"=50'
DATE: 7/3/2012
DRAWN BY: AAD
CHECKED BY: RG

NOTE:
CONTRACTOR SHALL MAINTAIN ACCESS TO ENTRANCES AND SIDE ROADS AT ALL TIMES EXCEPT AS NOTED TO BE CLOSED.

IE PROJ: 66420
 PLOT DATE: 7/3/2012
 PLOT NAME: C:\ASSETS\66420\G71.MCT.08.02.SHT