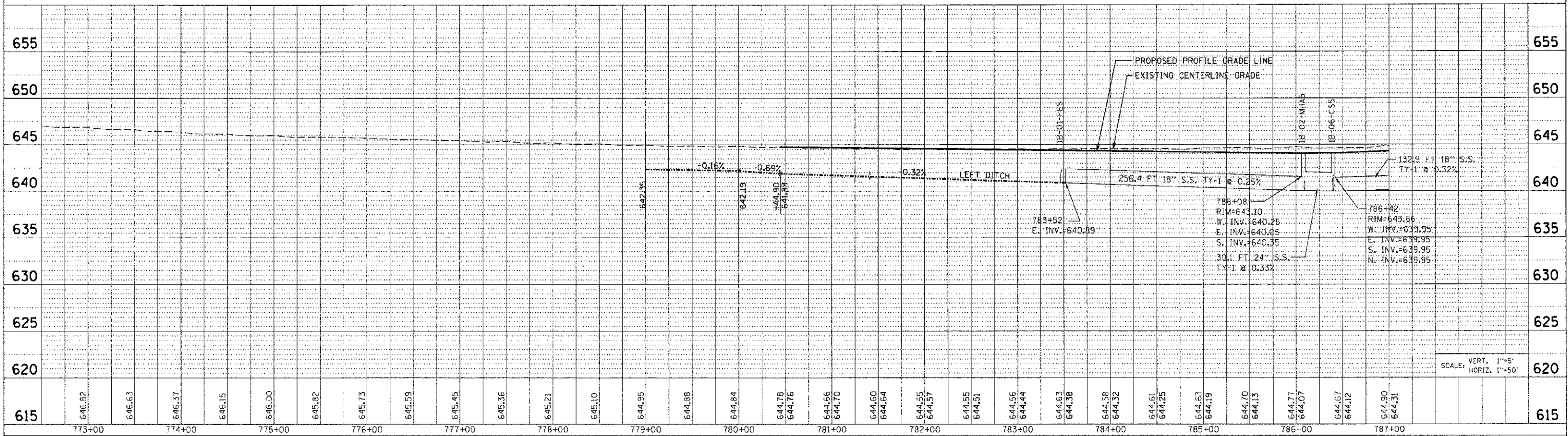
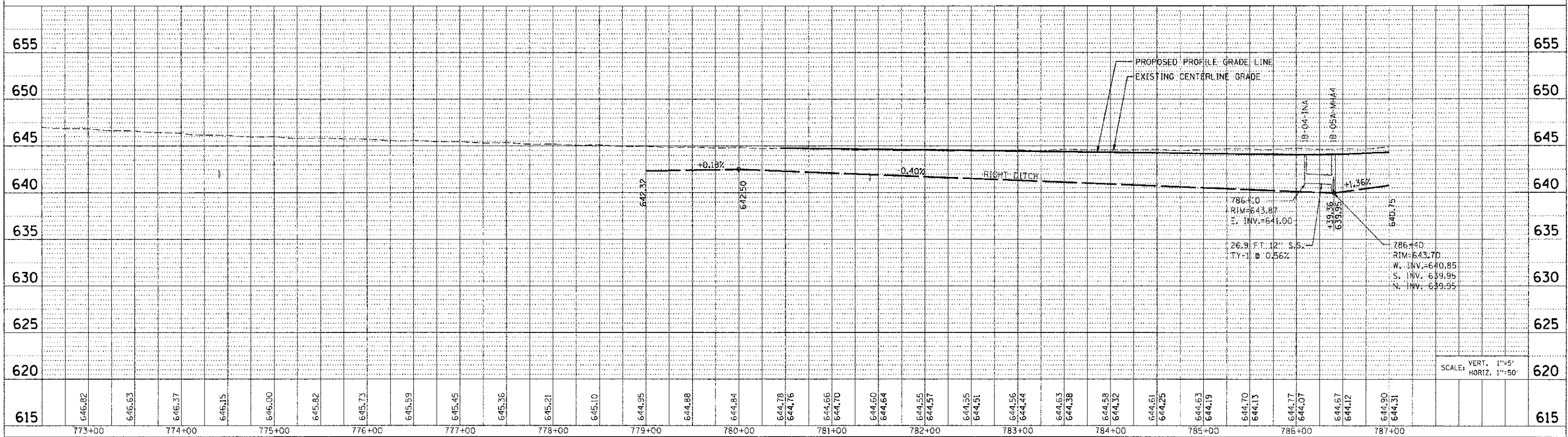


F.A. SECTION	COUNTY	TOTAL SHEETS
311 (1-1R)	KENDALI	54 246
STA. 774+45 TO STA. 787+00		
FED. ROAD DIST. NO.		ILLINOIS FED. AID PROJECT

LEFT SIDE STORM SEWER PROFILE



RIGHT SIDE STORM SEWER PROFILE



DATE	
BY	
PLAN	
DATE	
BY	
PLAN	
DATE	
BY	
PLAN	

DATE	
BY	
PROFILE	
DATE	
BY	
PROFILE	
DATE	
BY	
PROFILE	

PLOT DATE: 4/25/2012
 FILE NAME: p:\civil\1\job1.dwg
 PLOT SCALE: 1/8"=1'-0"
 USER NAME: JUSER