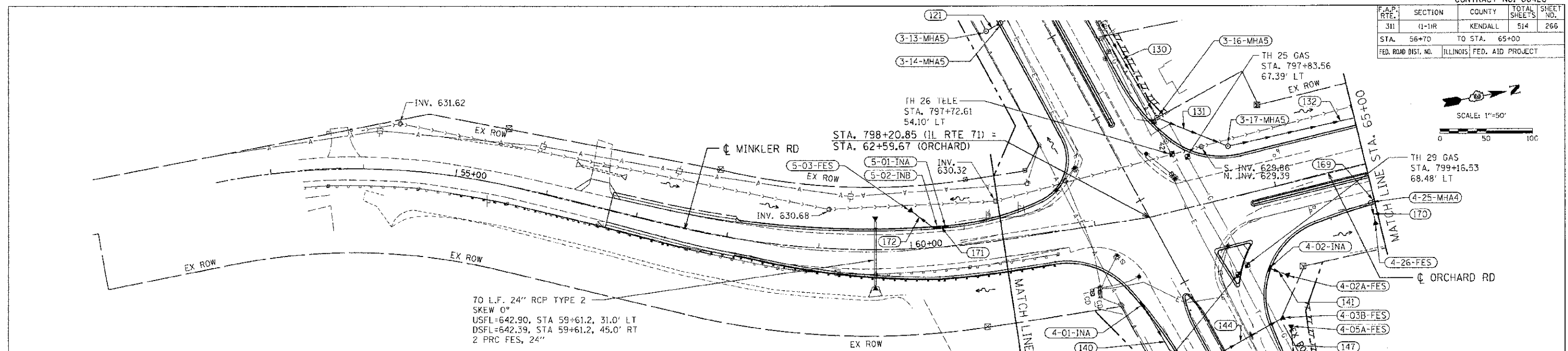
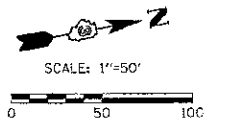


CONTRACT NO. 66420				
F.A.P. RTE.	SECTION	COUNTY	TOTAL SHEETS	SHEET NO.
311	(1-1R)	KENDALL	514	266
STA. 56+70	TO STA. 65+00			
FED. ROAD DIST. NO. ILLINOIS FED. AID PROJECT				

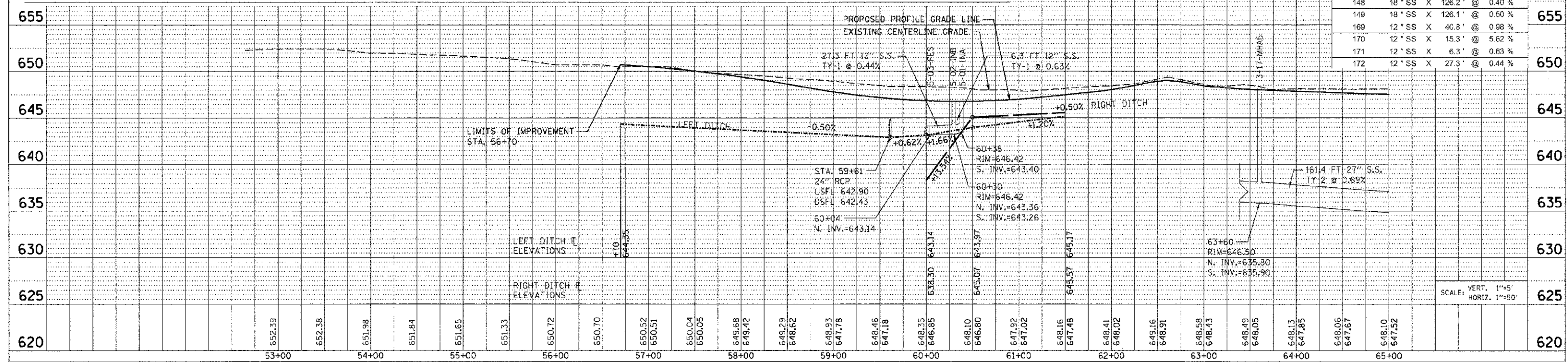


DRAINAGE STRUCTURE SCHEDULE

STRUCTURE NUMBER	STATION	OFFSET	ROUTE	STRUCTURE TYPE	CASTING	RIM ELEVATION	NORTH INVERT	SOUTH INVERT	EAST INVERT	WEST INVERT	COMMENTS
3-13-MH A	795+50.47	58.95' RT.		MANHOLE, TYPE A, 5' DIAMETER	TYPE 8 GRATE	645.10	638.16			638.28	
3-14-MH A	795+50.10	40.98' RT.		MANHOLE, TYPE A, 5' DIAMETER	TYPE 24 FRAME AND GRATE	647.29	638.06	638.16			
3-16-MH A	797+30.71	58.27' LT.		MANHOLE, TYPE A, 5' DIAMETER	TYPE 1 FRAME, CLOSED LID	647.40	636.49			638.49	
3-17-MH A	797+94.21	111.09' LT.		MANHOLE, TYPE A, 5' DIAMETER	TYPE 1 FRAME, CLOSED LID	646.50	635.80	635.90			
4-01-INA	798+99.68	50.64' RT.		INLET, TYPE A	TYPE 24 FRAME AND GRATE	648.48			646.00		
4-01A-FES	799+86.05	55.97' RT.		PRC FLARED END SECTION, 30 EQRS				644.11			
4-02-INA	799+30.39	87.03' LT.		INLET, TYPE A	TYPE 24 FRAME AND GRATE	647.25			644.25		
4-02A-FES	799+43.84	98.75' LT.		PRC FLARED END SECTION, 12				643.90			
4-02B-MH A	799+85.97	48.03' RT.		MANHOLE, TYPE A, 5' DIAMETER	TYPE 1 FRAME, CLOSED LID	648.90	644.08	644.08	644.58	644.58	
4-03-INA	800+29.58	41.00' RT.		INLET, TYPE A	TYPE 24 FRAME AND GRATE	649.20		646.40			
4-03A-MH A	800+29.58	50.99' RT.		MANHOLE, TYPE A, 4' DIAMETER	TYPE 1 FRAME, CLOSED LID	648.40	645.30		644.84	644.74	
4-03B-FES	799+84.77	70.81' LT.		PRC FLARED END SECTION, 30 EQRS			643.88				
4-04-INA	800+29.69	64.43' LT.		INLET, TYPE A	TYPE 24 FRAME AND GRATE	648.86	645.39				
4-05-MH A	800+29.65	83.99' LT.		MANHOLE, TYPE A, 4' DIAMETER	TYPE 1 FRAME, CLOSED LID	648.36		646.29	644.16	644.06	
4-05A-FES	800+00.75	76.70' LT.		PRC FLARED END SECTION, 18				643.90			
4-25-MH A	64+95.84	41.52' RT.	ORCHARD RD.	MANHOLE, TYPE A, 4' DIAMETER	TYPE 24 FRAME AND GRATE	647.63			643.63	643.63	
4-26-FES	64+95.37	60.92' RT.	ORCHARD RD.	PRC FLARED END SECTION, 12					643.63	642.77	
5-01-INA	60+38.36	20.00' LT.	MINKLER RD.	INLET, TYPE A	TYPE 24 FRAME AND GRATE	646.42		643.40			
5-02-INA	60+29.85	20.00' LT.	MINKLER RD.	INLET, TYPE B	TYPE 24 FRAME AND GRATE	646.42	643.36	643.26			
5-03-FES	60+04.01	38.78' LT.	MINKLER RD.	PRC FLARED END SECTION, 12			643.14				

STORM SEWER SCHEDULE

SEGMENT	SIZE	LENGTH	GRADE
121	27" SS X	10.5' @	0.29%
130	27" SS X	165.8' @	0.60%
131	27" SS X	77.6' @	0.76%
132	27" SS X	181.4' @	0.69%
140	12" SS X	83.3' @	0.50%
141	12" SS X	15.8' @	2.28%
142	12" SS X	6.0' @	1.67%
143	30" EQRS X	5.5' @	0.55%
144	30" EQRS X	116.4' @	0.17%
145	18" SS X	39.2' @	0.41%
146	12" SS X	5.6' @	1.79%
147	18" SS X	29.0' @	0.55%
148	18" SS X	126.2' @	0.40%
149	18" SS X	128.1' @	0.50%
169	12" SS X	40.8' @	0.98%
170	12" SS X	15.3' @	5.62%
171	12" SS X	6.3' @	0.63%
172	12" SS X	27.3' @	0.44%



TUG PROJ. #3102014
 PLOT DATE: 7/5/2012
 FILE NAME: p:\civil\11\inf\dm3\sum\mga\pbase\11\DWG-11.dgn