

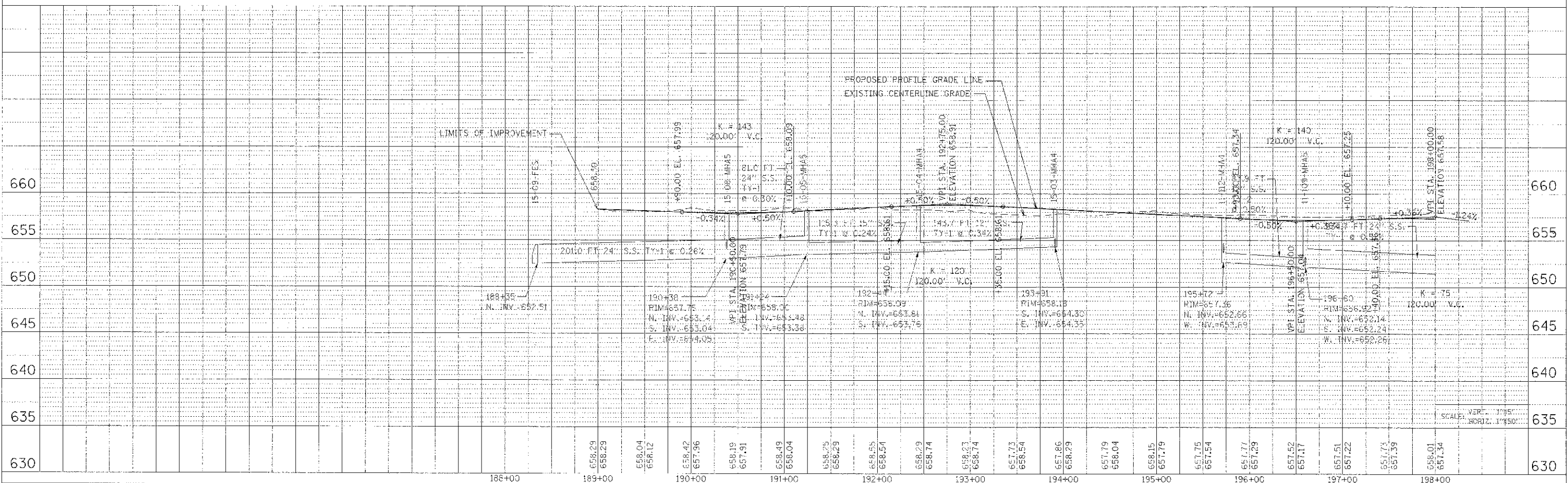
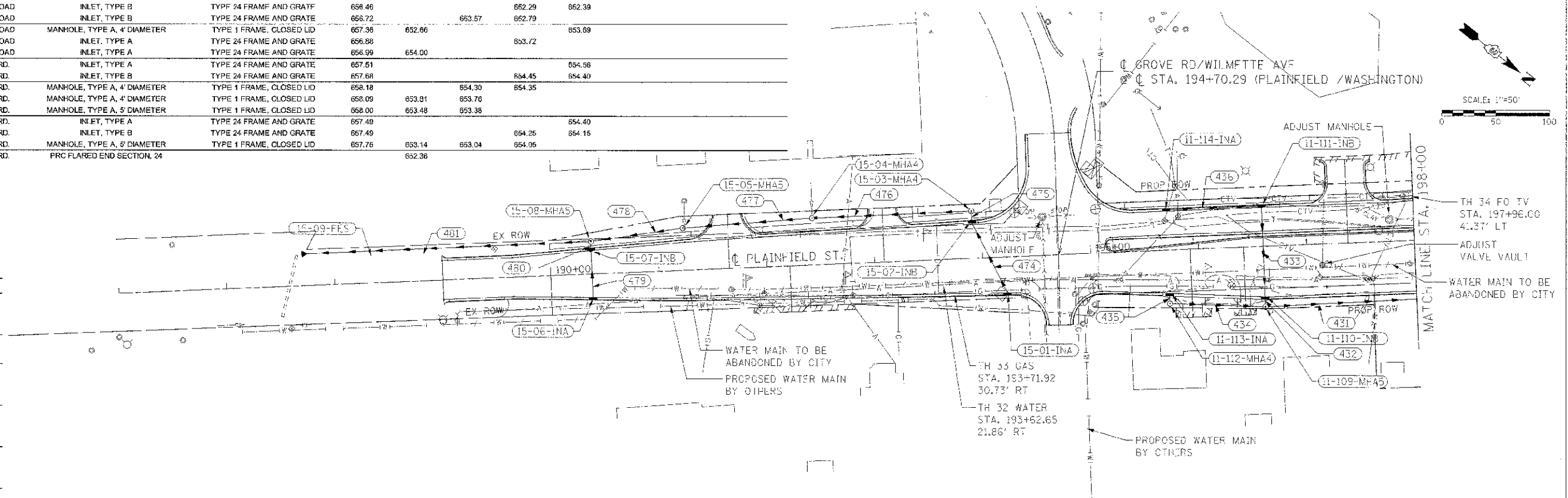
| F.A.P. RTE.               | SECTION | COUNTY         | TOTAL SHEETS | SHEET NO. |
|---------------------------|---------|----------------|--------------|-----------|
| 301                       | Q-DR    | KENDALL        | 54           | 27        |
| STA. 189+00               |         | TO STA. 198+00 |              |           |
| ILLINOIS FED. AID PROJECT |         |                |              |           |

**DRAINAGE STRUCTURE SCHEDULE**

| STRUCTURE NUMBER | STATION   | OFFSET     | ROUTE           | STRUCTURE TYPE               | CASTING                  | RIM ELEVATION | NORTH INVERT | SOUTH INVERT | EAST INVERT | WEST INVERT | COMMENTS |
|------------------|-----------|------------|-----------------|------------------------------|--------------------------|---------------|--------------|--------------|-------------|-------------|----------|
| 11-109-MH A      | 198+59.72 | 56.08' RT. | PLAINFIELD ROAD | MANHOLE, TYPE A, 8' DIAMETER | TYPE 1 FRAME, CLOSED LID | 656.92        | 652.14       | 652.24       |             | 652.26      |          |
| 11-110-IN B      | 198+59.78 | 46.74' RT. | PLAINFIELD ROAD | INLET, TYPE B                | TYPE 24 FRAME AND GRATE  | 658.46        |              |              | 652.29      | 652.38      |          |
| 11-111-IN B      | 198+59.73 | 36.00' LT. | PLAINFIELD ROAD | INLET, TYPE B                | TYPE 24 FRAME AND GRATE  | 658.72        |              | 653.57       | 652.79      |             |          |
| 11-112-MH A      | 195+71.52 | 49.60' RT. | PLAINFIELD ROAD | MANHOLE, TYPE A, 4' DIAMETER | TYPE 1 FRAME, CLOSED LID | 657.36        | 652.66       |              |             | 653.69      |          |
| 11-113-IN A      | 195+71.72 | 40.22' RT. | PLAINFIELD ROAD | INLET, TYPE A                | TYPE 24 FRAME AND GRATE  | 656.88        |              |              | 653.72      |             |          |
| 11-114-IN A      | 195+71.40 | 36.00' LT. | PLAINFIELD ROAD | INLET, TYPE A                | TYPE 24 FRAME AND GRATE  | 656.99        | 654.00       |              |             |             |          |
| 15-01-IN A       | 194+21.75 | 33.40' RT. | PLAINFIELD RD.  | INLET, TYPE A                | TYPE 24 FRAME AND GRATE  | 657.51        |              |              |             | 654.56      |          |
| 15-02-IN B       | 193+91.24 | 32.84' LT. | PLAINFIELD RD.  | INLET, TYPE B                | TYPE 24 FRAME AND GRATE  | 657.68        |              |              | 654.45      | 654.40      |          |
| 15-03-MH A       | 193+91.20 | 43.68' LT. | PLAINFIELD RD.  | MANHOLE, TYPE A, 4' DIAMETER | TYPE 1 FRAME, CLOSED LID | 658.18        |              | 654.30       |             | 654.35      |          |
| 15-04-MH A       | 192+43.54 | 43.31' LT. | PLAINFIELD RD.  | MANHOLE, TYPE A, 4' DIAMETER | TYPE 1 FRAME, CLOSED LID | 658.09        | 653.01       | 653.76       |             |             |          |
| 15-05-MH A       | 181+23.79 | 39.11' LT. | PLAINFIELD RD.  | MANHOLE, TYPE A, 5' DIAMETER | TYPE 1 FRAME, CLOSED LID | 658.00        | 653.48       | 653.38       |             |             |          |
| 15-06-IN A       | 190+38.24 | 20.84' RT. | PLAINFIELD RD.  | INLET, TYPE A                | TYPE 24 FRAME AND GRATE  | 657.49        |              |              |             | 654.40      |          |
| 15-07-IN B       | 190+38.11 | 20.71' LT. | PLAINFIELD RD.  | INLET, TYPE B                | TYPE 24 FRAME AND GRATE  | 657.49        |              |              | 654.25      | 654.15      |          |
| 15-08-MH A       | 190+38.25 | 30.12' LT. | PLAINFIELD RD.  | MANHOLE, TYPE A, 5' DIAMETER | TYPE 1 FRAME, CLOSED LID | 657.76        | 653.14       | 653.04       | 654.06      |             |          |
| 15-09-FES        | 187+76.30 | 29.42' LT. | PLAINFIELD RD.  | PRC FLARED END SECTION, 24"  |                          |               | 652.36       |              |             |             |          |

**STORM SEWER SCHEDULE**

| SEGMENT | SIZE     | LENGTH   | GRADE  |
|---------|----------|----------|--------|
| 431     | 24" SS X | 234.7' @ | 0.52 % |
| 432     | 15" SS X | 3.8' @   | 0.79 % |
| 433     | 15" SS X | 82.7' @  | 0.48 % |
| 434     | 12" SS X | 83.9' @  | 0.50 % |
| 435     | 12" SS X | 5.4' @   | 0.56 % |
| 436     | 12" SS X | 85.5' @  | 0.50 % |
| 474     | 12" SS X | 72.7' @  | 0.15 % |
| 475     | 12" SS X | 5.0' @   | 1.00 % |
| 476     | 12" SS X | 143.7' @ | 0.34 % |
| 477     | 16" SS X | 116.3' @ | 0.24 % |
| 478     | 24" SS X | 81.0' @  | 0.30 % |
| 479     | 12" SS X | 41.5' @  | 0.36 % |
| 480     | 12" SS X | 2.9' @   | 3.45 % |
| 481     | 24" SS X | 260.0' @ | 0.20 % |



UG PROJ: 1510/1014  
 PLOT DATE: 8/7/2012  
 FILE NAME: c:\pwork\1510\1014\1510\1014.dwg