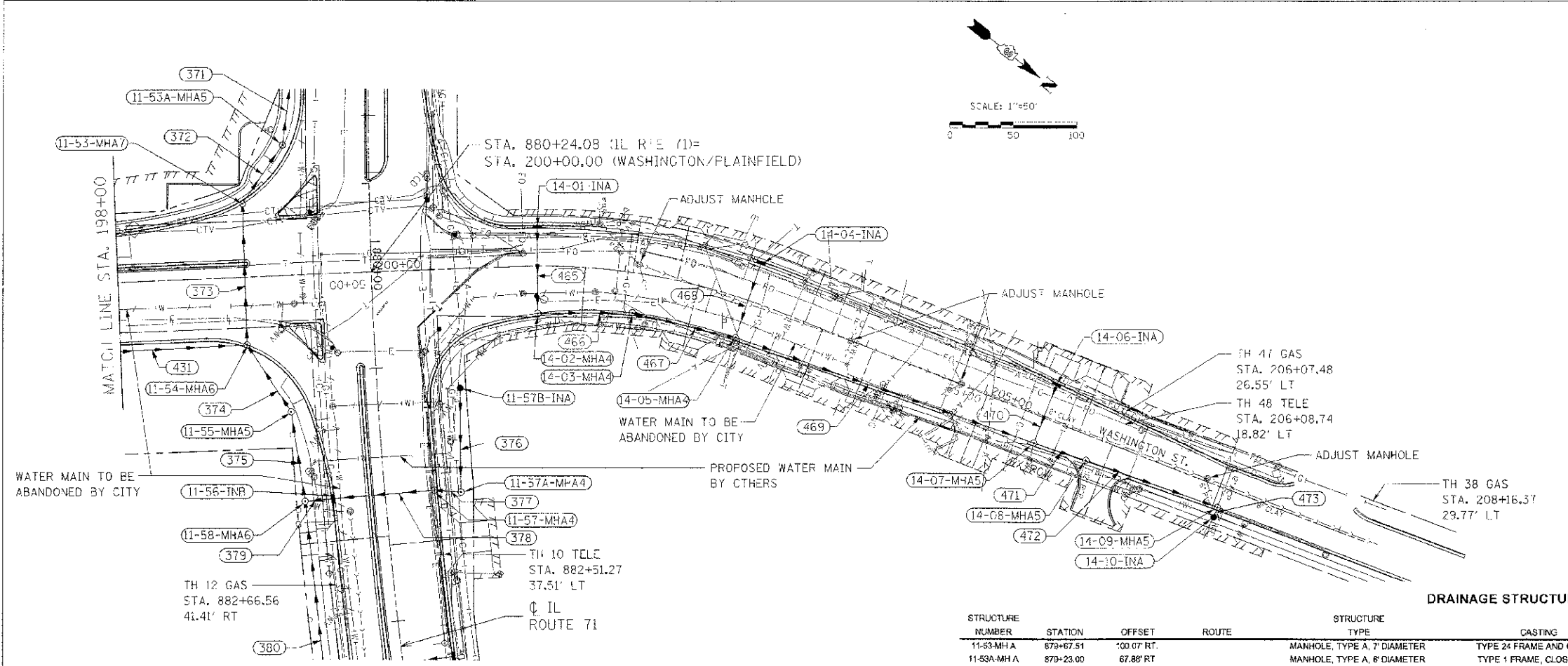


F.A.P. RTE.	SECTION	COUNTY	TOTAL SHEETS	SHEET NO.
31	11-11R	KEWASKAWA	514	272
STA. 198+00	TO STA. 207+00			
FED. ROAD DIST. NO.	ILLINOIS	FED. AID PROJECT		



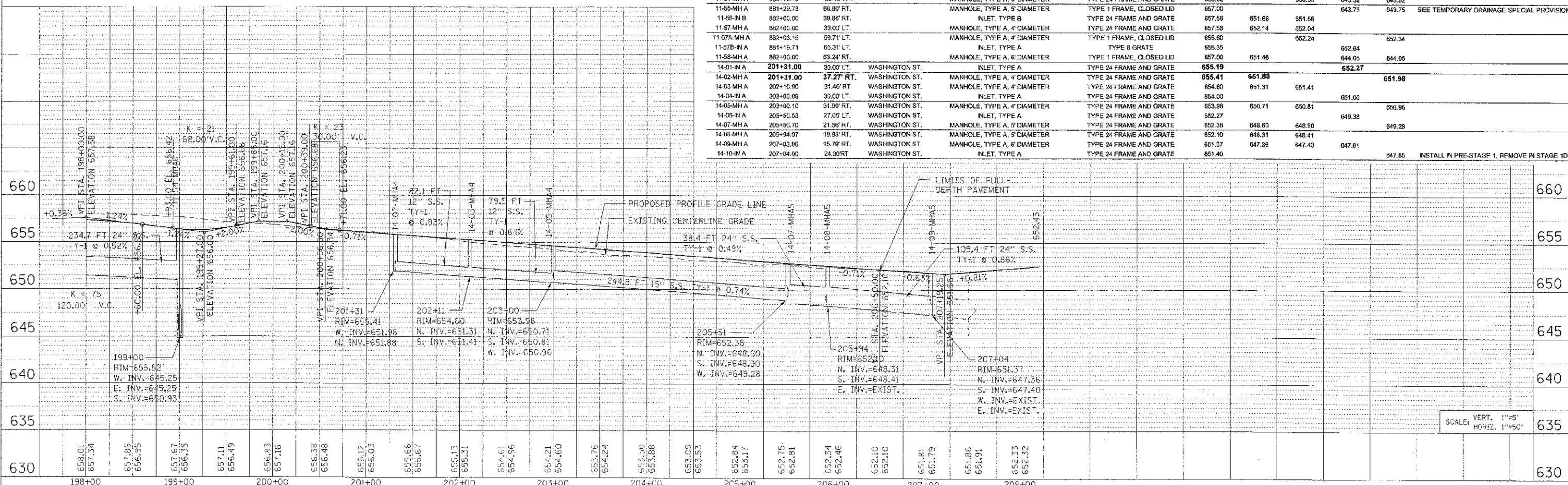
STORM SEWER SCHEDULE

SEGMENT	SIZE	LENGTH	GRADE
371	42" SS X	66.4'	@ 0.35%
372	42" SS X	49.3'	@ 0.49%
373	42" SS X	111.7'	@ 0.37%
374	42" SS X	57.8'	@ 0.40%
375	42" SS X	66.2'	@ 0.38%
378	12" SS X	79.3'	@ 0.38%
377	12" SS X	16.2'	@ 0.62%
378	15" SS X	78.3'	@ 0.50%
379	18" SS X	16.2'	@ 1.23%
380	42" SS X	129.2'	@ 0.41%
431	24" SS X	234.7'	@ 0.52%
465	12" SS X	67.3'	@ 0.43%
468	12" SS X	70.6'	@ 0.83%
467	12" SS X	79.5'	@ 0.63%
468	12" SS X	61.0'	@ 0.16%
469	15" SS X	244.8'	@ 0.74%
470	12" SS X	48.6'	@ 0.21%
471	24" SS X	38.4'	@ 0.49%
472	24" SS X	105.4'	@ 0.86%
473	12" SS X	8.0'	@ 0.62%

STORM SEWER LINE 473 TO BE CONNECTED TO EXISTING STORM SEWER IN STAGE 1D AFTER STRUCTURE 14-10 IS REMOVED. EXISTING INVERT TO BE VERIFIED BY CONTRACTOR.

DRAINAGE STRUCTURE SCHEDULE

STRUCTURE NUMBER	STATION	OFFSET	ROUTE	STRUCTURE TYPE	CASTING	RIM ELEVATION	NORTH INVERT	SOUTH INVERT	EAST INVERT	WEST INVERT	COMMENTS
11-53-MHA	679+67.51	100.07 RT.		MANHOLE, TYPE A, 7' DIAMETER	TYPE 24 FRAME AND GRATE	655.62	643.11		643.11		
11-53A-MHA	679+23.00	67.88 RT.		MANHOLE, TYPE A, 8' DIAMETER	TYPE 1 FRAME, CLOSED LID	655.06		642.87		642.87	
11-54-MHA	680+78.10	100.40 RT.		MANHOLE, TYPE A, 8' DIAMETER	TYPE 24 FRAME AND GRATE	655.52		650.33	643.52	643.52	
11-55-MHA	681+28.73	88.80 RT.		MANHOLE, TYPE A, 5' DIAMETER	TYPE 1 FRAME, CLOSED LID	657.00					SEE TEMPORARY DRAINAGE SPECIAL PROVISION
11-56-IN B	682+00.00	39.86 RT.		INLET, TYPE B	TYPE 24 FRAME AND GRATE	657.58	651.66	651.66			
11-57-MHA	682+00.00	39.00 LT.		MANHOLE, TYPE A, 4' DIAMETER	TYPE 24 FRAME AND GRATE	657.58	652.14	652.04			
11-57A-MHA	682+03.15	59.71 LT.		MANHOLE, TYPE A, 4' DIAMETER	TYPE 1 FRAME, CLOSED LID	655.60		652.24		652.34	
11-57B-IN A	681+19.71	65.31 LT.		INLET, TYPE A	TYPE 8 GRATE	655.35			652.64		
11-58-MHA	682+00.00	63.24 RT.		MANHOLE, TYPE A, 6' DIAMETER	TYPE 1 FRAME, CLOSED LID	657.00	651.46		644.05	644.05	
14-01-INA	201+31.00	30.00 LT.	WASHINGTON ST.	INLET, TYPE A	TYPE 24 FRAME AND GRATE	655.19			652.27		
14-02-MHA	201+31.00	37.27 RT.	WASHINGTON ST.	MANHOLE, TYPE A, 4' DIAMETER	TYPE 24 FRAME AND GRATE	655.41	651.88			651.98	
14-03-MHA	202+10.90	31.46 RT.	WASHINGTON ST.	MANHOLE, TYPE A, 4' DIAMETER	TYPE 24 FRAME AND GRATE	654.60	651.31	651.41			
14-04-INA	203+00.09	30.00 LT.	WASHINGTON ST.	INLET, TYPE A	TYPE 24 FRAME AND GRATE	654.00			651.05		
14-05-MHA	203+00.10	31.00 RT.	WASHINGTON ST.	MANHOLE, TYPE A, 4' DIAMETER	TYPE 24 FRAME AND GRATE	653.88	650.71	650.81		650.95	
14-06-INA	205+50.53	27.05 LT.	WASHINGTON ST.	INLET, TYPE A	TYPE 24 FRAME AND GRATE	652.27			649.38		
14-07-MHA	205+50.70	21.56 RT.	WASHINGTON ST.	MANHOLE, TYPE A, 5' DIAMETER	TYPE 24 FRAME AND GRATE	652.38	648.80	648.90		649.28	
14-08-MHA	205+94.07	19.83 RT.	WASHINGTON ST.	MANHOLE, TYPE A, 5' DIAMETER	TYPE 24 FRAME AND GRATE	652.10	648.31	648.41			
14-09-MHA	207+03.96	15.79 RT.	WASHINGTON ST.	MANHOLE, TYPE A, 5' DIAMETER	TYPE 24 FRAME AND GRATE	651.57	647.36	647.40	647.81		
14-10-INA	207+04.00	24.30 RT.	WASHINGTON ST.	INLET, TYPE A	TYPE 24 FRAME AND GRATE	651.40				647.85	INSTALL IN PRE-STAGE 1, REMOVE IN STAGE 1D



T15 PROJ: 3100814
 PLOT DATE: 07/02/2012
 FILE NAME: c:\pwork\pwork\11\cambal\11\3100814\11-11R.dwg