

PARCEL 3SD0114
RANDALL J. DETTLOFF
 TOTAL HOLDING = 21,107 Sq Ft.±
 TOTAL R.O.W. REQUIRED = 801 Sq Ft.±
 REMAINDER = 20,306 Sq Ft.±

PARCEL 3SD0115
RANDALL W. PIERCE, et al.
 TOTAL HOLDING = 19,489 Sq Ft.±
 TOTAL R.O.W. REQUIRED = 803 Sq Ft.±
 REMAINDER = 18,686 Sq Ft.±

PARCEL 3SD0116
MELVIN ARBEITER, et al.
 TOTAL HOLDING = 8,630 Sq Ft.±
 TOTAL R.O.W. REQUIRED = 806 Sq Ft.±
 REMAINDER = 7,824 Sq Ft.±

PARCEL 3SD0117
DAVID G. MILLER, et al.
 TOTAL HOLDING = 15,909 Sq Ft.±
 TOTAL R.O.W. REQUIRED = 809 Sq Ft.±
 REMAINDER = 15,100 Sq Ft.±

PARCEL 3SD0120
GARY-WHEATON BANK NATIONAL ASSOCIATION TRUST NO. 7808
 TOTAL HOLDING = 5,638 Sq Ft.±
 TOTAL R.O.W. REQUIRED = 5,638 Sq Ft.±
 REMAINDER = 0 Sq Ft.±

PARCEL 3SD0065
ZACHARY HORAN, et ux.
 TOTAL HOLDING = 6,708 Sq Ft.±
 TOTAL R.O.W. REQUIRED = 380 Sq Ft.±
 REMAINDER = 6,328 Sq Ft.±

PARCEL 3SD0064
CAROLYN M. SNOWWHITE, et al.
 TOTAL HOLDING = 6,185 Sq Ft.±
 TOTAL R.O.W. REQUIRED = 459 Sq Ft.±
 REMAINDER = 5,726 Sq Ft.±

PARCEL 3SD0063
PHYLIS J. RUEFFER, TRUSTEE
 TOTAL HOLDING = 7,205 Sq Ft.±
 TOTAL R.O.W. REQUIRED = 744 Sq Ft.±
 REMAINDER = 6,461 Sq Ft.±

PARCEL 3SD0056
KENNETH M. INGO, et ux.
 TOTAL HOLDING = 32,854 Sq Ft.±
 TOTAL R.O.W. REQUIRED = 2,658 Sq Ft.±
 REMAINDER = 30,299 Sq Ft.±

PARCEL 3SD0057
STEPHEN L. GREGORY, et al.
 TOTAL HOLDING = 17,666 Sq Ft.±
 TOTAL R.O.W. REQUIRED = 478 Sq Ft.±
 REMAINDER = 17,188 Sq Ft.±

PARCEL 3SD0055
MICHAEL S. PROSEK, et al.
 TOTAL HOLDING = 14,714 Sq Ft.±
 TOTAL R.O.W. REQUIRED = 2,045 Sq Ft.±
 REMAINDER = 12,669 Sq Ft.±
 TOTAL TEMPORARY EASEMENT = 954 Sq Ft.±
 T.E.-1 = 429 Sq Ft.±
 T.E.-2 = 525 Sq Ft.±
 PURPOSE: DRIVEWAY RECONSTRUCTION & GRADING

PARCEL	POINT TO POINT	BEARING	DISTANCE
3SD0056	158 TO 165	S.27°10'E	21.64'
	169 TO 170	R=3,531.10' L=104.64' CH= S.74°35'48"W, 104.64'	
	170 TO 166	N.09°30'2"W, 52.76'	
	166 TO 167	S.43°28'11"E, 34.15'	
	167 TO 168	R=3,505.28' L=73.80' CH= N.72°23'06"E, 73.31'	

PARCEL	POINT TO POINT	BEARING	DISTANCE
3SD0055	157 TO 160 (POB)	R=3,505.28' L=82.18' CH= N.78°56'45"E, 82.18'	
	160 TO 164	R=3,505.28' L=82.60' CH= N.77°35'57"E, 82.60'	
	164 TO 162	N.41°38'50"E, 17.36'	
	162 TO 165	S.0°03'02"E, 31.96'	
	165 TO 161	R=3,531.10' L=93.23' CH= S.77°31'28"W, 93.23'	

PURPOSE: DRIVEWAY RECONSTRUCTION & GRADING

PARCEL	POINT TO POINT	BEARING	DISTANCE
3SD0055	157 TO 160 (POB)	R=3,505.28' L=82.18' CH= N.78°56'45"E, 82.18'	
	160 TO 164	R=3,505.28' L=82.60' CH= N.77°35'57"E, 82.60'	
	164 TO 162	N.41°38'50"E, 17.36'	
	162 TO 165	S.0°03'02"E, 31.96'	
	165 TO 161	R=3,531.10' L=93.23' CH= S.77°31'28"W, 93.23'	
55-T.E. 1	156 TO 159 (POB)	R=3,500.28' L=82.13' CH= N.78°56'03"E, 82.13'	
	159 TO 163	R=3,500.28' L=88.82' CH= N.77°32'07"E, 88.82'	
55-T.E. 2	163 TO 164	S.41°58'50"W, 8.67'	
	164 TO 160	R=3,505.28' L=82.60' CH= S.77°35'57"W, 82.60'	
	160 TO 159	N.3°42'26"W, 5.06'	
	P.O.B. PAR. 157	S.2°39'00"E, 151.25'	
	157 TO 164	R=3,505.28' L=164.73' CH= N.78°19'15"E, 164.73'	
	164 TO 162	N.41°38'50"E, 17.36'	
	162 TO 162A (POB)	N.0°03'02"E, 23.03'	
	162A TO 162B	S.89°56'58"W, 15.00'	
	162B TO 162C	N.0°03'02"E, 55.00'	
	162C TO 162D	N.89°56'58"E, 15.00'	

PARCEL 3SD0054
ALLEN A. TAFT, et ux.
 TOTAL HOLDING = 13,632 Sq Ft.±
 TOTAL R.O.W. REQUIRED = 1,746 Sq Ft.±
 REMAINDER = 11,886 Sq Ft.±
 TEMPORARY EASEMENT = 411 Sq Ft.±
 PURPOSE: GRADING & SHAPING

PARCEL	POINT TO POINT	BEARING	DISTANCE
3SD0054	157 TO 160	R=3,505.28' L=82.18' CH= N.78°56'45"E, 82.18'	
	160 TO 161	S.3°14'26"E, 21.42'	
	161 TO 158	R=3,531.10' L=82.40' CH= S.78°56'58"W, 82.40'	
54-T.E.	158 TO 157	N.2°39'00"W, 21.45'	
	156 TO 156	R=3,500.28' L=82.13' CH= N.78°56'03"E, 82.13'	
	156 TO 157	R=3,505.28' L=82.18' CH= S.78°56'45"E, 82.18'	

PARCEL	POINT TO POINT	BEARING	DISTANCE
3SD0115	366 TO 367	R=3,505.28' L=73.81' CH= N.71°00'58"E, 73.81'	
	367 TO 368	S.0°11'08"E, 11.50'	
	368 TO 365	R=3,521.10' L=73.80' CH= S.71°12'26"W, 73.80'	
	365 TO 366	N.0°11'08"W, 11.47'	

PARCEL	POINT TO POINT	BEARING	DISTANCE
3SD0116	369 TO 370	S.0°11'08"E, 11.55'	
	370 TO 366	R=3,521.10' L=74.34' CH= S.70°00'07"W, 74.34'	
	368 TO 367	N.0°11'08"W, 11.50'	
	367 TO 369	R=3,505.28' L=74.36' CH= N.69°58'18"E, 74.36'	

PARCEL	POINT TO POINT	BEARING	DISTANCE
3SD0117	369 TO 371	R=3,505.28' L=74.95' CH= N.68°45'05"E, 74.95'	
	371 TO 372	S.0°11'08"E, 11.60'	
	372 TO 370	R=3,521.10' L=74.93' CH= S.68°47'15"W, 74.93'	
	370 TO 369	N.0°11'08"W, 11.55'	

PARCEL	POINT TO POINT	BEARING	DISTANCE
3SD0120	362 TO 292	R=3,521.10' L=551.10' CH= N.69°13'23"E, 550.54'	
	292 TO 213	N.89°48'52"E, 23.44'	
	213 TO 169	R=3,531.10' L=576.42' CH= S.69°04'18"W, 575.78'	
	169 TO 362	N.2°10'10"W, 10.31'	

PARCEL	POINT TO POINT	BEARING	DISTANCE
3SD0065	191 TO 190	N.18°15'19"W, 9.30'	
	190 TO 192	R=3,641.10' L=40.96' CH= N.66°27'30"E, 40.96'	
	192 TO 193	S.18°24'17"E, 9.33'	
	193 TO 191	R=3,645.28' L=40.98' CH= S.66°29'56"W, 40.98'	

PARCEL	POINT TO POINT	BEARING	DISTANCE
3SD0064	191 TO 189	R=3,645.28' L=49.11' CH= S.67°12'25"W, 49.11'	
	189 TO 188	N.24°42'30"W, 9.25'	
	188 TO 190	R=3,641.10' L=60.15' CH= N.67°10'31"E, 60.15'	
	190 TO 191	S.18°15'19"E, 9.30'	

PARCEL	POINT TO POINT	BEARING	DISTANCE
3SD0063	187 TO 186	R=3,641.10' L=82.90' CH= N.68°13'19"E, 82.90'	
	186 TO 188	R=3,641.10' L=82.90' CH= N.68°13'19"E, 82.90'	
	188 TO 189	S.24°40'50"E, 9.25'	
	189 TO 187	R=3,645.28' L=78.60' CH= S.68°12'38"W, 78.59'	

PARCEL 3SD0062
HANNELORE STURM, TRUSTEE
 TOTAL HOLDING = 7,870 Sq Ft.±
 TOTAL R.O.W. REQUIRED = 706 Sq Ft.±
 REMAINDER = 7,164 Sq Ft.±

PARCEL	POINT TO POINT	BEARING	DISTANCE
3SD0062	187 TO 185	R=3,645.28' L=75.35' CH= S.69°25'14"W, 75.35'	
	185 TO 184	N.61°39'14"W, 12.27'	
	184 TO 186	R=3,641.10' L=78.44' CH= N.69°29'29"E, 78.44'	
	186 TO 187	S.49°04'38"E, 10.41'	

PARCEL 3SD0061
ARIF RANGWALA
 TOTAL HOLDING = 9,364 Sq Ft.±
 TOTAL R.O.W. REQUIRED = 271 Sq Ft.±
 REMAINDER = 9,093 Sq Ft.±

PARCEL	POINT TO POINT	BEARING	DISTANCE
3SD0061	183 TO 182	N.33°02'57"W, 9.40'	
	182 TO 184	R=3,641.10' L=26.64' CH= N.70°39'05"E, 26.64'	
	184 TO 185	S.61°39'14"E, 12.27'	
	185 TO 183	R=3,645.28' L=32.67' CH= S.70°16'10"W, 32.67'	

PARCEL 3SD0060
DONNA CARMIGNANI
 TOTAL HOLDING = 17,673 Sq Ft.±
 TOTAL R.O.W. REQUIRED = 1,414 Sq Ft.±
 REMAINDER = 16,259 Sq Ft.±

PARCEL	POINT TO POINT	BEARING	DISTANCE
3SD0060	181 TO 180	N.27°46'47"W, 9.21'	
	180 TO 182	R=3,641.10' L=155.10' CH= N.71°44'53"E, 155.09'	
	182 TO 183	S.33°02'57"E, 9.40'	
	183 TO 181	R=3,645.28' L=155.98' CH= S.71°45'07"W, 155.97'	

PARCEL 3SD0059
DUANE C. ZIMMERMAN, et ux.
 TOTAL HOLDING = 15,770 Sq Ft.±
 TOTAL R.O.W. REQUIRED = 548 Sq Ft.±
 REMAINDER = 15,222 Sq Ft.±

PARCEL	POINT TO POINT	BEARING	DISTANCE
3SD0059	173 TO 172	N.62°27'20"E, 9.75'	
	172 TO 180	R=3,641.10' L=57.95' CH= N.73°25'28"E, 57.94'	
	180 TO 181	S.27°46'47"E, 9.21'	

PARCEL 3SD0058
SHAHAB J. SYED, et al.
 TOTAL HOLDING = 15,128 Sq Ft.±
 TOTAL R.O.W. REQUIRED = 1,179 Sq Ft.±
 REMAINDER = 13,949 Sq Ft.±
 TEMPORARY EASEMENT = 1,232 Sq Ft.±
 PURPOSE: DRIVEWAY RECONSTRUCTION & GRADING

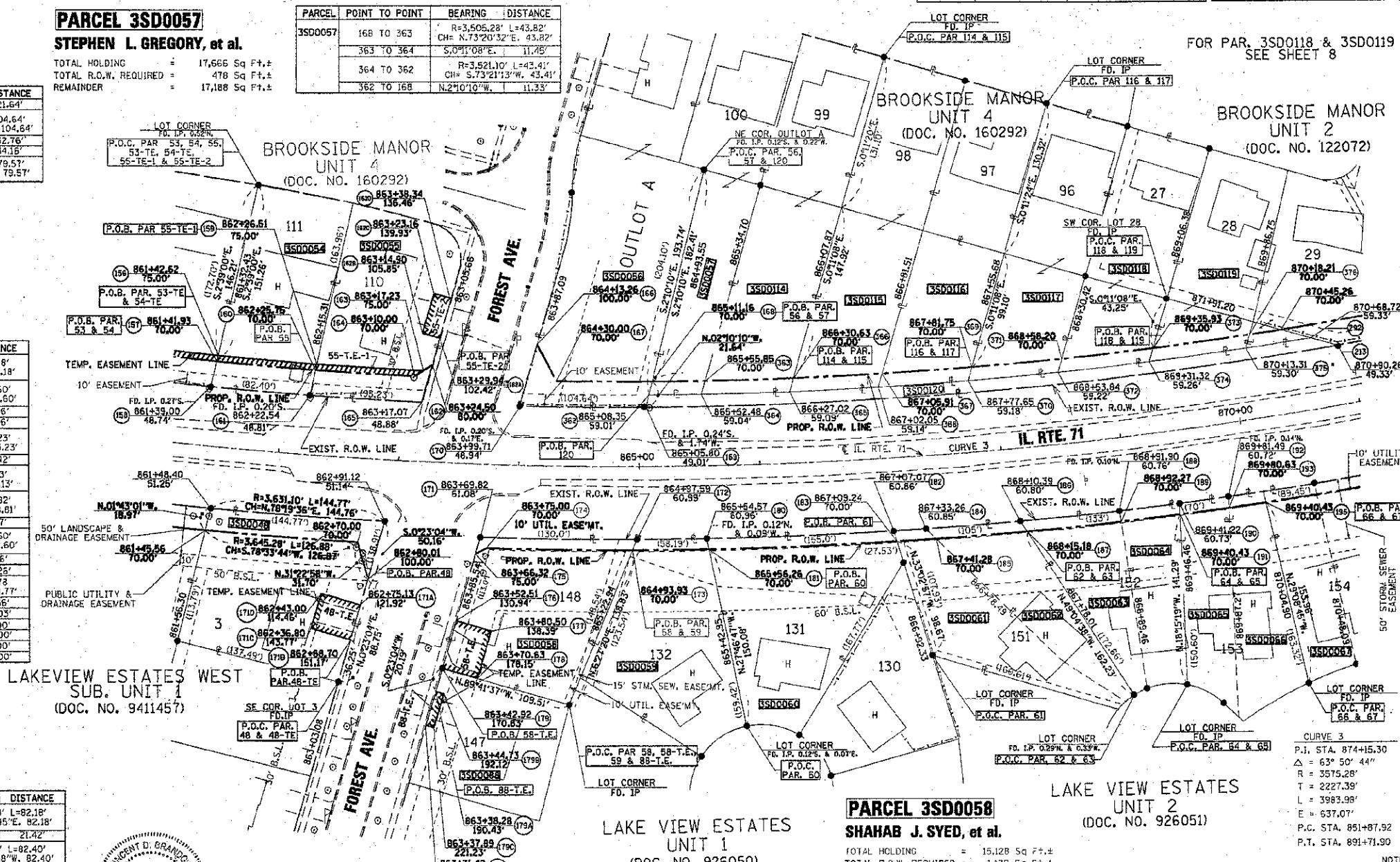
PARCEL	POINT TO POINT	BEARING	DISTANCE
3SD0058	173 TO 174	R=3,545.28' L=121.25' CH= S.74°55'45"W, 121.25'	
	174 TO 175	S.46°30'37"W, 10.17'	
	175 TO 171	N.0°23'04"E, 14.37'	

PARCEL 3SD0048
DANIEL D. WOODLAND, et ux.
 TOTAL HOLDING = 17,586 Sq Ft.±
 TOTAL R.O.W. REQUIRED = 2,972 Sq Ft.±
 REMAINDER = 14,614 Sq Ft.±
 TEMPORARY EASEMENT = 1,021 Sq Ft.±
 PURPOSE: DRIVEWAY RECONSTRUCTION & GRADING

PARCEL	POINT TO POINT	BEARING	DISTANCE
48-T.E.	171B TO 171C	N.89°35'33"W, 34.03'	
	171C TO 171D	N.0°24'26"E, 30.00'	
	171D TO 171A	S.89°35'36"E, 34.02'	
	171A TO 171B	S.0°23'04"W, 30.00'	

PARCEL 3SD0088
LINDA M. SCHULTE, TRUSTEE
 TOTAL HOLDING = 11,134 Sq Ft.±
 TEMPORARY EASEMENT = 210 Sq Ft.±
 PURPOSE: DRIVEWAY RECONSTRUCTION & GRADING

PARCEL	POINT TO POINT	BEARING	DISTANCE
88-T.E.	175A TO 175B	S.89°35'58"E, 7.00'	
	175B TO 175C	S.0°23'04"W, 30.00'	
	175C TO 175D	N.89°35'58"W, 7.00'	
	175D TO 175A	N.0°23'04"E, 30.00'	



I VINCENT D. BRANDOW, HEREBY CERTIFY THAT I AM A PROFESSIONAL LAND SURVEYOR OF THE STATE OF ILLINOIS, THAT THE SURVEY OF PROPOSED F.A.P. 311 (ILL. RTE. 71) WAS MADE BY RENWICK & ASSOCIATES, INC. UNDER MY DIRECTION, AND THAT THE SURVEY IS TRUE AND COMPLETE AS SHOWN TO THE BEST OF MY KNOWLEDGE AND BELIEF, THAT ALL MONUMENTS AND MARKS ARE OF THE CHARACTER AND OCCUPY THE POSITION SHOWN THEREON, AND ARE SUFFICIENT TO ENABLE THE SURVEY TO BE RETRACED. THIS PROFESSIONAL SERVICE CONFORMS TO THE CURRENT ILLINOIS MINIMUM STANDARDS FOR A BOUNDARY SURVEY.

DATE: 10-15-10

SURVEY BOOK NO. _____

ILLINOIS PROFESSIONAL LAND SURVEYOR
 NO. 2555

11-30-10
 EXPIRATION DATE

NOTE: ALL BEARINGS ARE REFERENCED TO THE ILLINOIS STATE PLANE COORDINATE SYSTEM, EAST ZONE (N.A.D. 83)

SCALE 1" = 50'

RIGHT OF WAY PLANS

ROUTE	F.A.P. 311 (ILL. RTE. 71)
SECTION	(1)-1R
PROJECT	
COUNTY	KENDALL
JOB NUMBER	R-93-015-02
STATION	861+25.00 TO 871+00.00
SHEET	7 OF 13 SCALE 1"=50'