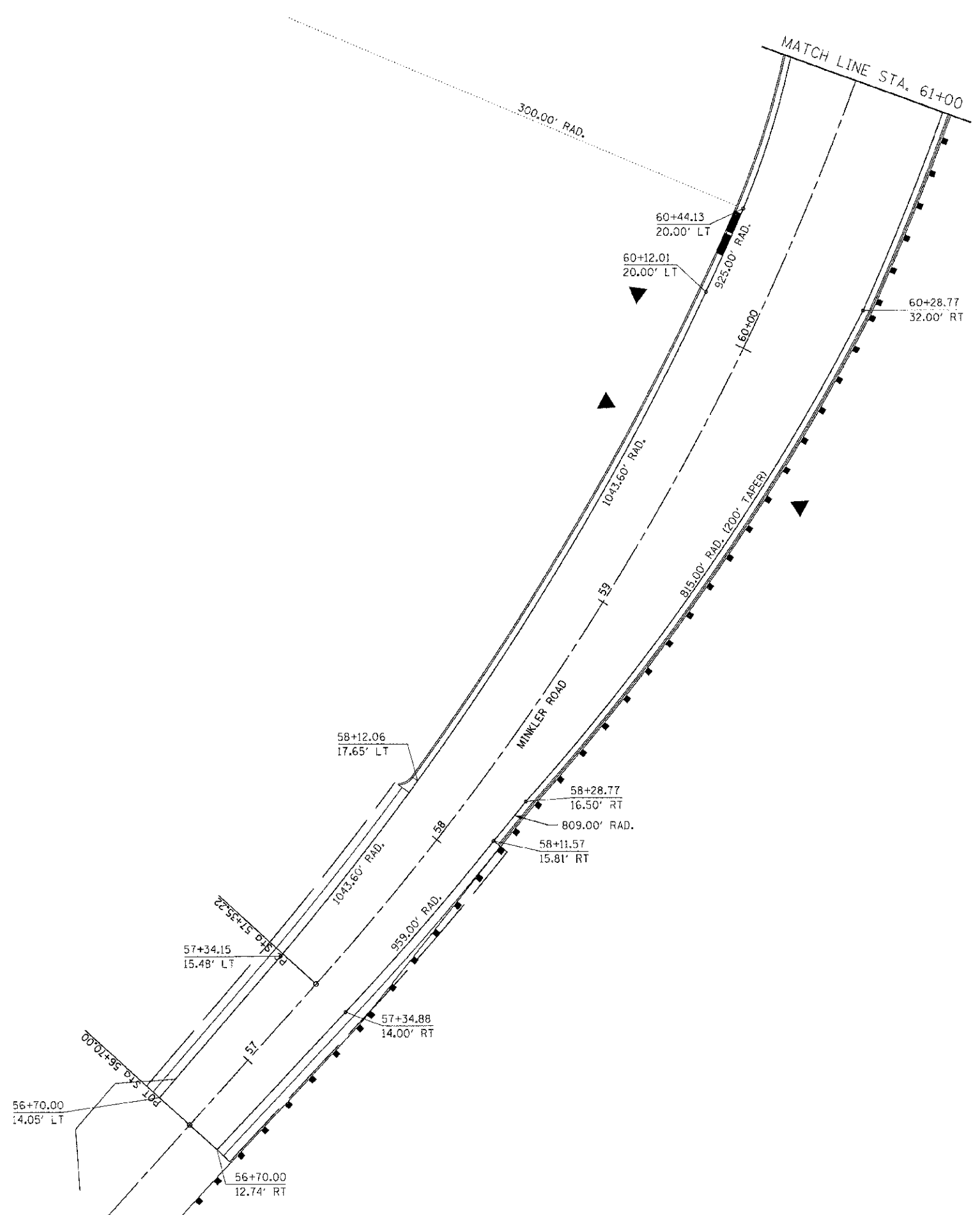
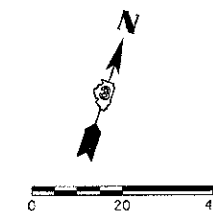


F.A.P. RTE.	SECTION	COUNTY	TOTAL SHEETS	SHEET NO.
311	(1-1)R	KENDALL	514	327
STA. 56+70		TO STA. 61+00		
FED. ROAD DIST. NO.		ILLINOIS FED. AID PROJECT		



- NOTES:**
- FOR ADDITIONAL DETAILS, SEE JOINTING PLANS, SIGNING AND STRIPING PLANS, AND TRAFFIC SIGNAL PLANS.

REVISIONS	
NAME	DATE

ILLINOIS DEPARTMENT OF TRANSPORTATION

INTERSECTION DETAIL

MINKLER ROAD

STA. 56 + 70 TO STA. 61 + 00

SCALE: VERT. 1"=20'
 HORIZ. 1"=20'
 DATE 7/5/2012

DRAWN BY SAE
 CHECKED BY MED

THIS PROJECT NUMBER IS 11085814
 PLOT DATE IS 7/5/2012
 FILE NAME IS p:\net\11085814.dwg