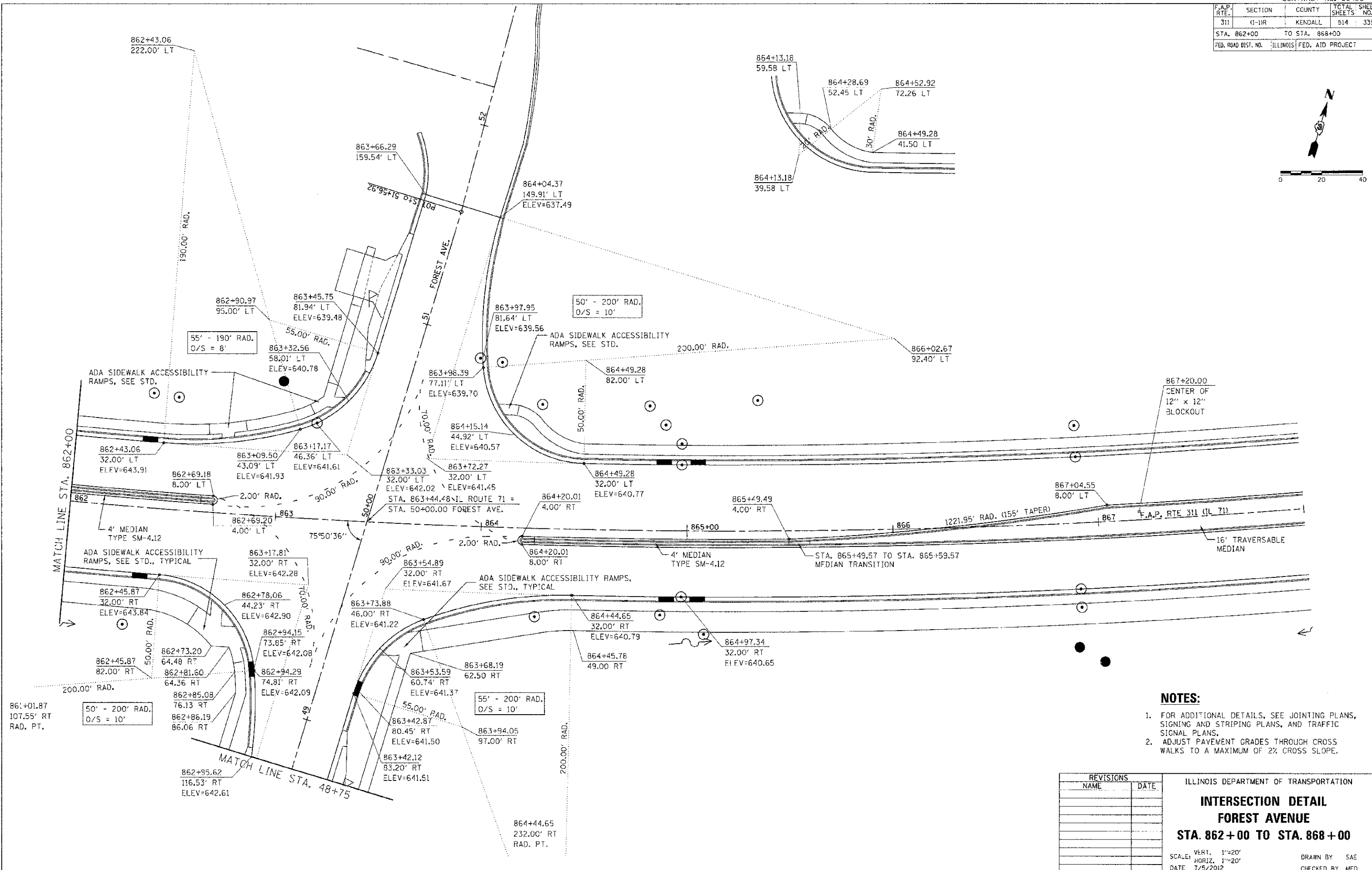
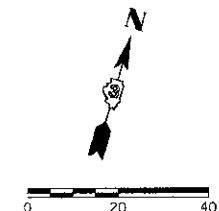


F.A.P. RTE.	SECTION	COUNTY	TOTAL SHEETS	SHEET NO.
311	0-1R	KENDALL	514	335
STA. 862+00		TO STA. 868+00		
FED. ROAD DIST. NO. ILLINOIS FED. AID PROJECT				



**NOTES:**

1. FOR ADDITIONAL DETAILS, SEE JOINTING PLANS, SIGNING AND STRIPING PLANS, AND TRAFFIC SIGNAL PLANS.
2. ADJUST PAVEMENT GRADES THROUGH CROSS WALKS TO A MAXIMUM OF 2% CROSS SLOPE.

REVISIONS	
NAME	DATE

ILLINOIS DEPARTMENT OF TRANSPORTATION  
**INTERSECTION DETAIL**  
**FOREST AVENUE**  
**STA. 862+00 TO STA. 868+00**

SCALE: VERT. 1"=20'  
 HORIZ. 1"=20'  
 DATE 7/5/2012  
 DRAWN BY SAE  
 CHECKED BY MED

TUG PROJ. #3195814  
 PLOT DATE = 7/5/2012  
 FILE NAME = p:\net\1\...doe\dist3\orange\phase 11\IntForest-82.dgn