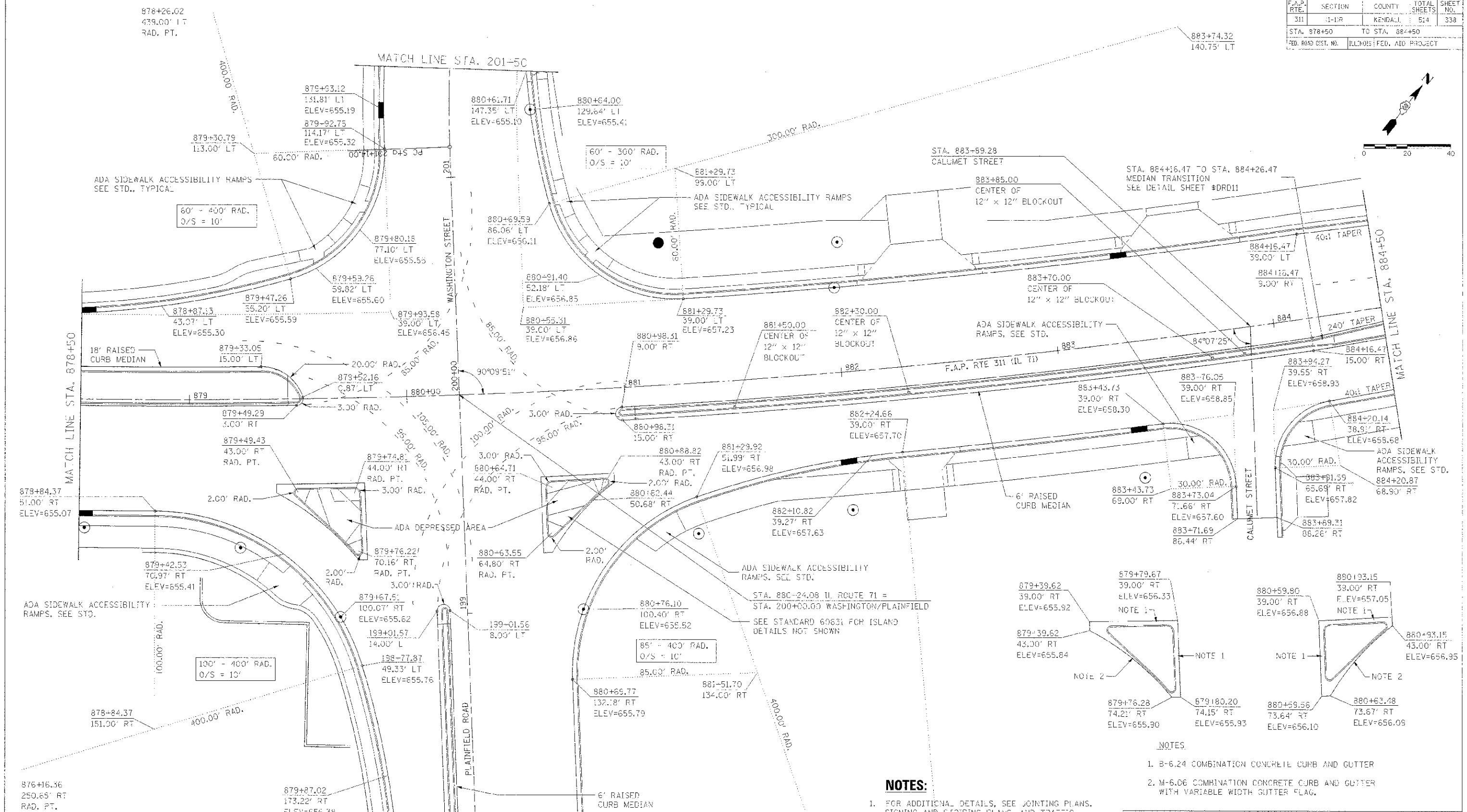
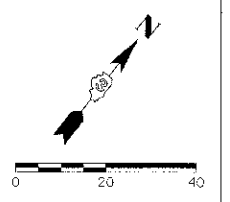


F.A.P. RTE.	SECTION	COUNTY	TOTAL SHEETS	SHEET NO.
311	1-10R	KENDALL	54	338
STA. 878+50		TO STA. 884+50		
FED. ROAD DIST. NO.		ILLINOIS FED. AID PROJECT		



NOTES:

- FOR ADDITIONAL DETAILS, SEE JOINTING PLANS, SIGNING AND STRIPING PLANS, AND TRAFFIC SIGNAL PLANS.
- ADJUST PAVEMENT GRADES THROUGH CROSS WALKS TO A MAXIMUM OF 2% CROSS SLOPE.

NOTES:

- B-6.24 COMBINATION CONCRETE CURB AND GUTTER
- M-6.06 COMBINATION CONCRETE CURB AND GUTTER WITH VARIABLE WIDTH GUTTER FLAG.

REVISIONS	
NAME	DATE
BDD	8-8-12

ILLINOIS DEPARTMENT OF TRANSPORTATION
INTERSECTION DETAIL
PLAINFIELD RD / WASHINGTON ST
STA. 878 + 50 TO STA. 884 + 50

SCALE: VERT. 1"=20'
 HORIZ. 1"=20'
 DATE 7/5/2012
 DRAWN BY SAL
 CHECKED BY MED

THIS FILE IS A DWG FILE
 FILE NAME: C:\Users\jgordon\Documents\Drawings\8265\11a_Washington-22e-revised.dgn
 PLOT DATE: 8/2/2012
 PLOT TIME: 1:54:00 PM