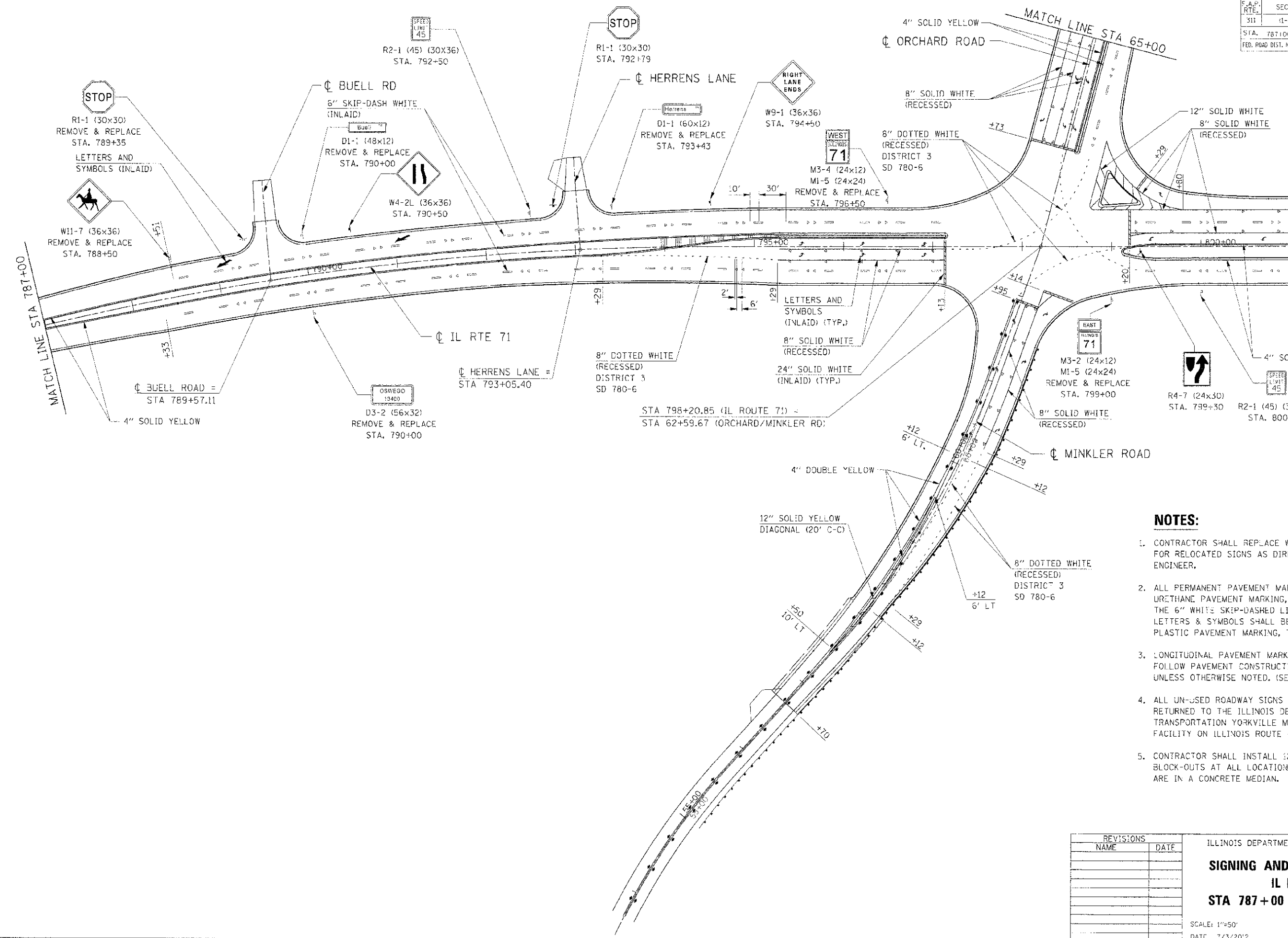
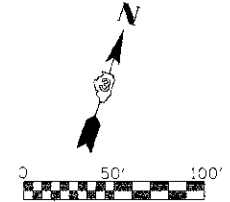


S.A.P. RTE.	SECTION	COUNTY	TOTAL SHEETS	SHEET NO.
311	(1-1) R	KENDALL	514	347
STA. 787+00		TO STA. 801+00		
FED. ROAD DIST. NO. ILLINOIS FED. AID PROJECT				



NOTES:

1. CONTRACTOR SHALL REPLACE WOOD POSTS FOR RELOCATED SIGNS AS DIRECTED BY THE ENGINEER.
2. ALL PERMANENT PAVEMENT MARKING SHALL BE URETHANE PAVEMENT MARKING, EXCEPT FOR THE 6" WHITE SKIP-DASHED LINE, 24" STOP BAR, LETTERS & SYMBOLS SHALL BE PERFORMED PLASTIC PAVEMENT MARKING, TYPE-B, INLAID.
3. LONGITUDINAL PAVEMENT MARKING SHALL FOLLOW PAVEMENT CONSTRUCTION JOINTS UNLESS OTHERWISE NOTED. (SEE JOINTING PLANS)
4. ALL UN-USED ROADWAY SIGNS ARE TO BE RETURNED TO THE ILLINOIS DEPARTMENT OF TRANSPORTATION YORKVILLE MAINTENANCE FACILITY ON ILLINOIS ROUTE 47.
5. CONTRACTOR SHALL INSTALL 12"x12" SIGN BLOCK-OUTS AT ALL LOCATIONS WHERE SIGNS ARE IN A CONCRETE MEDIAN.

REVISIONS	
NAME	DATE

ILLINOIS DEPARTMENT OF TRANSPORTATION
SIGNING AND STRIPING PLAN
IL RTE 71
STA 787+00 TO STA 801+00

SCALE: 1"=50'
 DATE: 7/3/2012
 DRAWN BY: _____
 CHECKED BY: RG

I:\PROJECTS\66420\66420.DWG
 FILE NAME: 66420.DWG
 PLOT DATE: 7/3/2012
 PLOT TIME: 10:00:00 AM