

F.A.P. RTE.	SECTION	COUNTY	TOTAL SHEETS	SHEET NO.
311	(1-1)R	KENDALL	514	400
STA. 780+44.91		TO STA. 918+85.86		
FED. ROAD DIST. NO.		ILLINOIS FED. AID PROJECT		

DESIGN SPECIFICATIONS:

AASHTO 1989 GUIDE SPECIFICATIONS FOR STRUCTURAL DESIGN OF SOUND BARRIERS AND 1992 AND 2002 INTERIMS.

DESIGN STRESSES:

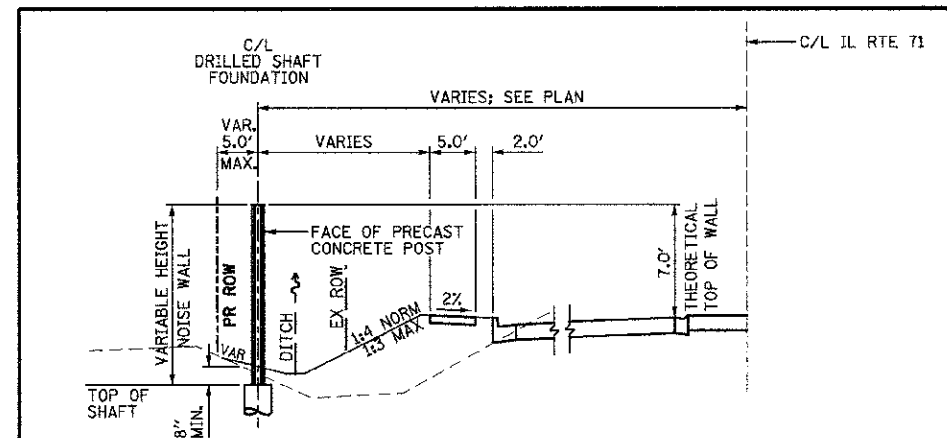
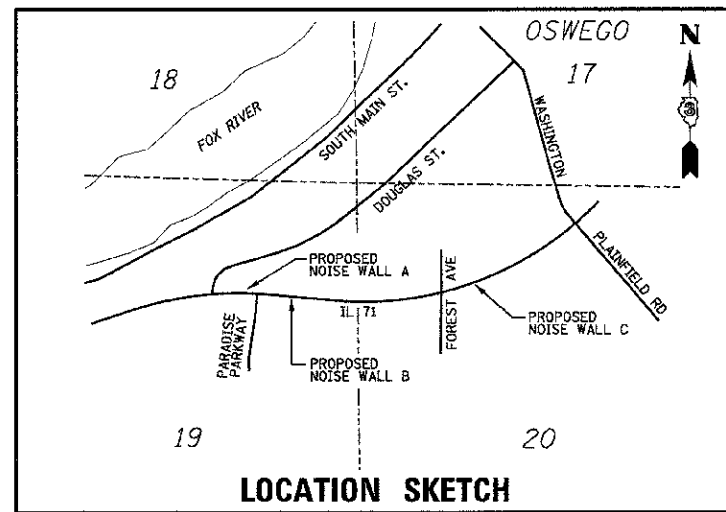
f'c = 3,500 psi FOR DRILLED SHAFT FOUNDATIONS
 f'c = 4,500 psi FOR PRECAST CONCRETE WALL PANELS AND POSTS
 fy = 60,000 psi FOR REINFORCING STEEL

SESMIC DATA:

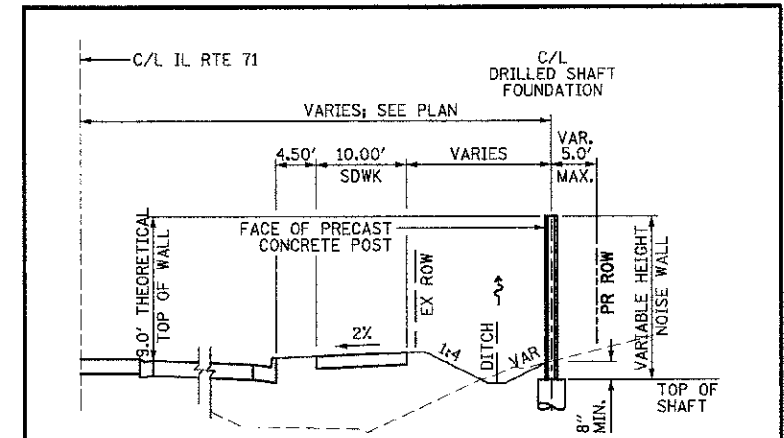
BEDROCK ACCELERATION COEFFICIENT (A) = 0.036
 SEISMIC PERFORMANCE CATEGORY (SPC) = A
 SITE COEFFICIENT (S) = 1.0

GENERAL NOTES:

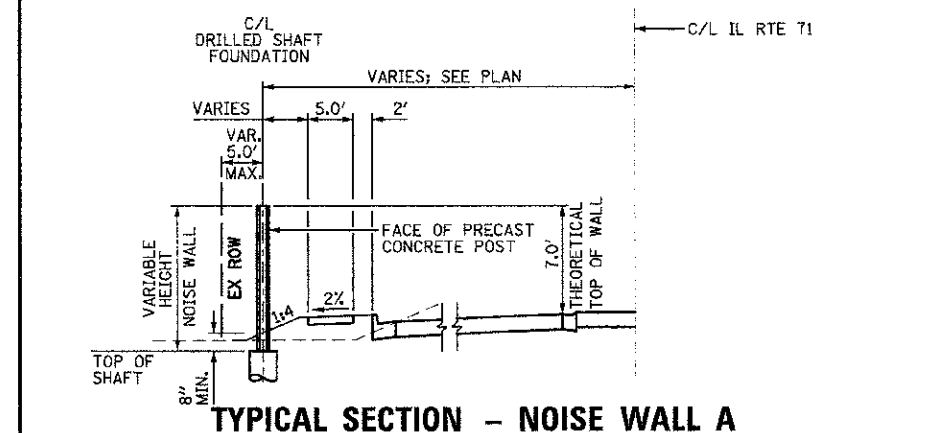
- 1) WALLS SHALL BE FABRICATED AS A REFLECTIVE ABATEMENT SYSTEM.
- 2) THE WALL TEXTURE PATTERN AND COLOR FOR THE PRECAST CONCRETE PANELS, AND COLOR FOR THE PRECAST CONCRETE POSTS SHALL BE IN ACCORDANCE WITH SPECIAL PROVISIONS, AND SHALL BE IDENTICAL TO THE NOISE ABATEMENT WALL RECENTLY INSTALLED ON US 34 NEAR IL 71.
- 3) DRILLED SHAFT FOUNDATIONS SHALL BE INCLUDED FOR PAYMENT AS PART OF "NOISE ABATEMENT WALL, PRECAST CONCRETE".
- 4) QUANTITIES FOR NOISE ABATEMENT WALL, PRECAST CONCRETE ARE CALCULATED USING THE WALL HEIGHT DIMENSIONS SHOWN, BETWEEN THE THEORETICAL TOP OF WALL AND THEORETICAL BOTTOM OF WALL AT CENTERLINE OF DRILLED SHAFT FOUNDATIONS.



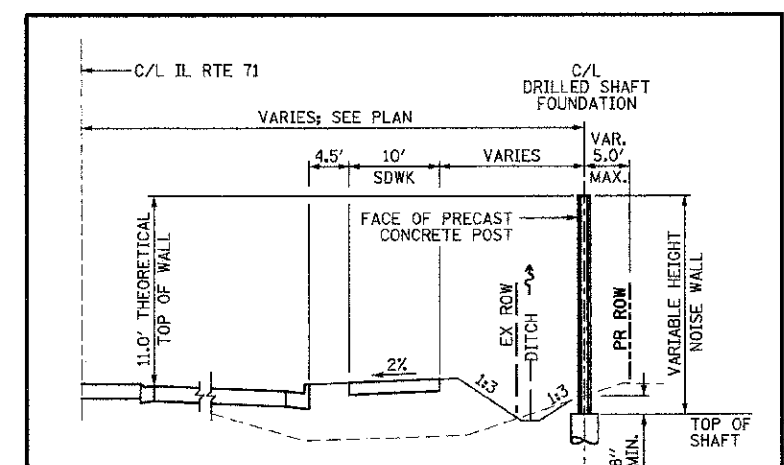
TYPICAL SECTION - NOISE WALL A
 STA 841+50.00 TO STA 844+50.00
 STA 845+50.00 TO STA 847+75.00



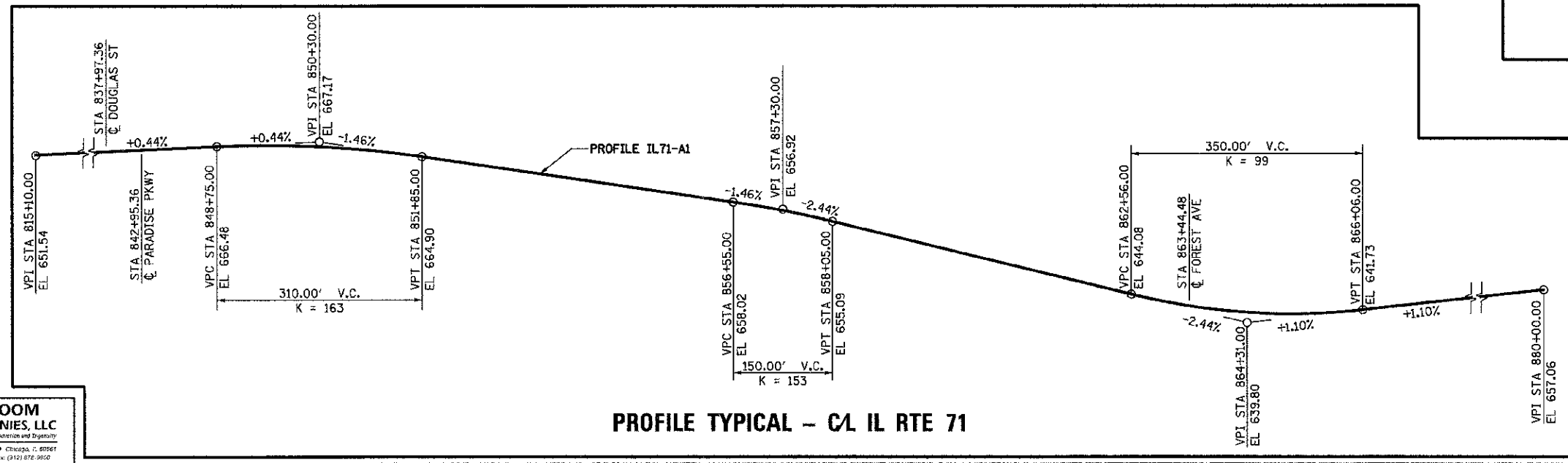
TYPICAL SECTION - NOISE WALL B
 STA 843+74.72 TO STA 862+24.52



TYPICAL SECTION - NOISE WALL A
 STA 839+48.41 TO STA 841+50.00
 STA 844+50.00 TO STA 845+50.00
 STA 847+75.00 TO STA 848+80.80



TYPICAL SECTION - NOISE WALL C
 STA 864+43.52 TO STA 874+60.00



PROFILE TYPICAL - C/L IL RTE 71

REVISIONS		ILLINOIS DEPARTMENT OF TRANSPORTATION
NAME	DATE	
		IL 71, OSWEGO NOISE WALL TYPICALS & NOTES

SCALE: VERT. _____
 HORIZ. _____
 DATE: 07/06/2012

DRAWN BY: TL/KD
 CHECKED BY: DJB