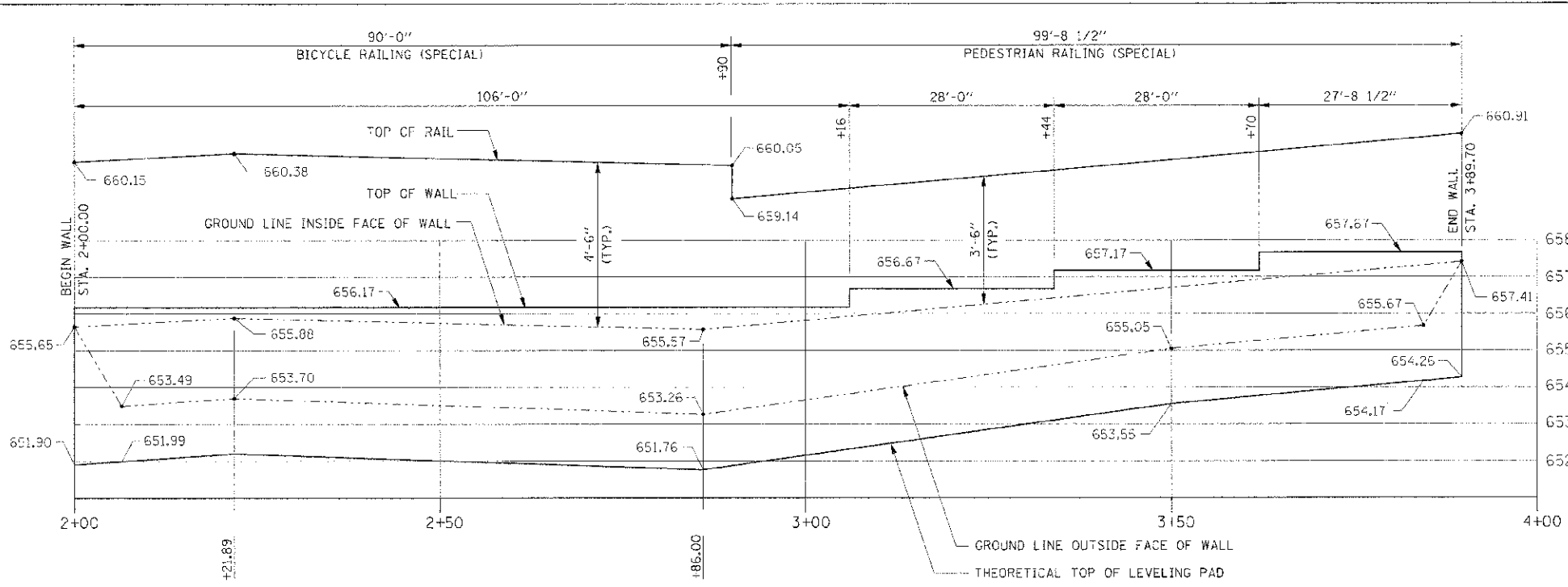
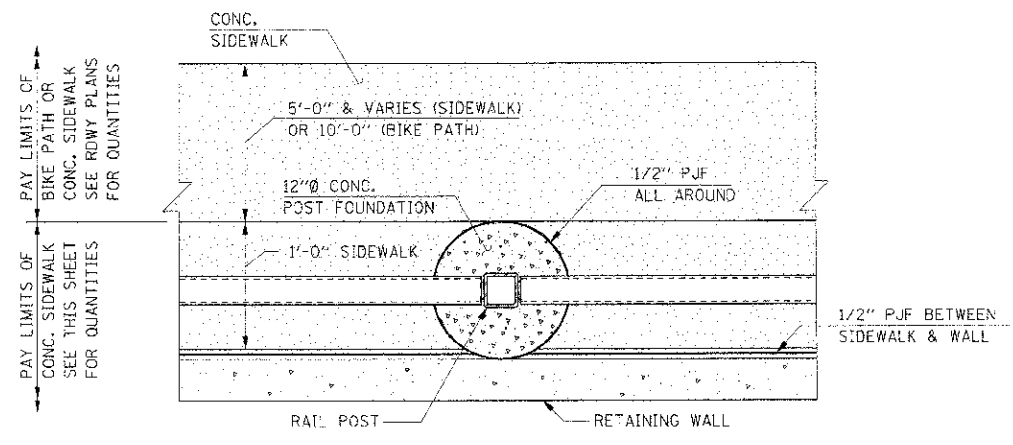


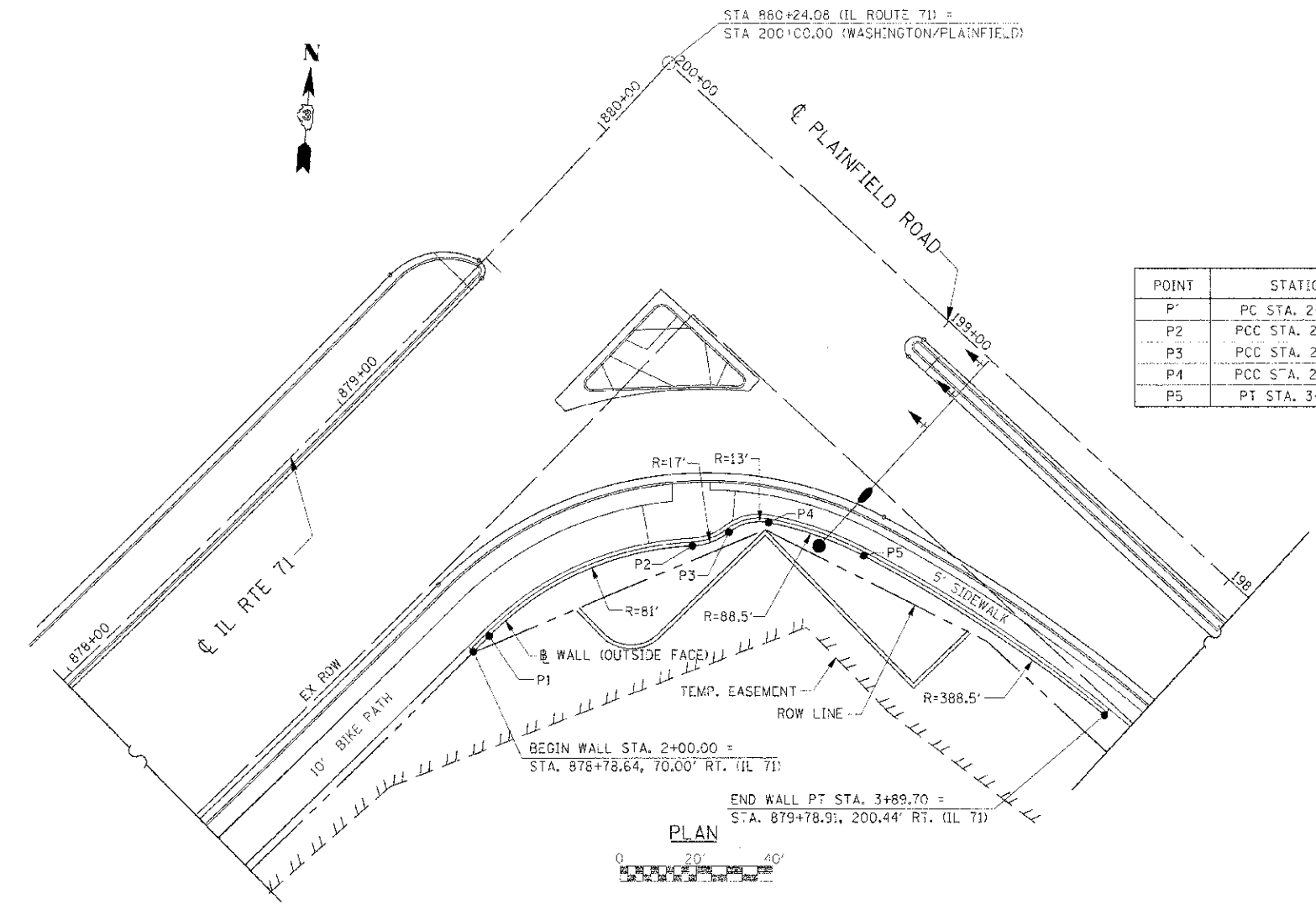
F.A.P. RTE.	SECTION	COUNTY	TOTAL SHEETS	SHEET NO.
311	(1-1) R	KENDALL	524	418
STA.	TO STA.			
FED. ROAD DIST. NO. ILLINOIS FED. AID PROJECT				



SEGMENTAL CONCRETE BLOCK WALL - ELEVATION  
LOOKING AT OUTSIDE FACE OF WALL

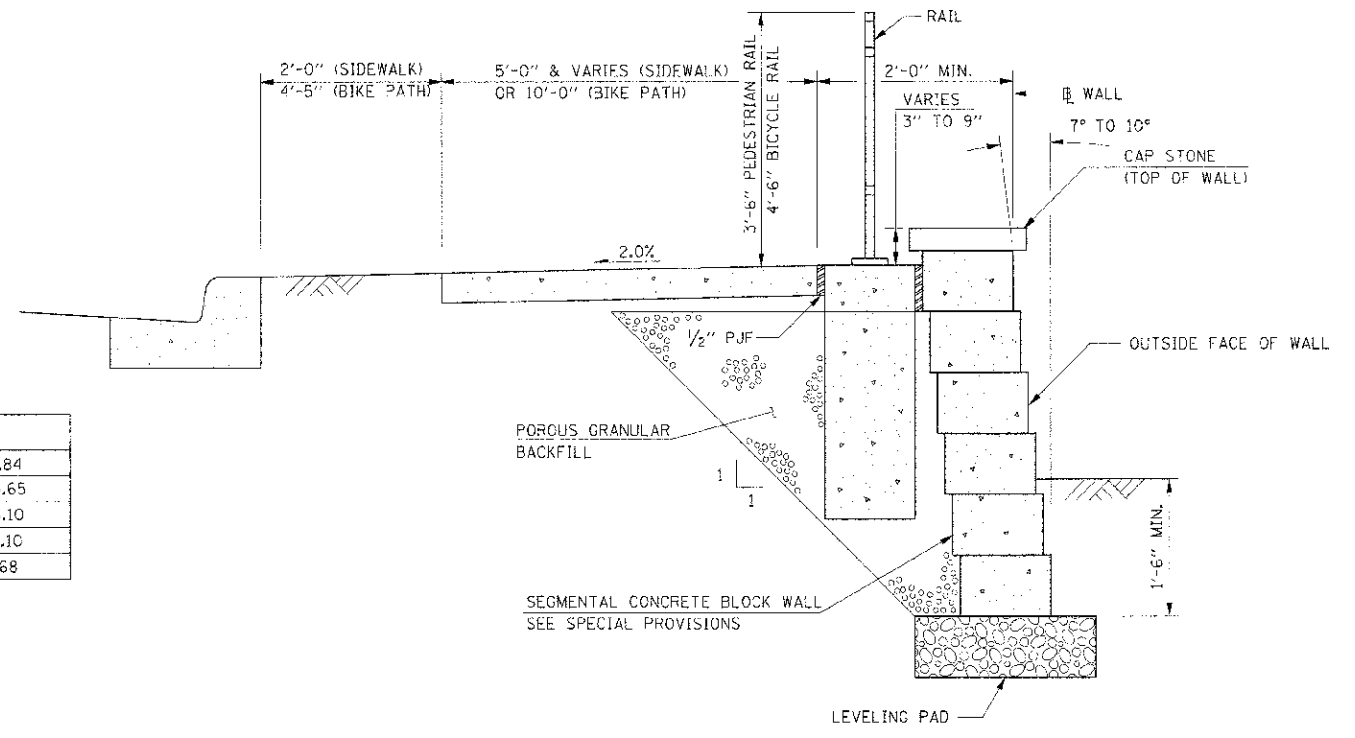


PLAN - AT RAIL POST



PLAN

POINT	STATION
P1	PC STA. 2+05.84
P2	PCC STA. 2+65.65
P3	PCC STA. 2+76.10
P4	PCC STA. 2+87.10
P5	PT STA. 3+13.68



TYPICAL SECTION THRU SEGMENTAL CONCRETE BLOCK WALL

BILL OF MATERIALS

ITEM	UNIT	QUANTITY
SEGMENTAL CONCRETE BLOCK WALL	SO FT	758
PEDESTRIAN RAIL (SPECIAL)	FOOT	100
BICYCLE RAILING, SPECIAL	FOOT	90
PCC SIDEWALK 4 IN	SO FT	190

REVISIONS	
NAME	DATE

ILLINOIS DEPARTMENT OF TRANSPORTATION  
**RETAINING WALL PLAN**  
**IL RTE 71**  
**WASHINGTON / PLAINFIELD**  
SCALE: AS SHOWN  
DATE: 7/3/2012  
DRAWN BY: THW  
CHECKED BY: DRB

IE PROJ: 6520023  
PLOT DATE: 7/3/2012  
FILE NAME: C:\S\66420\5-CANVIL7\LPE.dwg 1:01:58T