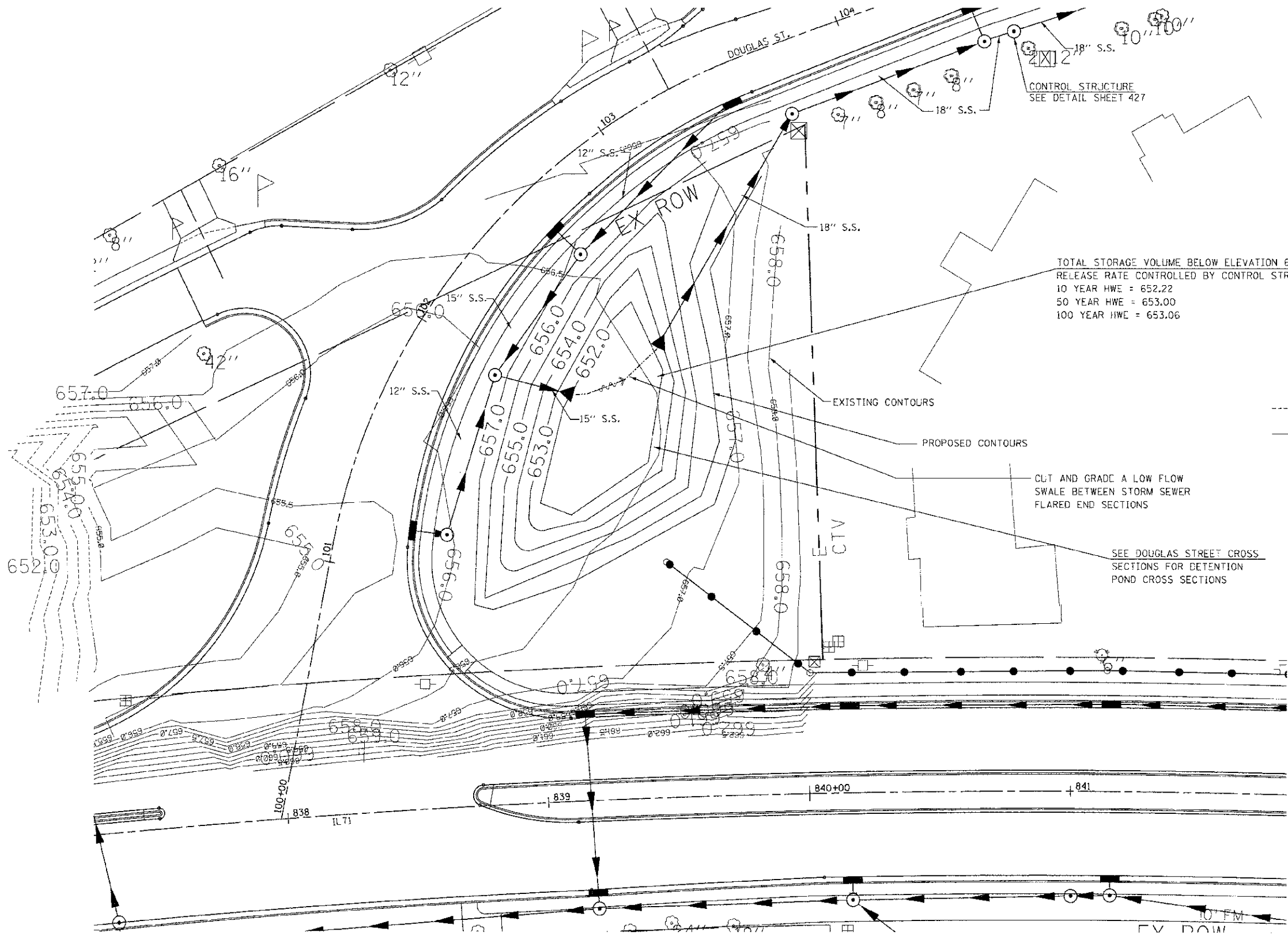


F.A.P. RTE.	SECTION	COUNTY	TOTAL SHEETS	SHEET NO.
311	0-10R	KENDALL	514	433
STA.		TO STA.		
FED. ROAD DIST. NO.		ILLINOIS FED. AID PROJECT		



TOTAL STORAGE VOLUME BELOW ELEVATION 653.0 = 0.08 AC-FT
 RELEASE RATE CONTROLLED BY CONTROL STRUCTURE AT 104+63.35 R1
 10 YEAR HWE = 652.22
 50 YEAR HWE = 653.00
 100 YEAR HWE = 653.06

LEGEND

- 658.0 ----- EXISTING CONTOUR
- 656.0 ———— PROPOSED CONTOUR

SEE DOUGLAS STREET CROSS SECTIONS FOR DETENTION POND CROSS SECTIONS

REVISIONS	
NAME	DATE

ILLINOIS DEPARTMENT OF TRANSPORTATION

DETENTION POND

SCALE: VERT. 1" = 20'
 HORIZ. 1" = 20'

DATE 7/5/2012

DRAWN BY RLH
 CHECKED BY MED

THE PROJ. # 210694
 PLOT DATE = 7/5/2012
 FILE NAME = P:\AC\11\1\DOT_DIST3\Design\Phase 1\DETENTION_POND.dwg