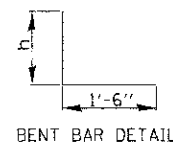
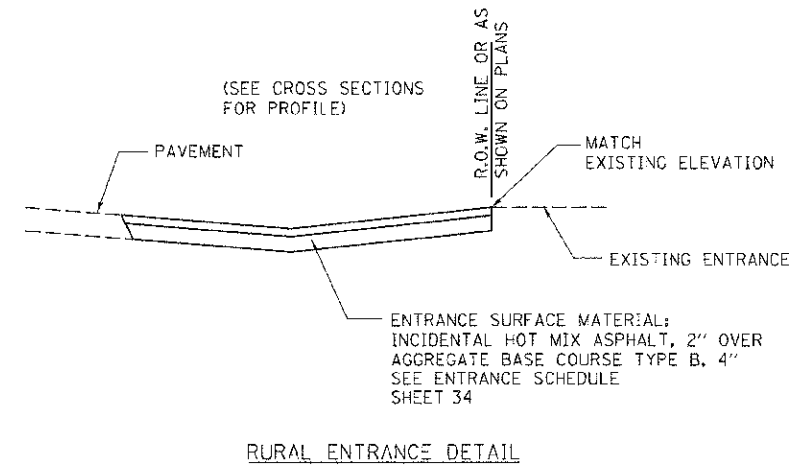
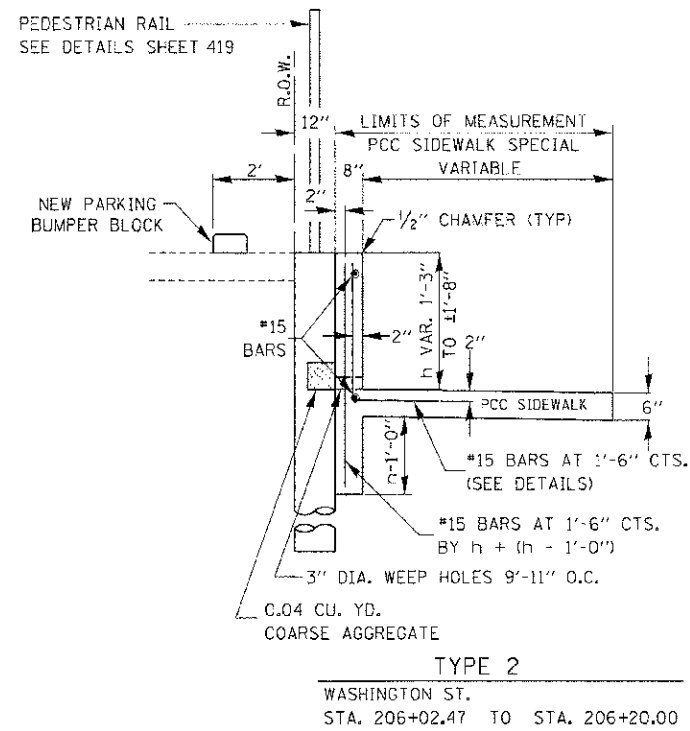
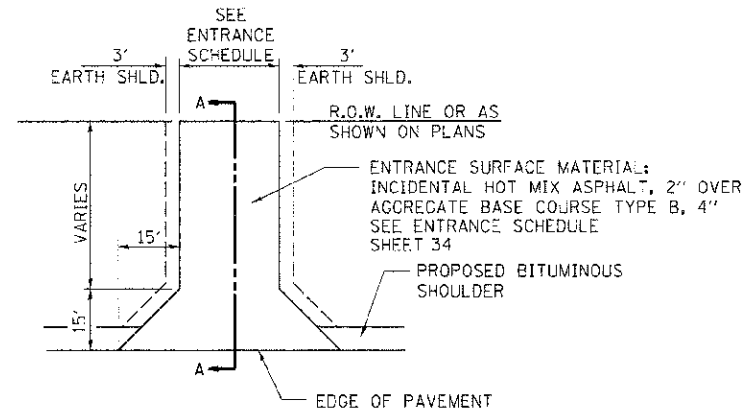
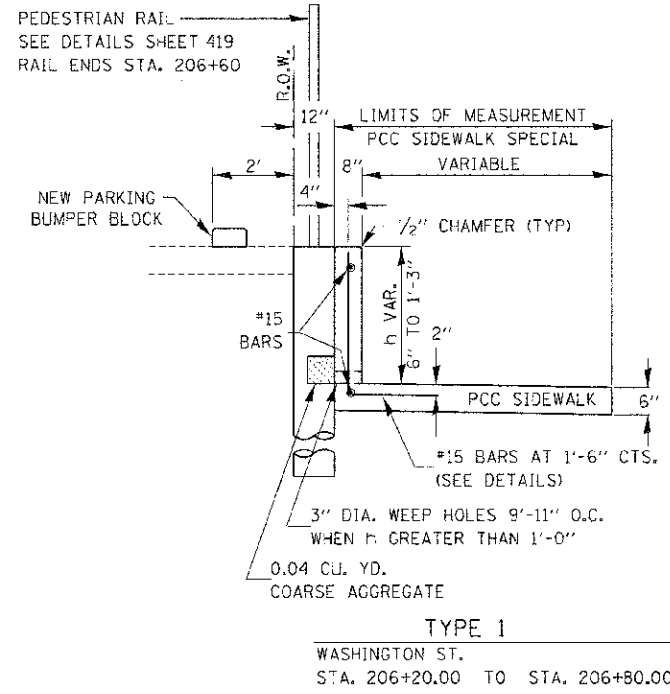


F.A.P. RTE.	SECTION	COUNTY	TOTAL SHEETS	SHEET NO.
311	(1-1)R	KENDALL	514	436
STA.	TO STA.			
FED. ROAD DIST. NO. ILLINOIS FED. AID PROJECT				



PCC SIDEWALK SPECIAL WITH RETAINING WALL

424-30
MODIFIED

REVISIONS	
NAME	DATE

ILLINOIS DEPARTMENT OF TRANSPORTATION

RURAL ENTRANCE DETAIL & PCC SIDEWALK SPECIAL WITH RETAINING WALL

SCALE: VERT. HORIZ. DATE 7/5/2012

DRAWN BY L.P. CHECKED BY MED