

F.A.P. RTE.	SECTION	COUNTY	TOTAL SHEETS	SHEET NO.
796	106 BR-1 & BR-4/BR	FORD	78	1
		ILLINOIS	CONTRACT NO. 66980	

INDEX

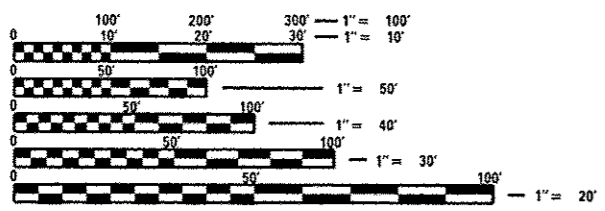
- 1 COVER SHEET
- 2 GENERAL NOTES & LOCATION
- 3-8 SUMMARY OF QUANTITIES
- 9 TYPICAL SECTIONS
- 10-12 SCHEDULES
- 13-15 PLAN AND PROFILE SHEETS SN 027-0073
- 16-18 PLAN AND PROFILE SHEETS SN 027-0072
- 19 TRAFFIC CONTROL AND PROTECTION (SPECIAL)
- 20-32 STRUCTURE REPAIR PLANS SN 027-0073
- 33-47 STRUCTURE REPAIR PLANS SN 027-0072
- 48-49 RIGHT-OF-WAY SHEETS
- 50-59 EXISTING BRIDGE PLANS-FOR INFORMATION ONLY
- 60-61 STRUCTURAL STEEL SUPPORTS-FOR INFORMATION ONLY
- 62-65 DETAILS
- 66-70 CROSS SECTIONS SHEETS SN 027-0073
- 71-78 CROSS SECTIONS SHEETS SN 027-0072

STATE OF ILLINOIS
DEPARTMENT OF TRANSPORTATION
DIVISION OF HIGHWAYS
PROPOSED
HIGHWAY PLANS

FAP ROUTE 796 (IL 115)
SECTION (106 BR-1 & BR-4)BR
PROJECT: ACBHF-0796(017)
BRIDGE SUPERSTRUCTURE REPLACEMENTS
FORD COUNTY

LIST OF ILLINOIS DOT HIGHWAY STANDARDS

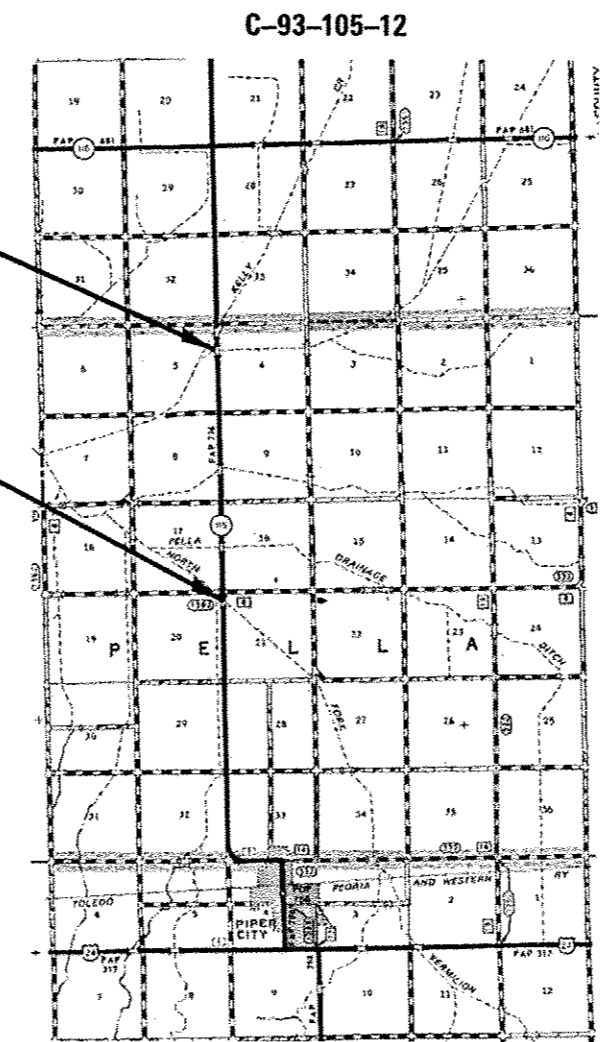
BLR 22-7	TYPICAL APP OF T.C.D. RURAL LOCAL HIGHWAY (2-LANE 2-WAY RURAL TRAF.) (ROAD CLOSED TO THRU TRAFFIC)
000001-06	STANDARD SYMBOLS, ABBREVIATIONS AND PATTERNS
001001-02	AREAS OF REINFORCEMENT BARS
001006	DECIMAL OF AN INCH AND OF A FOOT
280001-07	TEMPORARY EROSION CONTROL SYSTEMS
420401-09	BRIDGE APPROACH PAVEMENT CONNECTOR
482001-02	HMA SHOULDER ADJACENT TO FLEXIBLE PAVEMENT
515001-03	NAME PLATE FOR BRIDGES
630001-10	STEEL PLATE BEAM GUARDRAIL
630201-06	PCC/HMA STABILIZATION AT STEEL PLATE BEAM GUARDRAIL
630301-06	SHOULDER WIDENING FOR TYPE 1 (SPECIAL) GUARDRAIL TERMINALS
631031-11	TRAFFIC BARRIER TERMINAL, TYPE 6
635006-03	REFLECTOR AND TERMINAL MARKER PLACEMENT
635011-02	REFLECTOR MARKER AND MOUNTING DETAILS
701011-03	OFF-ROAD MOVING OPERATIONS 2L, 2W, DAY ONLY
701201-04	LANE CLOSURE, 2L, 2W, DAY ONLY, FOR SPEEDS 45 MPH
701901-03	TRAFFIC CONTROL DEVICES
780001-03	TYPICAL PAVEMENT MARKINGS
781001-03	TYPICAL APPLICATIONS RAISED REFLECTIVE PAVEMENT MARKERS



FULL SIZE PLANS HAVE BEEN PREPARED USING STANDARD ENGINEERING SCALES. REDUCED SIZED PLANS WILL NOT CONFORM TO STANDARD SCALES. IN MAKING MEASUREMENTS ON REDUCED PLANS, THE ABOVE SCALES MAY BE USED.

J.U.L.I.E.
 JOINT UTILITY LOCATION INFORMATION FOR EXCAVATION
 1-800-892-0123
 OR 811

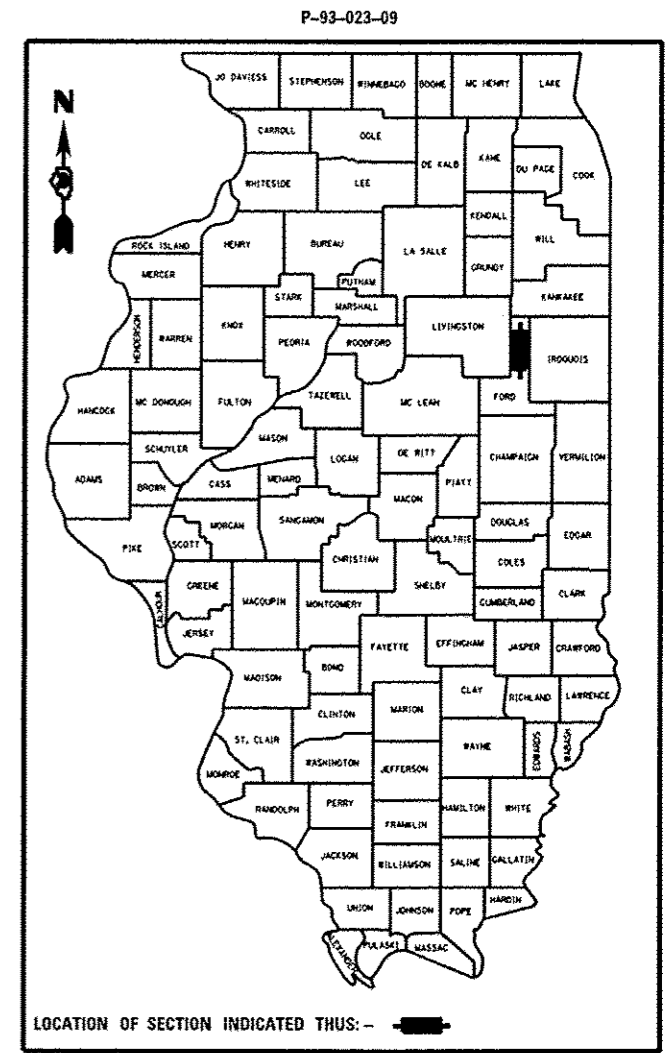
PROJECT ENGINEER: JOE KANNEL
PROJECT MANAGER: PAT BRABOY
 DISTRICT 3 NO. (815) 434-6131
 CONTRACT NO. 66980



SN 027-0073
 STA 1590 + 50 TO
 STA 1597 + 95

SN 027-0072
 STA 1738 + 25 TO
 STA 1745 + 00

SN 027-0072 GROSS LENGTH = NET LENGTH = 0.13 MILE
 SN 027-0073 GROSS LENGTH = NET LENGTH = 0.14 MILE
 PROJECT TOTAL GROSS LENGTH = NET LENGTH = 0.27 MILE



LOCATION OF SECTION INDICATED THUS: - [black rectangle] -

FUNCTIONAL CLASSIFICATION-
MINOR ARTERIAL (RURAL)
 2009 ADT = 550 VPD
 PV = 81.82% SU = 7.27% MU = 10.91%

STATE OF ILLINOIS
 DEPARTMENT OF TRANSPORTATION
 DIVISION OF HIGHWAYS

SUBMITTED *Paul A. Tompkins* 20 12
 DEPUTY DIRECTOR OF HIGHWAYS, REGION ENGINEER

John D. Baromyelli P.E. 20 12
 acting ENGINEER OF DESIGN AND ENVIRONMENT

William R. Freiler 20 12
 acting DIRECTOR OF HIGHWAYS, CHIEF ENGINEER

PRINTED BY THE AUTHORITY
OF THE STATE OF ILLINOIS