

**PLAN NOTES:**

1. SIGNS ON THE POST NEED TO BE POSITIONED FROM TOP TO BOTTOM AS "DETOUR" SIGN OVER "CARDINAL DIRECTION" OVER "ROUTE MARKER" OVER "DIRECTIONAL ARROW".
2. • TO BE PLACED WITH INTERSTATE EXIT SIGNS AT 1/2 MILE AND 1 MILE EXIT SIGNS RESPECTIVELY
3. •• 1 SIGN ASSEMBLY OF EACH TYPE NEEDED IN EACH DIRECTION TO BE PLACED ADJACENT TO EXISTING INTERSTATE I-57 ROUTE MARKERS
4. ••• REFER TO STANDARD B.L.R. 22-7 FOR FURTHER CLARIFICATION OF SIGNAGE PLACEMENT.
5. •••• EACH SIGN ASSEMBLY TYPE TO BE PLACED ADJACENT TO EXISTING US 24 & IL 116 ROUTE SIGNS

PROJECT LOCATION  
SN 027-0073

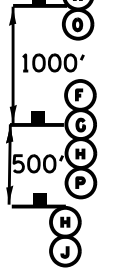
SEE INSET SHEET NO. 62

PROJECT LOCATION  
SN 027-0072

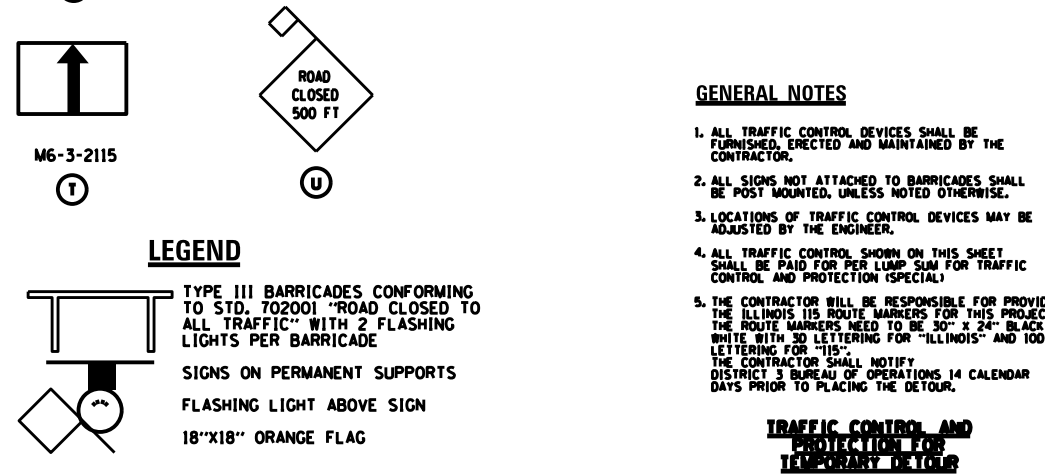
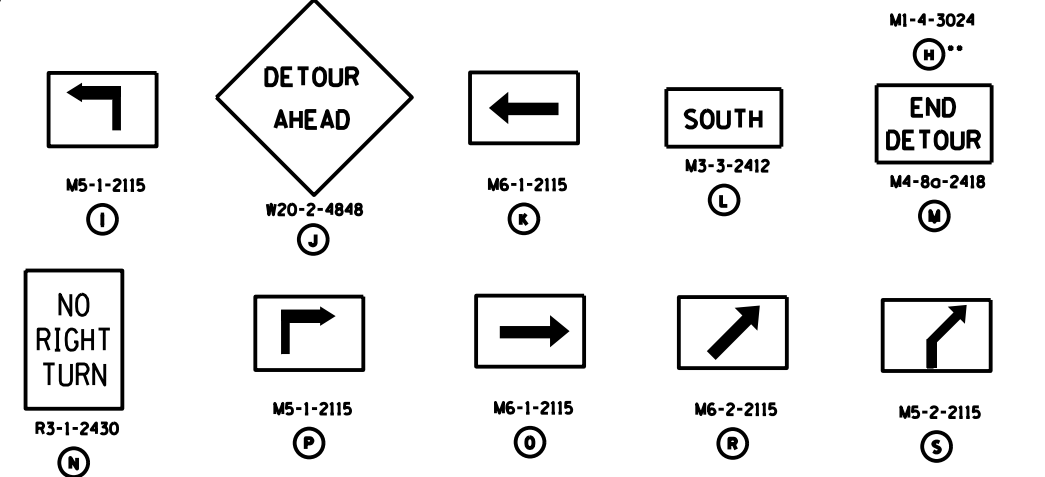
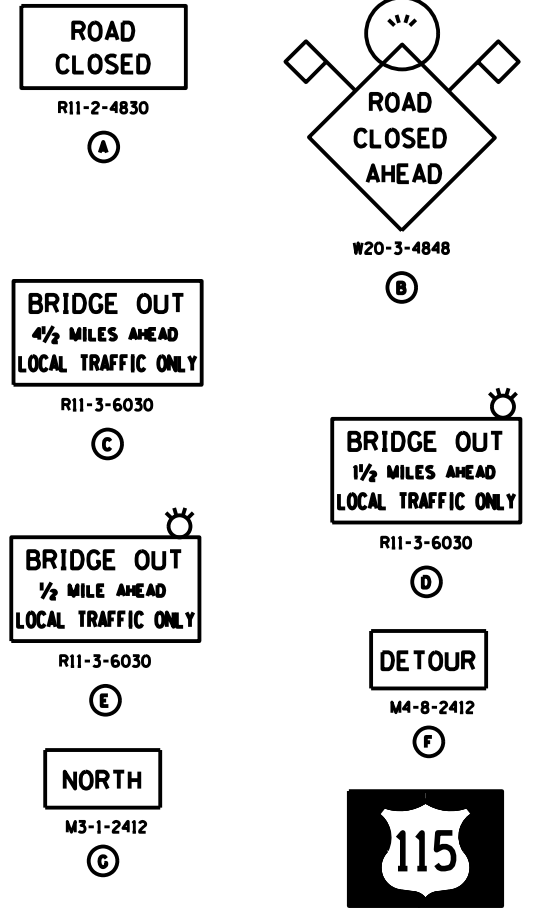
US 115

US 24

US 24



**TRAFFIC CONTROL PROTECTION**  
NO SCALE



**GENERAL NOTES**

1. ALL TRAFFIC CONTROL DEVICES SHALL BE FURNISHED, ERECTED AND MAINTAINED BY THE CONTRACTOR.
2. ALL SIGNS NOT ATTACHED TO BARRICADES SHALL BE POST MOUNTED, UNLESS NOTED OTHERWISE.
3. LOCATIONS OF TRAFFIC CONTROL DEVICES MAY BE ADJUSTED BY THE ENGINEER.
4. ALL TRAFFIC CONTROL SHOWN ON THIS SHEET SHALL BE PAID FOR PER LUMP SUM FOR TRAFFIC CONTROL AND PROTECTION (SPECIAL)
5. THE CONTRACTOR WILL BE RESPONSIBLE FOR PROVIDING THE ILLINOIS 115 ROUTE MARKERS FOR THIS PROJECT. THE ROUTE MARKERS NEED TO BE 30" X 24" BLACK ON WHITE WITH 30 LETTERING FOR "ILLINOIS" AND 100 LETTERING FOR "115". THE CONTRACTOR SHALL NOTIFY DISTRICT 3 BUREAU OF OPERATIONS 14 CALENDAR DAYS PRIOR TO PLACING THE DETOUR.

**TRAFFIC CONTROL AND PROTECTION FOR TEMPORARY DETOUR**

FILE NAME =	USER NAME = *USERS*	DESIGNED -	REVISED -	STATE OF ILLINOIS DEPARTMENT OF TRANSPORTATION	TRAFFIC CONTROL AND PROTECTION (SPECIAL)	F.A.P. RTE.	SECTION	COUNTY	TOTAL SHEETS	SHEET NO.	
*FILEL*		DRAWN -	REVISED -			796	1106 BR-1 & BR-418R	FORD	78	19	
Default		CHECKED -	REVISED -			CONTRACT NO. 66980					
		DATE -	REVISED -			ILLINOIS FED. AID PROJECT					