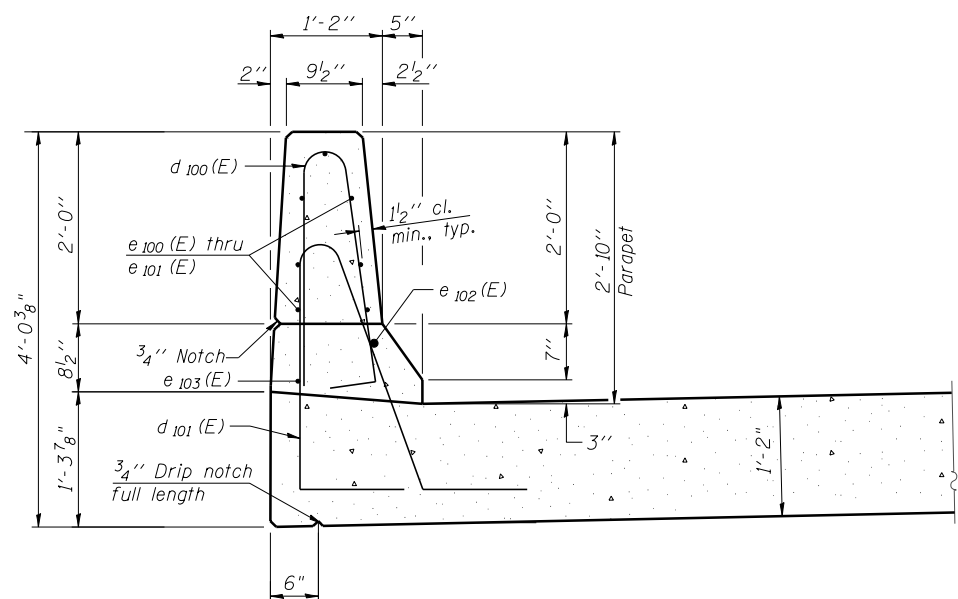


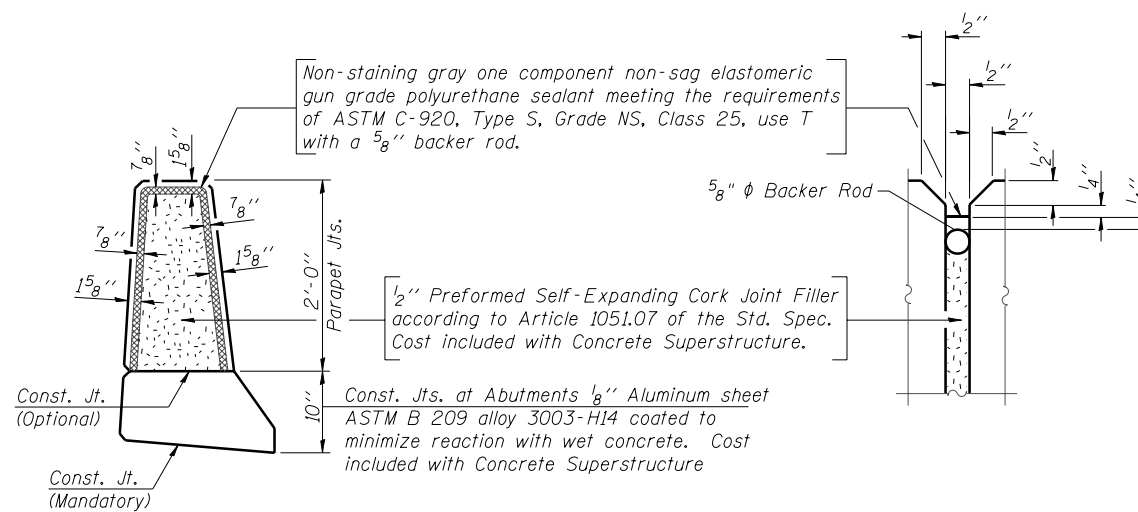
INSIDE ELEVATION OF PARAPET
 (East Parapet Shown, West Parapet Similar, Opposite Hand)

MINIMUM BAR LAP

(Parapet)
 #4 bar = 2'-0"
 #8 bar = 5'-2"



SECTION THRU PARAPET



PARAPET JOINT DETAILS

Note:

Bars indicated thus: 1x3-#4 etc. indicates 1 line of bars with 3 lengths per line.

FILE NAME = ...665980-SN0270073-007-SupDe1.dgn



Zroka Engineering, P.C.
 4216 North Hermitage
 Chicago, IL 60613

USER NAME = SAW	DESIGNED - PM	REVISED -
	CHECKED - JLA	REVISED -
PLOT SCALE = 0:2.0000 '1' / IN.	DRAWN - SAW	REVISED -
PLOT DATE = 10/30/2012	CHECKED - PM	REVISED -

STATE OF ILLINOIS
DEPARTMENT OF TRANSPORTATION

SUPERSTRUCTURE DETAILS
S.N. 027-0073

SHEET NO. SB-07 OF SB-13 SHEETS

F.A.P. RTE.	SECTION	COUNTY	TOTAL SHEETS	SHEET NO.
796	(106 BR-1 & BR-4)BR	FORD	78	26
				CONTRACT NO. 66980
ILLINOIS FED. AID PROJECT				