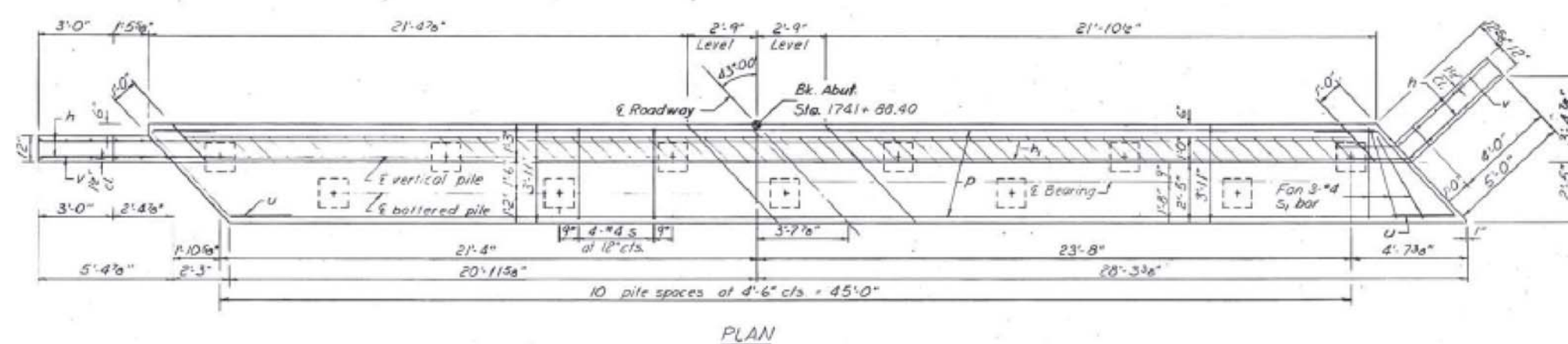
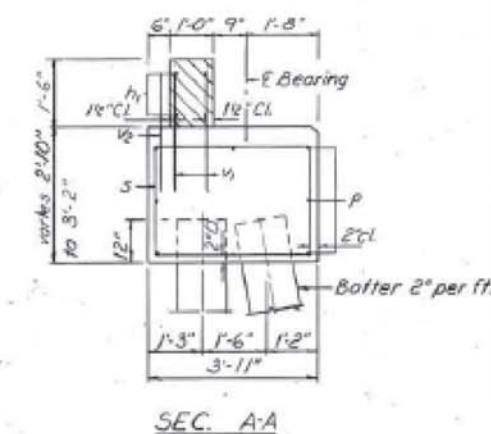
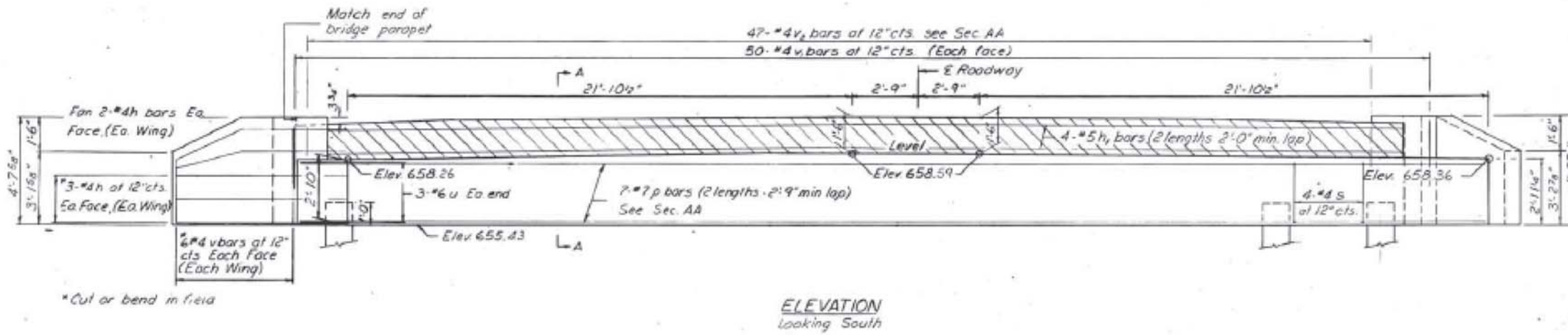


STATE OF ILLINOIS
DEPARTMENT OF TRANSPORTATION

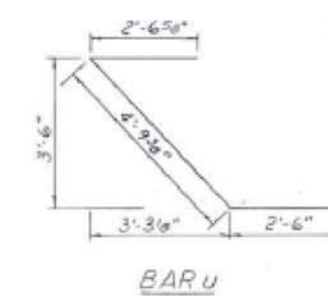
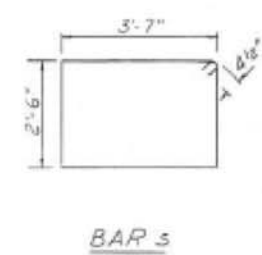
PROJECT NO.	SECTION	COUNTY	TOTAL SHEETS	SHEET NO.	SHEET NO.
796	106 BR-4	FORD	37	37	8
SHEETS 10					



BILL OF MATERIAL

Bar	No.	Size	Length	Shape
h	20	#4	7'-6"	—
h ₁	8	#5	25'-2"	—
p	14	#7	25'-9"	—
s	40	#4	12'-11"	□
s ₁	3	#4	9'-8"	□
u	6	#6	9'-10"	◁
v	24	#4	4'-5"	—
v ₁	100	#4	2'-10"	—
v ₂	47	#5	2'-10"	—
Class X Concrete Cu Yd				22.9
Reinforcement Bars Pound				1900
Concrete Piles Lin.Ft.				198

PILE DATA
Type: Concrete
Capacity: Drive to 25 Ton bearing
Est. Length: 18'
No. Req'd: 11



FOR INFORMATION ONLY

DESIGNED	D.A.S.
CHECKED	
DRAWN	E.A.S.
CHECKED	

SOUTH ABUTMENT
FA Route 796 over the North Fork Vermilion River
FA Route 796 Sec. 106 BR-4
Ford County
Sta. 1741+35