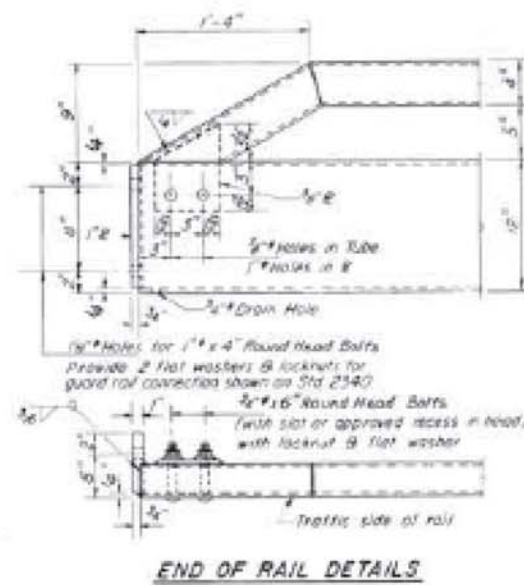
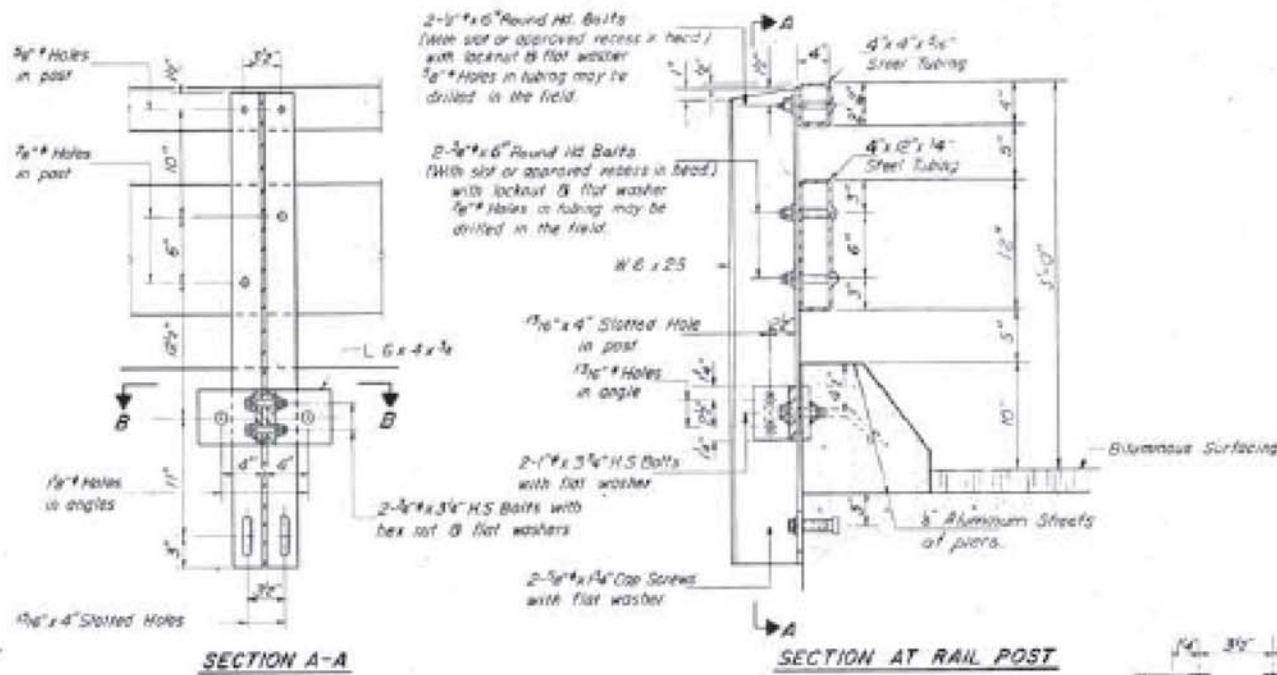
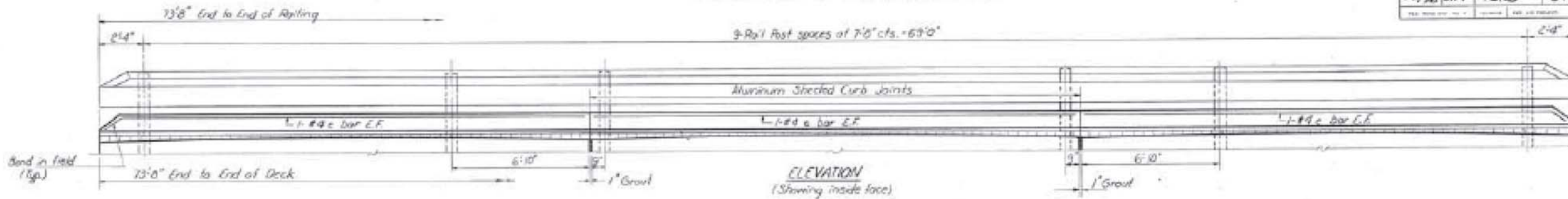


STATE OF ILLINOIS
DEPARTMENT OF TRANSPORTATION

PROJECT NO.	796 BR-1	SECTION	106 BR-1	SHEET NO.	3
				TOTAL SHEETS	6 SHEETS



NOTES

Galvanized structural steel tubing shall conform to the requirements of ASTM designation A-500 Grade B Structural Steel Tubing.

All other steel shapes and plates shall conform to the requirements of AASHTO M-163 except posts and angles shall conform to AASHTO M-223, Gr. 50. Bolts, cap screws, and nuts shall conform to the requirements of ASTM designation A-307 except for high strength bolts, nuts and washers noted which shall conform to AASHTO M-164.

All bolts, nuts, cap screws, washers and lock washers shall be galvanized in accordance with AASHTO M-252.

All posts, railing, rail splices, anchor devices and angles shall be galvanized after shop fabrication in accordance with AASHTO M-164 and ASTM A-365.

Galvanized rail shall not be painted.

Railings shall be in accordance with Section 508 of the Standard Specifications, except as noted, and shall be paid for at the contract unit price per linear foot for STEEL RAILING, TYPE T-1.

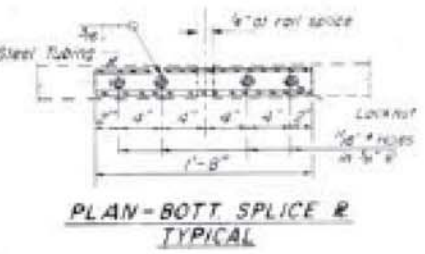
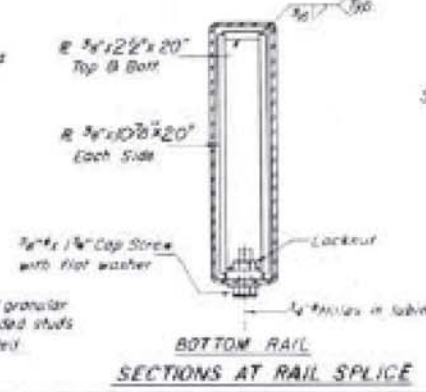
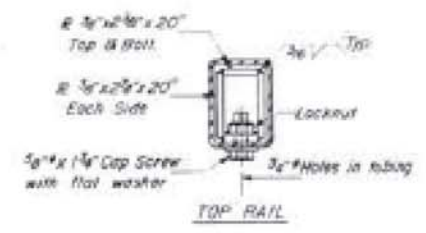
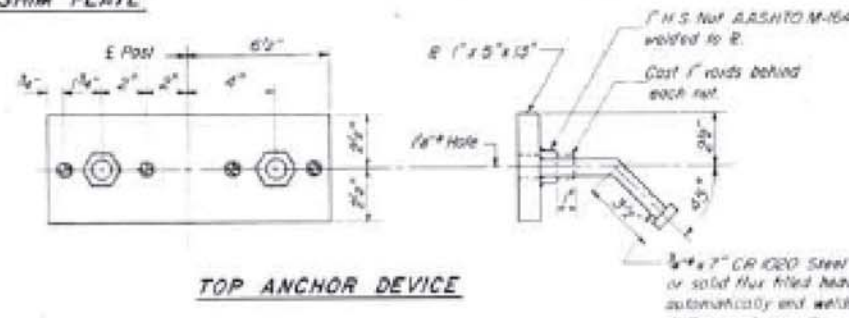
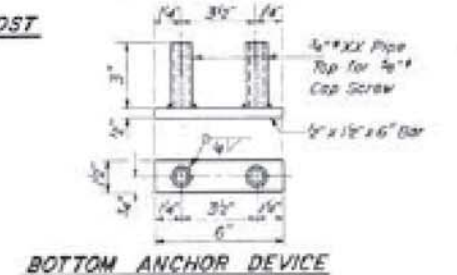
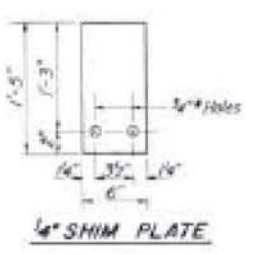
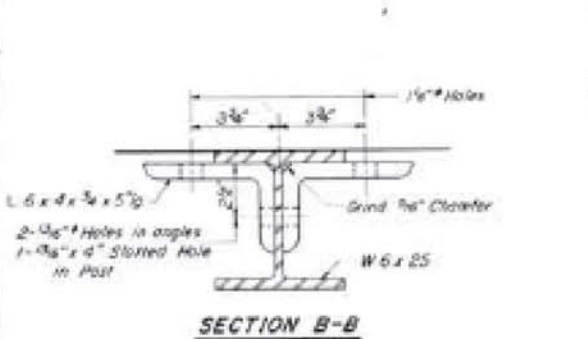
All field drilled holes shall be coated with an approved zinc rich paint before erection.

The lower portion of the post flange in contact with concrete shall receive two coats of asphalt paint conforming to Section 714.08 Type B or place 1/2" fabric bearing pad between the post and concrete.

The 1/2" high strength bolts used to connect the 6 x 4 x 1/2 angles to the post shall be tightened in accordance with Article 507.04(1)(3) of the Standard Specifications. The 1/2" high strength bolts connecting the angles to the concrete shall be tightened to a snug fit and given an additional 1/2 turn. The 1/2" cap screws in bottom of posts shall be tightened to a snug fit only.

For multi-span bridges, sufficient 1/2" x 6" x 1/2" galvanized steel shims shall be provided to align rail between adjacent spans. Gal incidental to Steel Railing.

FOR INFORMATION ONLY



**CURB & RAIL
BILL OF MATERIAL**

Bar	No.	Size	Length	Shape
e	12	#4	24'-3"	
Reinforcement Bars			Lbs.	190
Class X Concrete			Cu Yds.	4.5
Steel Railing, Type T-1			Lin Ft.	147

**TYPE T-1
STEEL RAILING
EA RT 796 SEC. 106 BR-1
FORD COUNTY
STA. 1594+0280**

DESIGNED	THOMAS BRUNN	EXAMINED	[Signature]
CHECKED	DAN KAULL	PASSED	[Signature]
DRAWN	R. Daly	APPROVED	[Signature]
CHECKED	D. K.	DIRECTOR	[Signature]

R-26A B-30-80 (11'-0" Maximum Post Spacing)